

## Specification Guide

# Moduleflex eFurnace™



Contents	Page
Features .....	2
Physical Data.....	2
Blower Performance .....	2
Dimensions.....	3
Wiring Diagram.....	3
Thermostat Connections .....	4

## Product Nomenclature

	A E F E 3 A 00 S 1 H H 1				
<b>Series</b> AEF = ADP Moduleflex eFurnace					<b>Revision</b>
<b>Blower Motor</b> E = 5-speed ECM motor					<b>Front Panel Color</b> H = Galvanized A = Armstrong G = ICP J = Goodman/Amana N = Nordyne P = Carrier/Bryant/Payne R = Rheem/Ruud T = Trane/American Std. Y = York/Luxaire/Coleman
<b>Size / Airflow</b> 3 = 3 Ton / 600-1200 CFM 4 = 4 Ton / 1000-1600 CFM 5 = 5 Ton / 1400-2000 CFM					<b>Cabinet Color</b> H = Galvanized
<b>Cabinet Width</b> A = 14.25" B = 17.5" C = 21.0" D = 24.5"					
<b>Electric Heat</b> 00 = No heat					<b>Voltage</b> 1 = 120 V, 60 Hz, 1 ph., with time delay
<b>Line Voltage Connection</b> S = Stripped Wires					



Product improvement is a continuous process at Advanced Distributor Products. Therefore, product specifications are subject to change without notice and without obligation on our part. Please contact your ADP representative or distributor to verify details.

© 2023 by Advanced Distributor Products. All rights reserved.

## Application Features

- True replacement for an existing gas furnace
- Multi-position - upflow, downflow, and horizontal left or right airflow
- Industry standard A,B,C, and D cabinet widths
- Compact design for tight spaces - only 30" tall
- 120 Volt to use existing service in a gas furnace replacement
- Perfectly matches ADP multi-position, downflow, and horizontal cased coils.
- Bottom and side return capable (both sides)
- Painted front panel available to match coil color

## Electrical Features

- 120V 60Hz, 1 Phase, 5-speed high-efficiency ECM motor
- Terminal board with screw down connections for thermostat wiring
- Fan time delay built-in (1 second on, 45 seconds off)
- Line voltage and thermostat connections can be made on left or right side of cabinet

## Cabinet Features

- Blower panel with handle and only six (6) screws for easier access
- Cabinet constructed of heavy gauge galvanized steel
- Cabinet lined with high quality 5/8" foil faced insulation
- Slide-out blower assemblies for easy access to blower motor
- Certified to 1.4% or less cabinet air leakage as per ASHRAE 193-210
- Dynamically balanced blowers for quiet, vibration-free operation

Physical Data	Model				
	AEFE3A*	AEFE4B*	AEFE5C*	AEFE5D*	
Nominal CFM Range	400 - 1200	800 - 1600	1000 - 1800	1200 - 2000	
Available Voltage	120 V, 60 Hz, 1 ph.				
Transformer Size & Type	40 VA, Class 2				
Blower Wheel (dia." x width")	10 X 6	10 X 8	10 X 10	10 X 10	
Blower Electrical Data	Motor H. P.	1/2	3/4	1	1
	F. L. A. @ 120 V	5.8	8.7	11.1	11.1
	MCA	7.3	10.9	13.9	13.9
	Circuit Breaker Amps	15	15	15	15
Approximate Weight (lbs)	80	88	92	101	
Approximate Packaged Weight (lbs)	84	93	98	107	

## Blower Performance

Unit Size	Tap	Airflow (CFM) vs. External Static Pressure (inches W.C.)					
		0.1	0.2	0.3	0.4	0.5	0.6
AEFE3A*	1	632	589	542	502	453	386
	2	791	751	723	685	647	608
	3	968	940	906	882	852	820
	4+	1081	1050	1018	994	967	943
	5*	1237	1209	1187	1159	1133	1114
AEFE4B*	1	1037	996	949	904	859	812
	2	1240	1198	1156	1119	1078	1039
	3	1404	1368	1333	1295	1263	1226
	4+	1584	1551	1520	1493	1461	1427
	5*	1689	1661	1631	1599	1568	1543
AEFE5C*	1	1389	1332	1276	1218	1165	1104
	2	1567	1516	1462	1415	1360	1305
	3	1950	1906	1866	1839	1795	1749
	4+	1756	1703	1652	1604	1556	1504
	5*	2090	2043	2000	1957	1914	1868
AEFE5D*	1	1401	1346	1286	1221	1164	1104
	2	1585	1532	1483	1437	1378	1318
	3	1969	1927	1883	1858	1816	1771
	4+	1798	1751	1706	1663	1616	1564
	5*	2123	2078	2033	1991	1949	1908

### Notes :

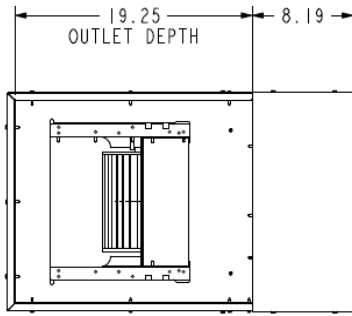
1. All data is given while air handler is operating with a dry DX coil.
2. Speed tap 3 is factory set cooling speed.
3. Speed taps marked with an asterisk (\*) denote highest cooling speeds.
4. Speed taps marked with a plus sign (+) denote highest heating speed.

### Approved field installed duct heaters

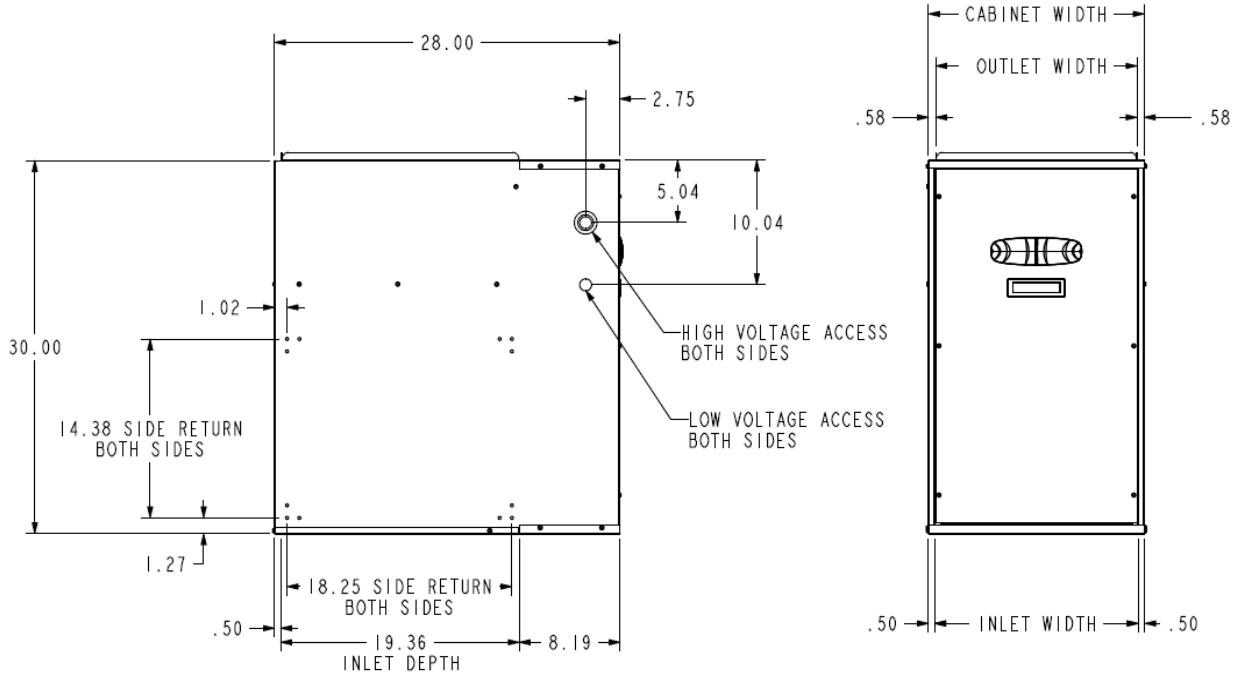
Note: Follow heat kit manufacturer's installation instructions

Model	Heat Kit Part No.
AEFE3A*	Warren - SL10A
AEFE4B*	Warren - SL15A
AEFE5C*	Warren - SL20A
AEFE5D*	Warren - SL20A

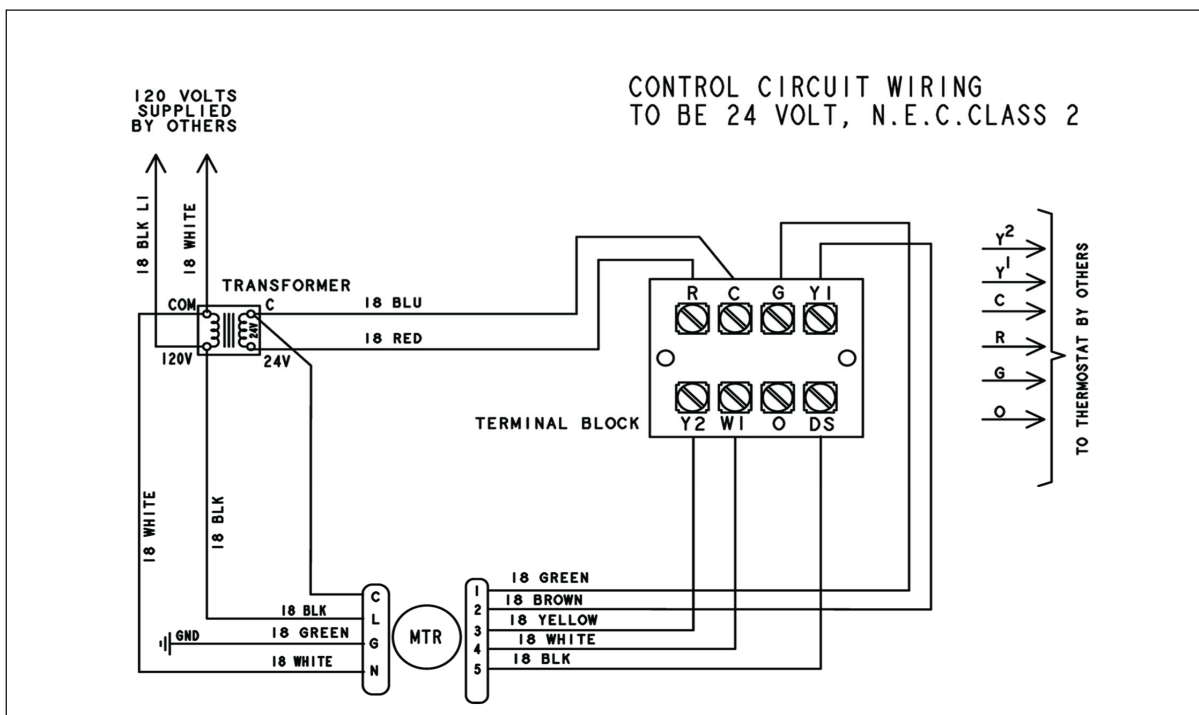
# Dimensions



MODEL	CABINET WIDTH	INLET WIDTH	OUTLET WIDTH
AEF3A*	14.25"	13.25"	13.09"
AEF4B*	17.50"	16.50"	16.34"
AEF5C*	21.00"	20.00"	19.84"
AEF5D*	24.50"	23.50"	23.34"



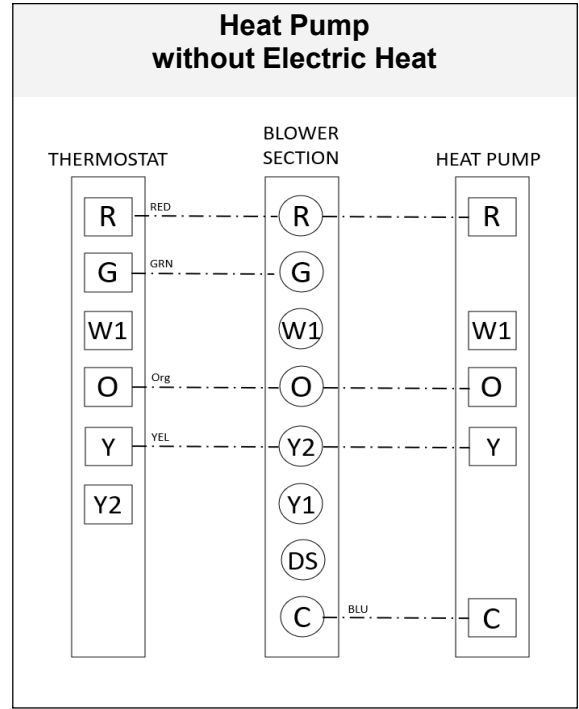
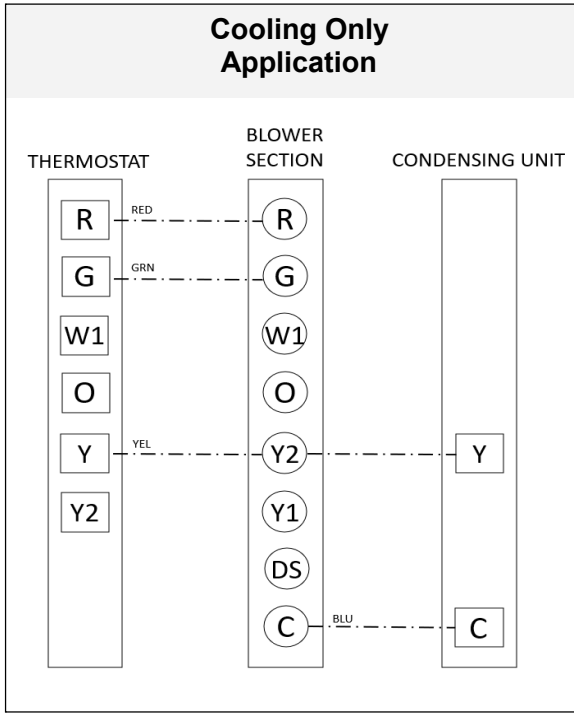
# Wiring Diagram



# Thermostat Connections

## Typical 1– Stage Thermostat Connections

Maximum allowable current draw from power-stealing thermostats or other accessories is 18 mA. Exceeding this value may cause the blower section control board to operate abnormally.



## Typical 2– Stage Thermostat Connections

Maximum allowable current draw from power-stealing thermostats or other accessories is 18 mA. Exceeding this value may cause the blower section control board to operate abnormally.

