

SIL-FOS® 15 (SILVALOY® 15, SILVALOY® 15 EXCEL)

NOMINAL COMPOSITION

Silver	15.0% ± 0.5%
Copper	80.0% ± 1.0%
Phosphorus	5.0% ± 0.2%
Other Elements (Total)	0.15% Max

PHYSICAL PROPERTIES

Color	Gray
Melting Point (Solidus)	1190°F (643°C)
Flow Point ⁽¹⁾	1300°F (705°C)
Brazing Temperature Range	1300 °F - 1500 °F (705 °C - 815 °C)
Specific Gravity	8.38
Density(lbs/in ³)	0.303
Electrical Conductivity (%IACS) ⁽²⁾	9.90
Electrical Resistivity (Microhm-cm)	17.4

⁽¹⁾ The true liquidus for Sil-Fos 15 is 1475°F (802°C). The alloy will flow freely and make strong joints at 1300°F (705°C).

⁽²⁾ IACS = International Annealed Copper Standard

PRODUCT USES

Sil-Fos 15 was developed primarily for use on copper, but its use has extended to other nonferrous copper base alloys. It is used extensively on refrigeration units, air conditioning apparatus, electrical conductors, copper and brass pipe fittings, and other copper and brass equipment.

BRAZING CHARACTERISTICS

Sil-Fos 15 is a copper rich, filler metal that is self-fluxing on copper by virtue of its phosphorus content. The self-fluxing property of this filler metals is effective on copper only. With copper-base alloys, such as brass or bronze, the joints should be fluxed with Handy Flux®. Sil-Fos 15 should not be used on nickel-base and iron-base alloys, as the phosphorus reacts with the nickel or iron to form brittle compounds at the interface of the joints.

Sil-Fos 15 has a strong tendency to liquate (i.e. to separate into low and high melting constituents) if heated slowly through its melting range, as normally occurs in furnace brazing. The results in leaving a "skull" of unmelted alloy behind may be objectionable from the standpoint of appearance. In furnace brazing it is preferable to pre-place the alloys inside the joint where the skull is not visible.

PROPERTIES OF BRAZED JOINTS

The properties of a brazed joint are dependent upon numerous factors including base metal properties, joint design, metallurgical interaction between the base metal and the filler metal. The following information, however, should serve as a guide for estimating the results that can be achieved with either Sil-Fos 15 or Sil-Fos 5 on copper and copper base alloys.

Table 1. Brazed butt joints tested at room temperature

	<u>Tensile Strength</u> (lbs/in ²)	<u>Elongation % in</u> <u>2 in.</u>
Copper	30,000 - 35,000	15.0 - 20.0
Brass	35,000 - 40,000	20.0 - 25.0
Nickel-Silver	35,000 - 40,000	2.00 - 5.00

Table 2. Brazed butt joints tested at elevated temperatures gave the following average values (short time tests)

	<u>Test Temperature</u>		<u>Tensile Strength</u>	<u>Elongation % in</u>
	°F	°C	(lbs/in ²)	<u>2 in.</u>
Copper	200	95	32,050	32.8
	300	150	29,500	31.2
	400	205	28,100	28.1
	500	260	23,600	24.5
	600	315	22,700	24.2
	700	370	17,700	12.5
Brass	800	425	15,800	9.40
	200	95	34,000	19.2
	300	150	34,700	28.1
	400	205	30,700	28.1
	500	260	28,500	19.2
	600	315	22,500	13.0
	700	370	16,700	6.80
	800	425	11,600	2.90

Prolonged heating should be avoided due to the erosion of Sil-Fos into the base metal. Small clearances should also be avoided. Excessive heat times at brazing temperature and small clearances can lead to the erosion seen in the picture below:

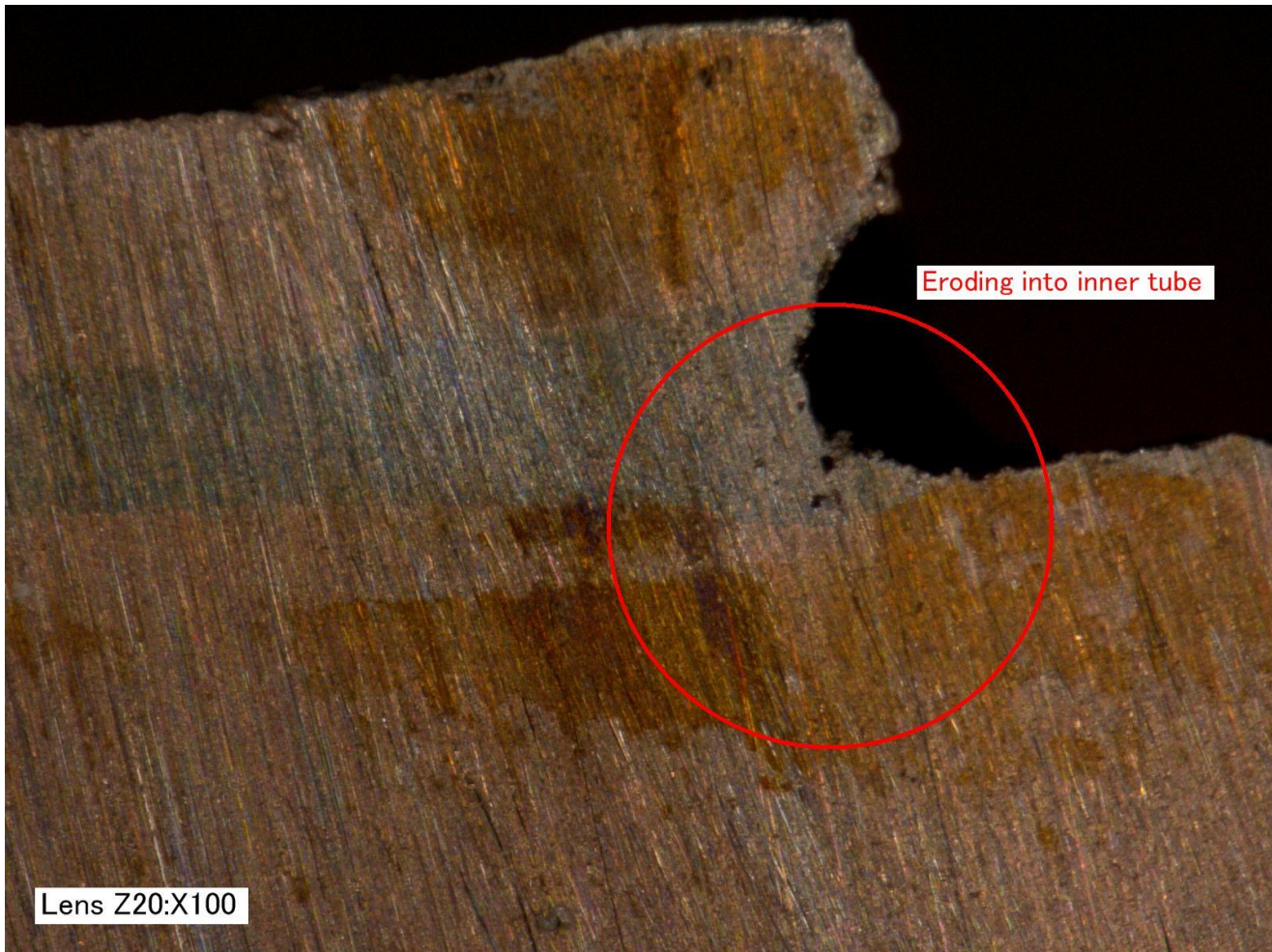


Figure 1: Erosion of Sil-Fos into Copper base metal

CORROSION RESISTANCE

Normally the corrosion resistance of Sil-Fos 15 is of the same order as copper, but under certain conditions it may corrode more rapidly. Sil-Fos 15 should not be used where the joints are exposed to sulfur compounds, especially in gasses or oils at temperatures above normal room temperature. As the corrosion by sulfur is cumulative, even very small percentages will eventually cause failure of the joint by disintegration. Exposure to pressured steam can also result in accelerated corrosion.

CORROSION RESISTANCE (CONT.)

The following table lists the results of corrosion tests on brazed copper joints in several media:

Solution	Test Temp.	Conditions	Loss in Weight Mgs./Day
10% Acetic Acid	Room	Constant Immersion	33.3
10% Acetic Acid	212°F (100°C)	Constant Immersion	243.0
5% Hydrochloric Acid	Room	Constant Immersion	50.6
5% Hydrochloric Acid	212°F (100°C)	Constant Immersion	395.0
5% Lactic Acid	Room	Alternate Immersion 22 times per minute	48.4
5% Lactic Acid	130°F (55°C)	Alternate Immersion 22 times per minute	381.0
Sodium Chloride (N/10)	Room	Constant Immersion	9.1
Sodium Chloride (N/10)	212°F (100°C)	Constant Immersion	143.0
5% Sulphuric Acid	Room	Constant Immersion	36.3
5% Sulphuric Acid	212°F (100°C)	Constant Immersion	178.0

AVAILABLE FORMS

Wire, strip, engineered preforms, specialty preforms per customer specification, powder and paste.

SPECIFICATIONS

Sil-Fos 15 alloy conforms to the following specifications:

- American Welding Society (AWS) A5.8/A5.8M BCuP-5
- ASME Boiler & Pressure Vessel Code, Sec II-C, SFA-5.8 BCuP-5
- Federal Specification QQ-B-654 BCuP-5 Grade III
- International Organization for Standardization (ISO) 17672 CuP 284
- British Standard (BS) EN 1044 CP 102
- Deutsches Institut für Normung (DIN) 8513 Part 2 L-Ag15P

APPLICABLE PRODUCT CODE(S)

The applicable Lucas-Milhaupt product code(s) for this technical data sheet: A00000026, Legacy Codes: 71-150, 7153, 29538, 35528.

Distribution P/N: 95150, 95161, 95168, 95177, 95166, 95162, 95151, 95152, 95154, 95158, 98700, 98701, 98702, 98703, 98704, 98705, 98706, 99710, 95090.

SAFETY INFORMATION

The operation and maintenance of brazing equipment or facility should conform to the provisions of American National Standard (ANSI) Z49.1, "Safety in Welding and Cutting". For more complete information refer to the Material Safety Data Sheet for Sil-Fos 15.

WARRANTY CLAUSE

Lucas-Milhaupt, Inc. believes the information contained herein to be reliable. However, the information is given by Lucas-Milhaupt, Inc. without charge and the user shall use such information at its own discretion and risk. This information is provided on an "AS IS" AND "AS AVAILABLE" basis and Lucas-Milhaupt, Inc. specifically disclaims warranties of any kind, either express or implied, including, but not limited to, warranties of title or implied warranties of merchantability or fitness for a particular purpose. No oral advice or written or electronically delivered information given by Lucas-Milhaupt, Inc. or any of its officers, directors, employees, or agents shall create any warranty. Lucas-Milhaupt, Inc. assumes no responsibility for results obtained or damages incurred from the use of such information in whole or in part.