

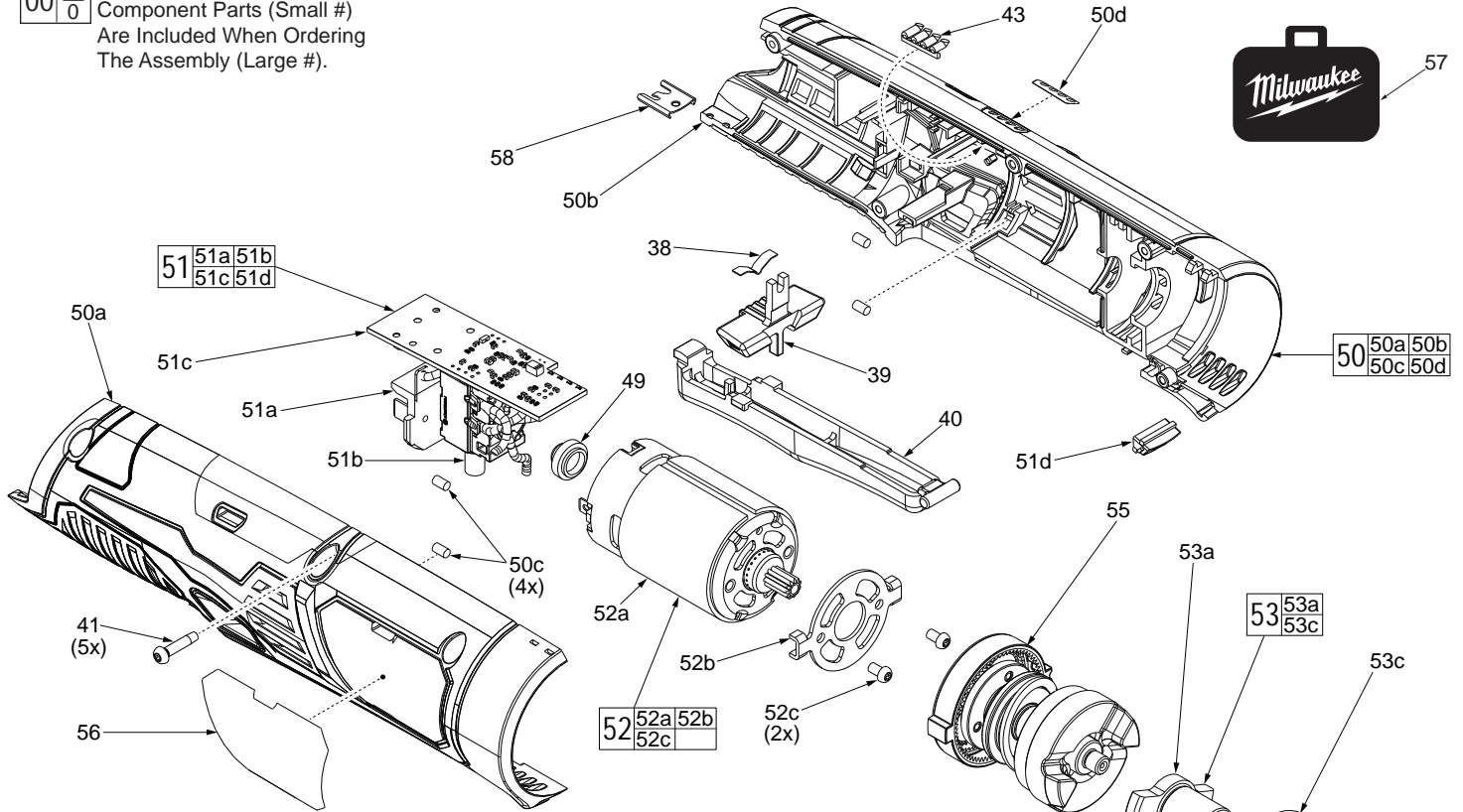


SERVICE PARTS LIST

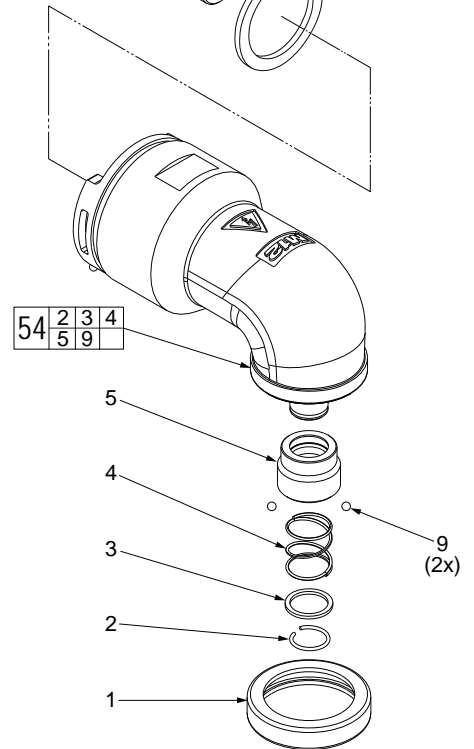
BULLETIN NO.
54-26-2060

| | | | |
|--|----------------|---|-------------|
| SPECIFY CATALOG NO. AND SERIAL NO. WHEN ORDERING PARTS | | REVISED BULLETIN | DATE |
| M12™ Right Angle 1/4" Hex Impact Driver | | | July 2015 |
| CATALOG NO. | 2467-20 | STARTING SERIAL NO. | G53A |
| | | WIRING INSTRUCTION See Page 2 | |

EXAMPLE:
Component Parts (Small #)
Are Included When Ordering
The Assembly (Large #).

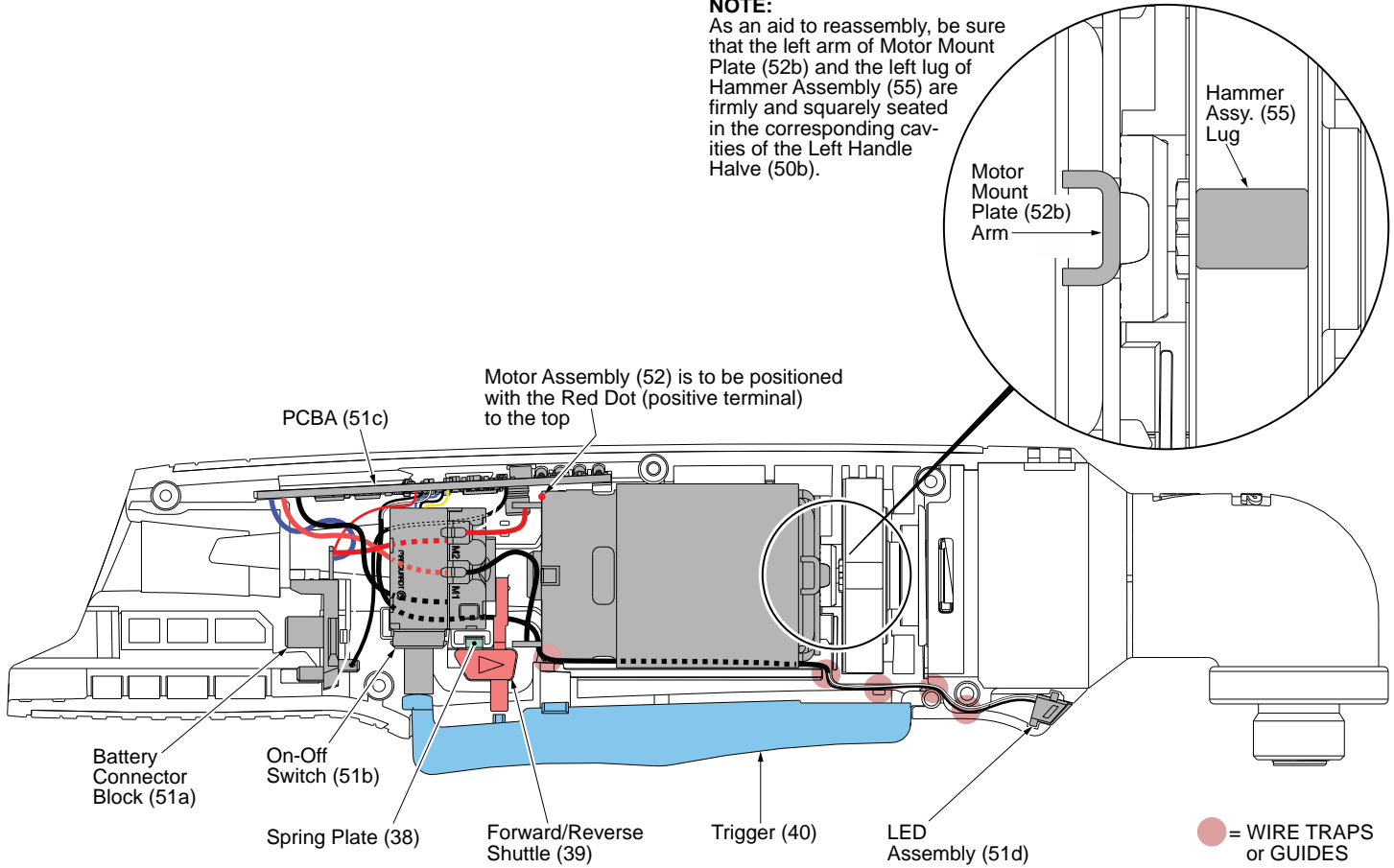


| FIG. | PART NO. | DESCRIPTION OF PART | NO. REQ. |
|------|------------|--------------------------------------|----------|
| 1 | 42-38-0500 | Rubber Bumper Ring | 1 |
| 2 | 44-90-0650 | Retaining Ring | 1 |
| 3 | 45-88-0428 | Washer | 1 |
| 4 | 40-50-0297 | Spring | 1 |
| 5 | 45-22-0880 | Sleeve | 1 |
| 9 | 02-02-7045 | 2.5mm Steel Ball | 2 |
| 38 | 40-50-0027 | Spring Plate | 1 |
| 39 | 42-42-0084 | Forward / Reverse Shuttle | 1 |
| 40 | 31-92-0316 | Trigger | 1 |
| 41 | 06-82-1080 | M13 x 14mm Pan Hd. Plast. T-10 Screw | 5 |
| 43 | 44-06-0180 | Fuel Gauge Lens | 1 |
| 49 | 43-44-7062 | Motor Brush Seal | 1 |
| 50 | 31-44-2467 | Housing Assembly | 1 |
| 50a | ----- | Housing Cover, Housing Halve-Right | 1 |
| 50b | ----- | Housing Support, Housing Halve-Left | 1 |
| 50c | 45-30-2653 | Rubber Slug | 4 |
| 50d | ----- | Fuel Gauge Label | 1 |
| 51 | 23-66-2467 | Electronics Assembly | 1 |
| 51a | ----- | Battery Connector Block | 1 |
| 51b | ----- | On-Off Switch | 1 |
| 51c | ----- | PCBA | 1 |
| 51d | ----- | LED Assembly | 1 |
| 52 | 23-30-1041 | Motor Assembly with Pinion | 1 |
| 52a | ----- | Motor | 1 |
| 52b | ----- | Motor Mount Plate | 1 |
| 52c | ----- | Motor Mount Screw | 2 |
| 53 | 42-06-1038 | Anvil Assembly | 1 |
| 53a | ----- | Anvil | 1 |
| 53c | ----- | Nylon Washer | 1 |
| 54 | 28-14-2467 | 1/4" Hex Gearcase Assembly | 1 |
| 55 | 43-81-0201 | Hammer Assembly | 1 |
| 56 | 12-20-2469 | Service Nameplate | 1 |
| 57 | 42-55-2415 | Contractor Bag | 1 |
| 58 | 42-70-0058 | Housing Connection Clip | 1 |



NOTE:

As an aid to reassembly, be sure that the left arm of Motor Mount Plate (52b) and the left lug of Hammer Assembly (55) are firmly and squarely seated in the corresponding cavities of the Left Handle Halve (50b).



AS AN AID TO REASSEMBLY, TAKE NOTICE OF WIRE ROUTING AND POSITION IN WIRE GUIDES AND TRAPS WHILE DISMANTLING TOOL.

BE SURE THAT ALL COMPONENTS OF THE ELECTRONICS KIT ARE SEATED FIRMLY AND SQUARELY IN THE HANDLE RECESSES.

AVOID PINCHED WIRES, BE SURE THAT ALL WIRES AND SLEEVES ARE PRESSED COMPLETELY DOWN IN WIRE GUIDES AND TRAPS.

PRIOR TO INSTALLING THE HANDLE COVER ONTO THE HANDLE SUPPORT, BE SURE THAT THERE ARE NO INTERFERENCES.