



SERVICE PARTS LIST

BULLETIN NO.
54-05-2771

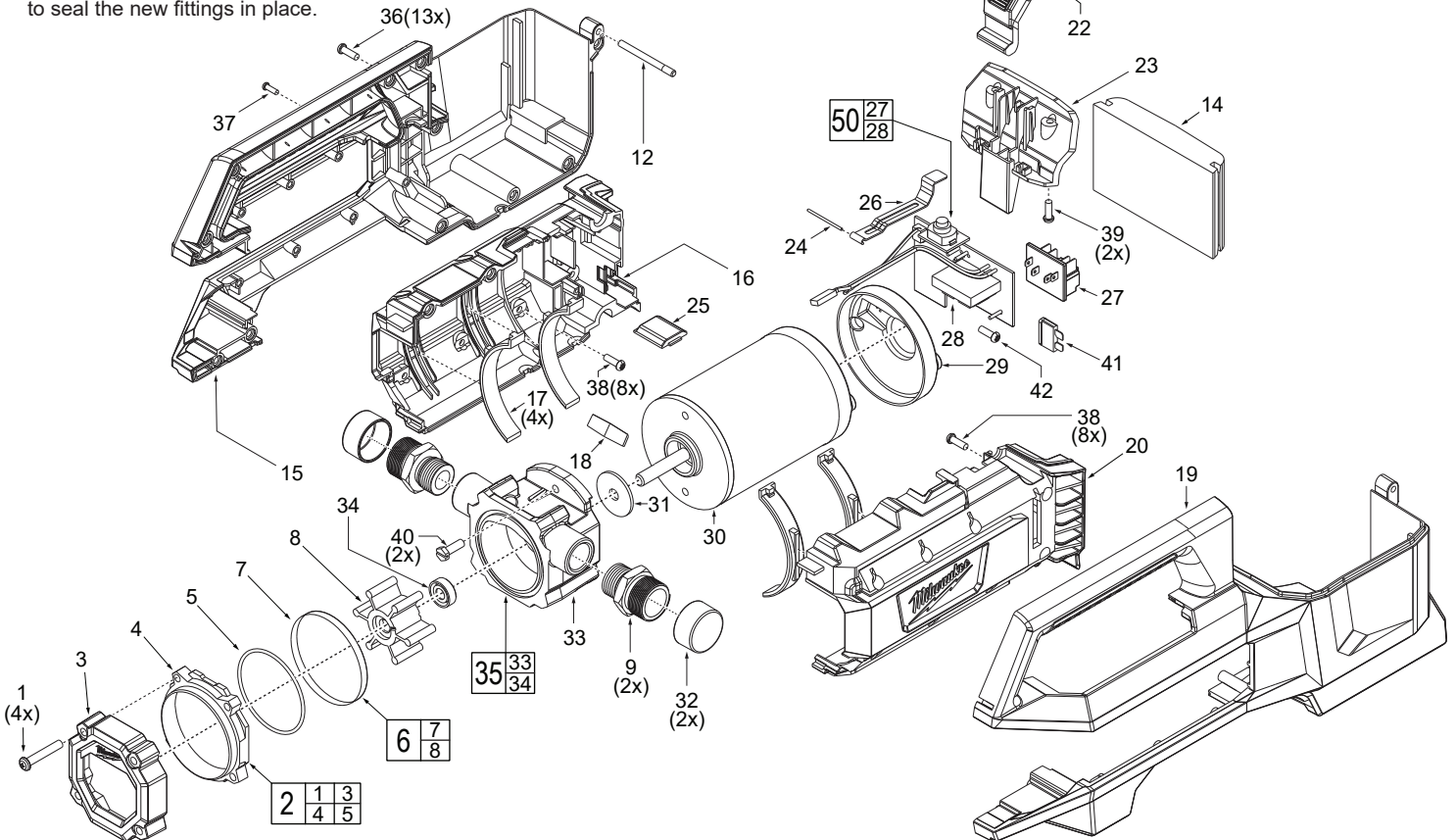
| | | | |
|--|----------------|----------------------------------|-------------------|
| SPECIFY CATALOG NO. AND SERIAL NO. WHEN ORDERING PARTS | | REVISED BULLETIN 54-05-2770 | DATE Sep. 2023 |
| M18™ TRANSFER PUMP | | | |
| CATALOG NO. | 2771-20 | SERIAL NO. | H59B |
| | | WIRING INSTRUCTION See Page 2 | |

EXAMPLE:

| | |
|----|---|
| 00 | 0 |
|----|---|

 Component Parts (Small #) Are Included
 When Ordering The Assembly (Large #).

NOTE:
 Clean internal and external threads
 with wire brush before putting new fit-
 tings in. Teflon tape is recommended
 to seal the new fittings in place.



| FIG. | PART NO. | DESCRIPTION OF PART | NO. REQ. |
|------|------------|-----------------------------------|----------|
| 1 | 06-82-0048 | M5 x 30 Screw Kit (Set of 4) | (1) |
| 2 | 14-38-0018 | Impeller Window Kit | (1) |
| 3 | ----- | Front Cover | (1) |
| 4 | ----- | Lens | (1) |
| 5 | ----- | Window | (1) |
| 6 | 49-16-2771 | Flexible Impeller Kit w/ Grease | (1) |
| 7 | ----- | O-Ring | (1) |
| 8 | ----- | Impeller | (1) |
| 9 | 43-33-0026 | Brass Fitting 1/2" NPT x 3/4" GHT | (2) |
| 10 | 31-21-0022 | Battery Door Kit | (1) |
| 11 | ----- | Battery Door | (1) |
| 12 | ----- | Battery Door Pin | (1) |
| 13 | 12-20-0083 | Service Nameplate (Not Shown) | (1) |
| 14 | 44-52-0054 | Rubber Battery Pad | (1) |
| 15 | 43-40-0207 | Right Half Protective Frame | (1) |
| 16 | 31-44-0542 | Right Half Housing | (1) |
| 17 | 44-52-0060 | Motor Cushion | (4) |
| 18 | 28-28-0047 | Arrow Back Plate | (1) |
| 19 | 43-40-0206 | Left Half Protective Frame | (1) |
| 20 | 31-44-0541 | Left Half Housing | (1) |
| 21 | 44-74-0078 | Battery Door Latch | (1) |
| 22 | 40-50-0429 | Spring | (1) |
| 23 | 44-74-0074 | Door Latch Bay | (1) |
| 24 | 44-66-0177 | Axis Pin | (1) |
| 25 | 31-15-0104 | Switch Button | (1) |
| 26 | 42-36-0038 | Switch Linkage | (1) |
| 27 | ----- | Battery Terminal | (1) |
| 28 | ----- | PCBA Assembly | (1) |

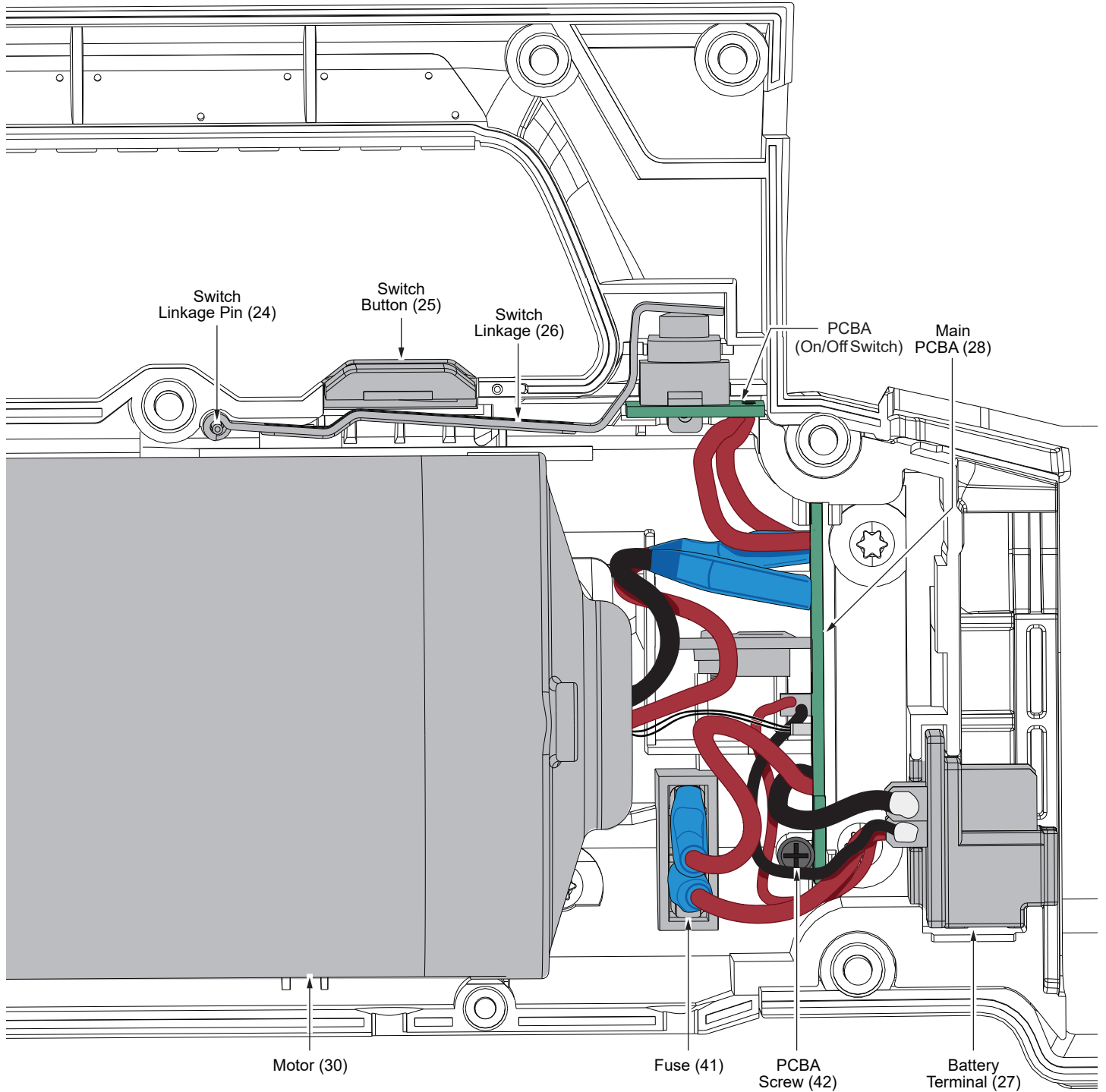
| FIG. | PART NO. | DESCRIPTION OF PART | NO. REQ. |
|------|------------|---------------------------|----------|
| 29 | 22-68-0019 | Motor End Cover | (1) |
| 30 | 16-01-0113 | Motor | (1) |
| 31 | 45-88-0144 | Rubber Washer | (1) |
| 32 | 30-16-0013 | Threads Cap | (2) |
| 33 | ----- | Pump Head | (1) |
| 34 | ----- | Oil Seal NBR | (1) |
| 35 | 42-32-0011 | Pump Service Assembly | (1) |
| 36 | 05-74-0446 | M4 x 16 Screw | (13) |
| 37 | 05-74-0444 | M3 x 9 Screw | (1) |
| 38 | 05-74-0443 | M4 x 10 Screw | (16) |
| 39 | 05-74-0442 | M4 x 12 Screw | (2) |
| 40 | 05-74-0441 | M5 x 10 Screw | (2) |
| 41 | 22-09-0051 | Fuse | (1) |
| 42 | ----- | M3 x 10 Screw | (1) |
| 50 | 14-20-0578 | PCBA + Terminal Block Kit | (1) |

FIG. NOTES

- 9 The brass fittings are a standard size and should be available to purchase at most hardware stores.
- 13 A clean, dry surface is essential for proper performance for any adhesive system. The area intended for application of any adhesive label or nameplate must be prepared by cleaning with isopropyl alcohol. The solvent is to be applied with a clean, lint free applicator and the surface allowed to dry before applying the label or nameplate.

M18 Transfer Pump Wiring

Install the electronics assembly as shown. Be sure all components are seated squarely and firmly in place. Be sure there is no interference when installing the left half protective frame/housing.



SCREW TORQUE SPECIFICATIONS

| FIG. | PART NO. | WHERE USED | SEAT TORQUE | |
|------|------------|------------------|-------------|---------|
| | | | (kgf-cm) | (lb-in) |
| 1 | 06-82-0048 | Front Cover | 11-15 | 10-13 |
| 36 | 05-74-0446 | Housing Support | 12-16 | 10-14 |
| 37 | 05-74-0444 | Housing Support | 6-8 | 5-7 |
| 38 | 05-74-0443 | Protective Frame | 7-9 | 6-8 |
| 39 | 05-74-0442 | Battery Bracket | 9-11 | 8-10 |
| 40 | 05-74-0441 | Pump Head | 10-13 | 9-11 |
| 42 | ----- | PCBA | 6-8 | 5-7 |