



SERVICE PARTS LIST

BULLETIN NO.
54-06-2395

SPECIFY CATALOG NO. AND SERIAL NO. WHEN ORDERING PARTS		REVISED BULLETIN	DATE
M18™ ROVER™ MOUNTING FLOOD LIGHT			Jun. 2017
CATALOG NO.	2365-20	STARTING SERIAL NO.	J43A
WIRING INSTRUCTION			

EXAMPLE:

00	0
----	---

 Component Parts (Small #)
 Are Included When Ordering
 The Assembly (Large #).

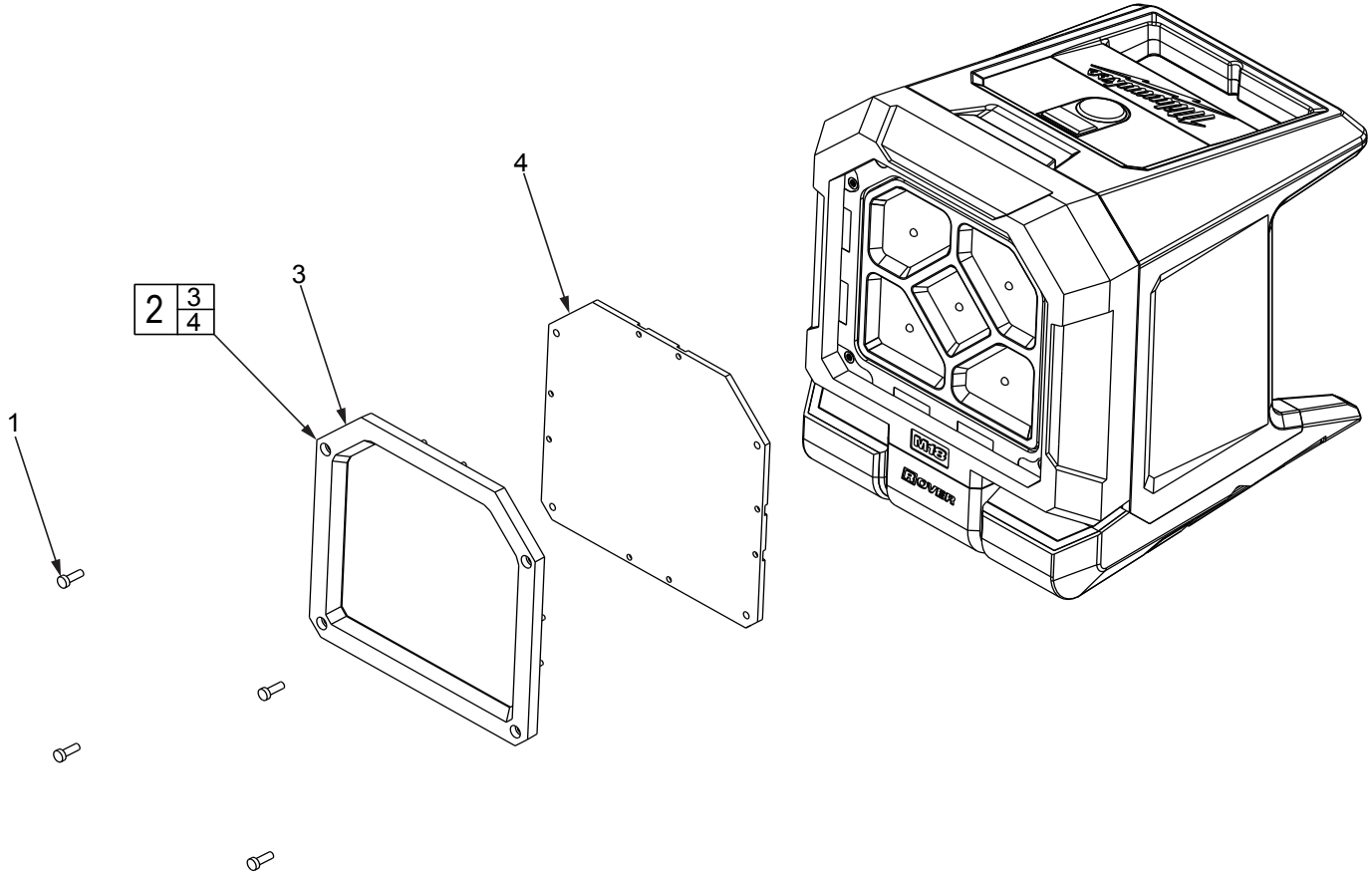


FIG.	PART NO.	DESCRIPTION OF PART	NO. REQ.
1	05-88-0013	M2.5 x 8 Pan Hd. Machine Screw	(4)
2	44-06-0011	Lens Assembly	(1)
3	-----	Lens Cover	(1)
4	-----	Lens	(1)
5	12-20-2335	Service Nameplate (Not Shown)	(1)

FIG. 5 NOTES
 A clean, dry surface is essential for proper performance for any adhesive system. The area intended for application of any adhesive label or nameplate must be prepared by cleaning with isopropyl alcohol. The solvent is to be applied with a clean, lint free applicator and the surface allowed to dry before applying the label or nameplate.