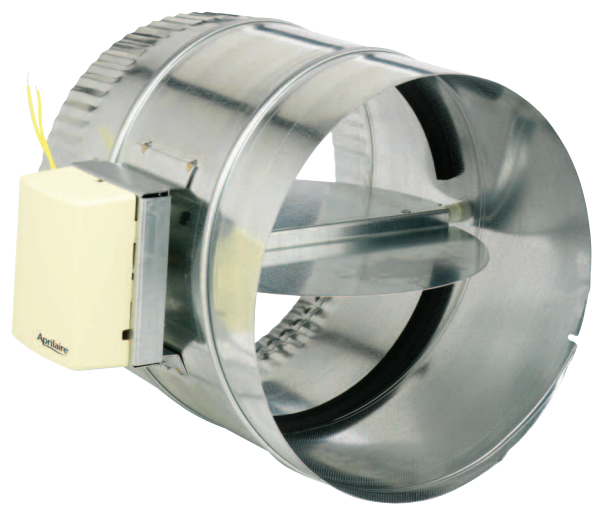


Round Dampers

Aprilaire® round dampers come in all the sizes you need and work well with either rigid metal or flex duct. Adjustable blade positioning and an integrated foam seal provide flexibility for any type of zone job.



REPLACEMENT PARTS

- Model 6992 - Motor (gear shaft) for 18" and 20" round dampers and older Aprilaire and PerfectTemp™ round dampers. (Identified by metal actuator cover.)
- Model 6993 - Motor (shaft with two flat sides) for all Flexible Link™ style Aprilaire round dampers. (Identified by plastic actuator cover.)

Round Dampers Size & Stock No.	Nominal Diameter							
	6" (153mm)	8" (200mm)	10" (250mm)	12" (300mm)	14" (350mm)	16" (400mm)	18" (450mm)	20" (500mm)
Zone (normally-open / power-close)	6606	6608	6610	6612	6614	6616	6618	6620
Ventilation (normally-closed / power-open)	6506	6508	—	—	—	—	—	—

6600 Series

SPECIFICATIONS

- **POWER-CLOSE/SPRING-OPEN OPERATION**
- **TWO WIRE INSTALLATION**
- **24VAC, 6W, 10VA**
- **60HZ SYNCHRONOUS TYPE MOTOR**
- **IMPEDANCE PROTECTED FOR CONTINUOUS STALL**
- **ADJUSTABLE STOP (IN CLOSED POSITION)**

6500 Series

SPECIFICATIONS

- **POWER-OPEN/SPRING-CLOSE OPERATION**
- **TWO WIRE INSTALLATION**
- **24VAC, 6W, 10VA**
- **60HZ SYNCHRONOUS TYPE MOTOR**
- **IMPEDANCE PROTECTED FOR CONTINUOUS STALL**
- **ADJUSTABLE STOP (IN OPEN POSITION)**