



CANNON FABRICATION INC

182 GRANITE STREET, SUITE 101, CORONA, CA 92879

PHONE: (951)278-1830 FAX: (951)278-8444 www.canfab.com canfab@canfab.com

CARRIER 3 - 6-1/2 TONS

48/50HC 04-06, 50HCQ 04-06, 50KCQ 04-06,
48/50LC 04-06, 48/50TC 04-07, 50TCQ 04-07
48/50KC 04-06

PART NO: SEE BELOW

100% BAROMETRIC RELIEF SLIDE-IN HORIZONTAL ECONOMIZER
REPLACES CFI372HA100

SELECT

PRODUCT



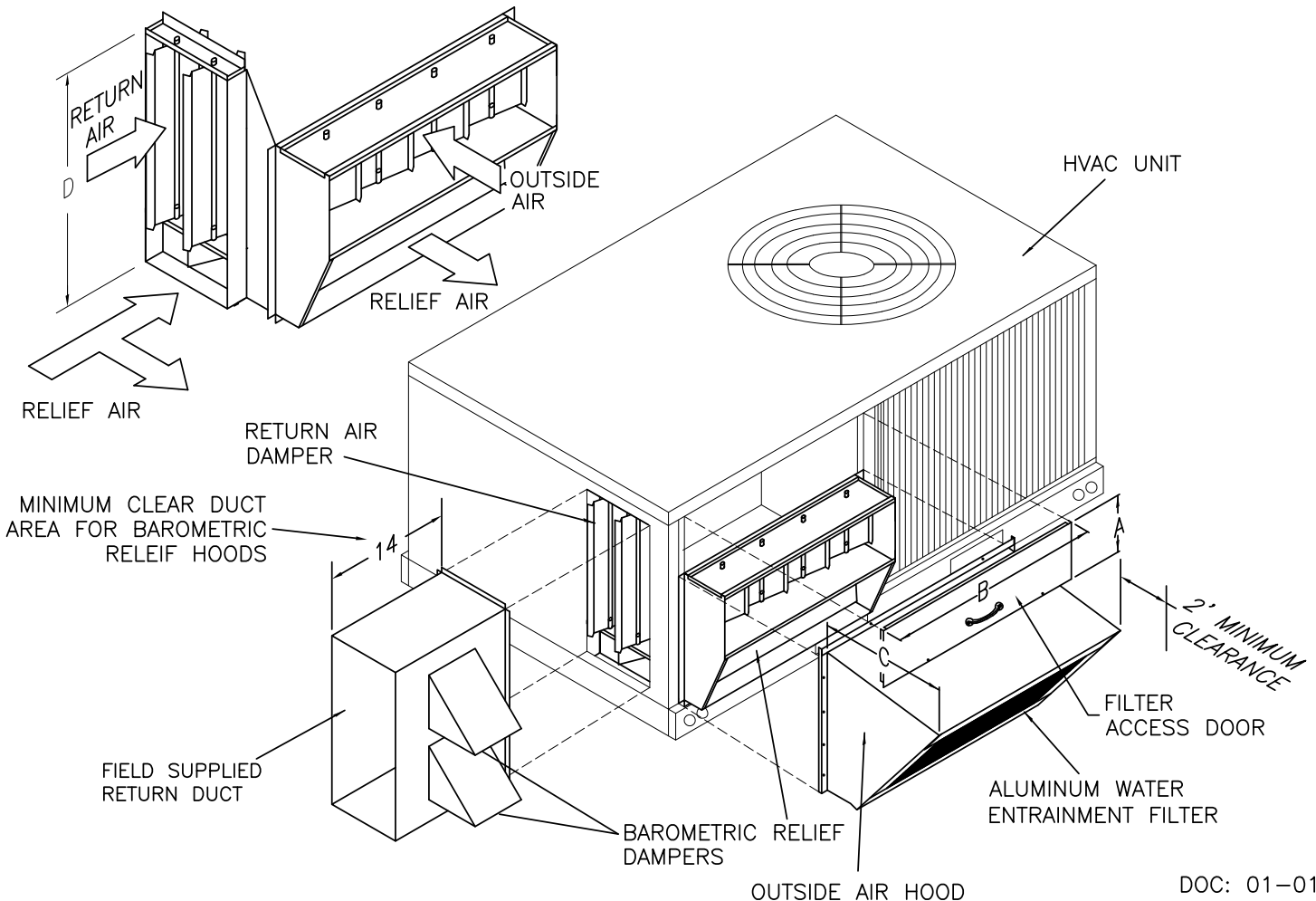
CANFAB PART #	A	B	C	D	RELIEF HOOD SIZE	SHIPP. WEIGHT
1105-HEC	8.625	31.5	18.0	25.6875	2-8 X 8	135 LBS.

FEATURES

- COLOR COORDINATED PAINT FINISH.
- 100% BAROMETRIC RELIEF.
- LOW LEAK DAMPER.
- 100% SHUT DOWN UPON LOSS OF POWER.
- HONEYWELL JADE MODULATING DIFFERENTIAL DRYBULB CONTROL SYSTEM.
- OPTIONAL BELIMO LF24SR-US ACTUATOR AVAILABLE. CONTROLS TO BE FIELD SUPPLIED. ADD "B" TO THE END OF THE PART NUMBER. (BELIMO ACTUATOR ONLY, NO OTHER CONTROLS PROVIDED).

1105-HEC

CFM	SP IN WG
2600	.49
2400	.46
2200	.43
2000	.39
1800	.32
1600	.25
1400	.19
1200	.14
900	.07



DOC: 01-01

PROJECT:	DATE:
ENGINEER:	DISTRIBUTOR:
DRAWING NUMBER:	