



182 GRANITE STREET, SUITE 101, CORONA, CA 92879

PHONE: (951)278-1830 FAX: (951)278-8444 www.canfab.com canfab@canfab.com

CARRIER 6 - 12-1/2 TONS

48/50HC 07-09, 12, 50HCQ 07-09, 48/50TC 08, 09,
12, 14, 50TCQ 08, 09, 12 48/50 LC 07

PART NO: SEE BELOW

**100% BAROMETRIC RELIEF SLIDE-IN HORIZONTAL ECONOMIZER
REPLACES CF1372HB100**

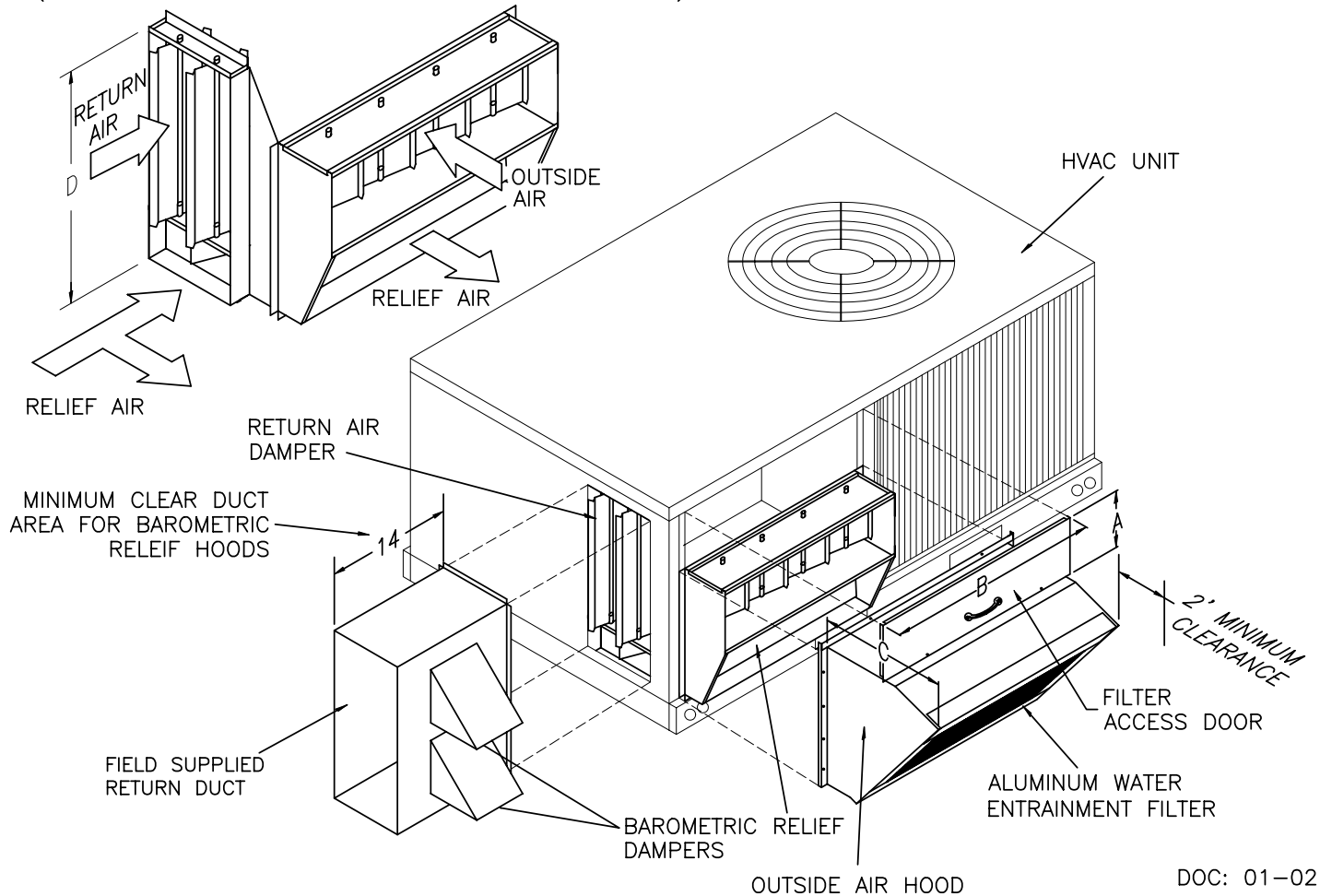
CANFAB PART #	A	B	C	D	RELIEF HOOD SIZE	SHIP. WEIGHT
1107-HEC	10.5 OR 18.5	38.5	18.25	33.625	2-10 X 10	150 LBS.

FEATURES

- o COLOR COORDINATED PAINT FINISH.
- o 100% BAROMETRIC RELIEF.
- o LOW LEAK DAMPER.
- o 100% SHUT DOWN UPON LOSS OF POWER.
- o HONEYWELL MODULATING DRYBULB CONTROL SYSTEM FULLY INTEGRATED. OPTIONS: ENTHALPY "-E"; DIFFERENTIAL ENTHALPY "-DE" ADD "-E" OR "-DE" TO THE END OF PART NUMBER.
- o OPTIONAL BELIMO LF24SR-US ACTUATOR AVAILABLE. CONTROLS TO BE FIELD SUPPLIED. ADD "B" TO THE END OF THE PART NUMBER. (BELIMO ACTUATOR ONLY, NO OTHER CONTROLS PROVIDED).

1107-HEC

CFM	SP IN WG
4000	.47
3500	.38
3000	.28
2500	.20
2200	.17



DOC: 01-02

PROJECT:

DATE:

ENGINEER:

DISTRIBUTOR:

DRAWING NUMBER: