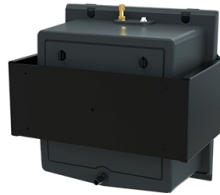


# Wine Guardian®

Freestanding and Integrated  
Humidifiers



## Quick Start Installation Guide





[wineguardian.com](http://wineguardian.com)

Part No. 15H0329-00 REV B 07/2024

## Contents

English .....	page 3
Product overview.....	page 6

### California Proposition

 **65 Warning** 

**WARNING:** This product contains chemicals known to the State of California to cause cancer and birth defects or other reproductive harm.

For more information visit: [www.P65Warnings.ca.gov](http://www.P65Warnings.ca.gov)

---

### Wine Guardian Humidifiers Freestanding and Integrated

This document is a pictorial guide on installing the Wine Guardian humidifier system. It is not intended to replace the detailed instructions found in the WG Humidifier Installation, Operation and Maintenance (IOM) manual, which includes important safety messages all WG installers and owners should carefully follow for safe and optimal performance of the system.

Refer to the IOM manual for installation instructions related to duct collars and duct collar kits, optional remote interface control and remote sensors.

If you have additional questions related your Wine Guardian wine cellar cooling system, please contact your authorized Wine Guardian distributor or your local Wine Guardian office.

---

### Suggested Maintenance Schedule

#### Monthly

- Check drain – clean as needed – confirm steady flow of water while in operation
- Check for noise or vibration

#### Yearly (in addition to above)

- Clean the humidifier and replace humidifier pad if needed (see procedures below)
- Check for any loose fasteners, gaskets or connections
- Check wiring connections and integrity of cords
- Check operation of humidifier fan and water solenoid



## 1. Unpack the unit

- A. Remove unit from box. Check for any signs of concealed damage. Be sure all optional brackets have been included. Contact Wine Guardian immediately if components are missing or unit has been damaged in shipping.



Fig. A

## 2. Installing Integrated humidifier

- B. Remove side access cover at the evaporator section of unit (section with supply and return ductwork to wine room). (Fig. B)
- C. Hook the lower portion of the humidifier to the housing (Fig. C) of the Sentinel Unit and connect the top with the two quarter turn screws (Fig. D)
- D. Attach 1/4" (0.6cm) water supply line at top of humidifier. (Fig. E)
- E. Attach 1/2" (1.3cm) drain line at bottom of humidifier. (Fig. F)
- F. Plug in power/control wire to the humidifier and Wine Guardian unit as shown at main control panel. (Fig. G/H)
- G. Proceed to Step 6 Controller Set up.



Fig. B



Fig. C



Fig. D



Fig. E



Fig. F



Fig. G



Fig. H





Fig. A



Fig. B



Fig. C



Fig. D



Fig. E



Fig. F



Fig. D

### 3. Install Freestanding Humidifier—Surface Mount

A. Determine mounting location for the humidifier within the wine cellar ensuring the location has sufficient access for water supply line, drain line, power cord and service. (Fig. A)

B. Place the mounting bracket at the desired location and mark the holes required to mount the bracket to the wall. (Fig. B)

C. Attach bracket to wall using screws provided within humidifier. **Note: Wall anchors may be required depending on wall construction and stud placement.** (Fig. B)

D. Remove Humidifier from packaging. Remove provided drip pad from the box and run under water to clear any possible debris.

E. Open the back of the Humidifier and install drip pad by lifting lip inside the humidifier. (Fig C)

F. Mount the Humidifier to the bracket and secure it with the provided screws (Fig D/E)

G. Attach 1/4 (0.6cm) water line at top of humidifier. (Fig. F)

H. Attach 1/2" (1.3cm) drain line at bottom of humidifier.

**Note: Water supply line and drain line should be routed at the back side of the unit between the mounting bracket and humidifier chassis. Attach to humidifier prior to step Step G below.**

I. Plug in power/control wire to the humidifier and Wine Guardian unit as shown at main control panel. (Fig. D)

J. Proceed to step 5—Controller set-up



#### 4. Installing Freestanding Humidifier—with power cord and humidistat

- A. Follow Step 4 (surface mount), A-H.
- B. Plug power adapter into 120 volt/1 phase/60 hertz receptacle. (Fig. A)
- C. Mount independent humidistat within wine room mid-point on wall or racking in an area that has sufficient access. (Fig. B)
- D. Refer to Humidistat Operations Manual for additional information
- E. Installation is complete.



#### 5. Controller set-up instructions



Fig. A (TTW)



Fig. B (Ducted)

- A. Locate the Wine Guardian remote interface controller within the wine cellar or proceed to the Wine Guardian Through-the-Wall (TTW) main control panel. (Fig. A & Fig. B)

- B. Ensure the Interface is on and tap an arrow key to “wake-up” the controller.

- C. Press and hold the settings button for five (5) seconds. The screen will advance to the set up menu and “1 F” or “Setting # 1” will appear on the screen. (Fig. C)

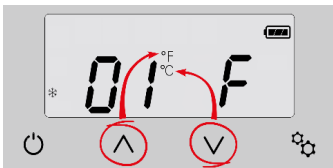


Fig C

- D. Continue to press the settings button to advance to setup screen “6 0” or “Setting # 6”. (Fig. D)

- E. Press the up arrow to advance this setting to either “1” for Integrated Humidifier (mounted at Wine Guardian) or “2” for Freestanding Humidifier Unit for TTW or Ducted. (Fig. D)

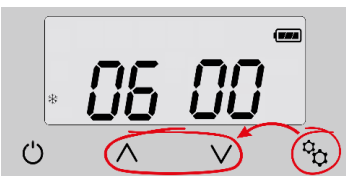


Fig D

- F. Controller setup is complete.

## English

### 1. Front of Unit— Freestanding

- A. Air Intake
- B. Air outlet
- C. Access cover attachment screws
- D. Wall mount bracket
- E. Front access cover

### 2. Back of Unit— Integrated

- A. Humidifier housing
- B. Humidifier pad access cover
- C. Drain connection
- D. Power/control cable

### 1. Front of Unit— Freestanding



**2. Back of Unit - Integrated**



*Wine is Your Passion*

*Preserving it is Ours*



**U. S. Headquarters**  
7000 Performance Drive  
North Syracuse, New York  
USA 13212  
+1 315-452-7400  
wineguardian.com  
info@wineguardian.com