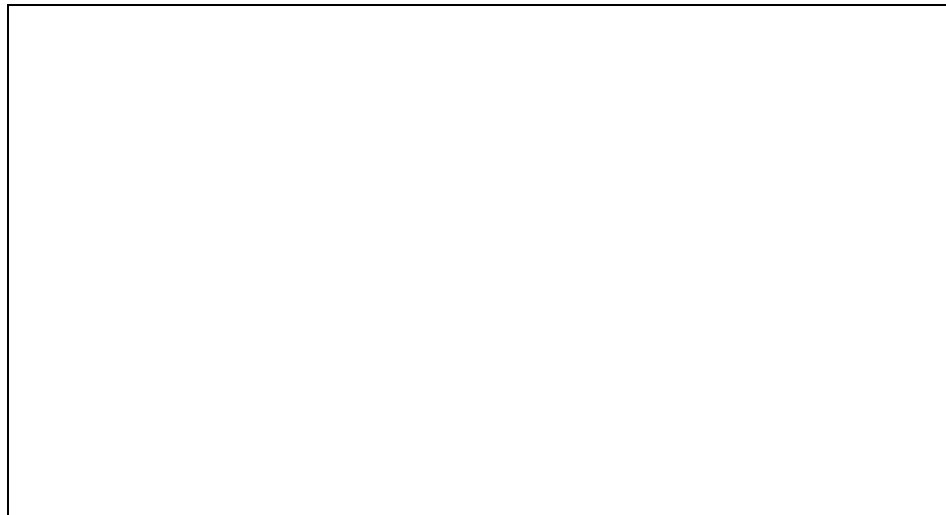




**30RB060-390
AIR-COOLED LIQUID CHILLERS
WITH *COMFORTLINK*[™] CONTROLS
60 Hz**

- **PERFORMANCE DATA**
- **CERTIFIED DIMENSIONAL PRINTS**
- **FIELD WIRING DIAGRAM**



Date:	Supersedes:	30RB060-390 AIR-COOLED LIQUID CHILLERS	30RB	Rev: -2SB
JOB NAME:		LOCATION:		
BUYER:		BUYER P.O.#	CARRIER#	
UNIT NUMBER:		MODEL NUMBER:		
PERFORMANCE DATA CERTIFIED BY:			DATE:	

DESCRIPTION

All 30RB060-390 units are packaged air-cooled liquid chillers that are factory wired, refrigerant piped, and charged with R-410a refrigerant. Any 30RB units with the remote cooler option require field-installed piping, controls, and must be field charged with additional refrigerant. Weatherproof construction and compact design makes 30RB units ideal for rooftop or ground level installation. Upward discharge airflow minimizes directional sound and dissipates heat away from surrounding areas.

FEATURES

Compression

- Hermetic scroll compressors are maintenance free and protected by an auto-adaptive control that minimizes compressor wear.
- External and internal compressor motor protection.
- Complete oil charge.

Refrigerant Circuit

- Unit sizes 060-190 have dual independent refrigerant circuits. Unit sizes 210-300 have three independent refrigerant circuits. Unit sizes 315-390 have four independent refrigerant circuits.
- Low and high side fusible plugs.
- Moisture indicating sight glass.
- Electronic expansion valve with integral sight glass.
- Filter drier, removable core. Optional non-removable core filter drier is available for unit sizes 060-100.
- Discharge and liquid line service valves. An optional suction service valve is available.
- Complete operating refrigerant charge, except for remote cooler option.

Air-Cooled Condenser

- Air-cooled condenser coils are constructed with aluminum plate fins (copper fins optional) mechanically bonded to seamless copper tubes with an integral subcooling circuit.
- Specially designed 3-phase, direct-drive, condenser-fan motors, permanently lubricated bearings.
- External and internal fan motor protection.
- Condenser fans are 9-blade, shrouded axial type, statically and dynamically balanced, discharging air vertically.

Cooler

- Integral shell and tube cooler with 3/4-in. (19 mm) closed cell polyvinyl chloride foam insulation with a maximum waterside pressure of 300 psig (2068 kPa).

Controls

- Microprocessor-based leaving water temperature control with return water compensation.
- Loss of charge protection included.
- Automatic lead-lag circuit operation.
- Seven-day time schedule.
- Chilled water pump start/stop control and primary/stand-by sequencing to ensure equal pump run time.
- Dual chiller control for parallel chiller applications without additional hardware, modules, or control panels.
- Unoccupied low sound operation to limit condenser fan sound during scheduled periods.
- Maintenance scheduling to signal maintenance activities for pumps and strainers.
- Low chilled water flow protection is provided via an electronic thermal dispersion flow switch.
- High-pressure switch.
- Intermediate season head pressure control.
- Microprocessor control includes keypad with diagnostic display with access to set points, time and date, system status including % capacity, operating temperatures and pressures, and alarm conditions.
- Periodic pump start to ensure pump seals are properly maintained during off-season.

Cabinet

- Cabinet constructed of galvanized steel, phosphatized zinc, with electrostatically applied high solids, polyester baked enamel finish with hinged access panels.

Hydronic Package Option

- Optional hydronic pump packages are available (unit sizes 060-190) in single and dual pump arrangements with a maximum waterside pressure of 150 psi (1034 kPa). A strainer, combination valve, and pressure taps are provided with the package.

PERFORMANCE DATA (English)

UNIT

Capacity _____ Tons
 Compressor Power Input _____ kW
 Unit Power Input _____ kW
 Max. Operating Outdoor Temperature _____ F
 Capacity Control Steps _____
 Minimum Capacity _____ %
 Condenser Entering Air Temperature _____ F

COOLER

Entering Water Temperature _____ F
 Leaving Water Temperature _____ F
 Chilled Water Flow _____ gpm
 Chilled Water Pressure Drop _____ ft wg
 Fouling Factor _____ hr ft² °F/Btu
 Fluid _____
 Concentration _____ %

PERFORMANCE DATA (SI)

UNIT

Capacity _____ kW
 Compressor Power Input _____ kW
 Unit Power Input _____ kW
 Max. Operating Outdoor Temperature _____ C
 Capacity Control Steps _____
 Minimum Capacity _____ %
 Condenser Entering Air Temperature _____ C

COOLER

Entering Water Temperature _____ C
 Leaving Water Temperature _____ C
 Chilled Water Flow _____ l/s
 Chilled Water Pressure Drop _____ m wg
 Fouling Factor _____ m² °C/W
 Fluid _____
 Concentration _____ %

ELECTRICAL DATA

Power Supply to Unit _____ V, 3 ph, 60 Hz
 Power Connection Single Dual
 Minimum Circuit Ampacity _____
 Max. Fuse Amps _____
 Recommended Fuse Amps _____

OPTIONS AND ACCESSORIES

FACTORY-INSTALLED OPTIONS

- Pre-Coat Aluminum Fin/Copper Tube Condenser Coil
- E-Coat Aluminum Fin/Copper Tube Condenser Coil
- Copper Fin/Copper Tube Condenser Coil
- E-Coat Copper Fin/Copper Tube Condenser Coil
- BACnet™ Translator
- Compressor Sound Enclosures
- Condenser Coil Trim Panels
- Cooler Heaters
- Energy Management Module
- Hail Guards
- LON Translator
- Minimum Load Control
- Low Ambient Temperature Head Pressure Control
- Non-Fused Disconnect
- Non-Removable Core Filter Drier (060-100)
- Remote Cooler (060-190)
- Service Package (GFI-CO, Remote Service Port)
- Security Grilles, Upper and Lower
- Suction Line Insulation
- Suction Service Valve
- Medium Temperature Brine Operation
- Hydronic Package
 - Single Dual _____ Hp

FIELD-INSTALLED ACCESSORIES

- BACnet Translator
- Chillervisor System Manager
- Condenser Coil Trim Panels
- DataLINK™ Control
- DataPort™ Control
- Energy Management Module
- Ground Fault Interrupter-Convenience Outlet (GFI-CO)
- Hail Guards
- LON Translator
- Minimum Load Control
- Low Ambient Temperature Head Pressure Control
- Navigator™ Display
- Remote Cooler (060-190)
- Remote Enhanced Display
- Remote Service Port
- Security Grilles, Lower
- Security Grilles, Upper
- Signal Repeater
- Signal Repeater, Power Supply
- _____
- _____

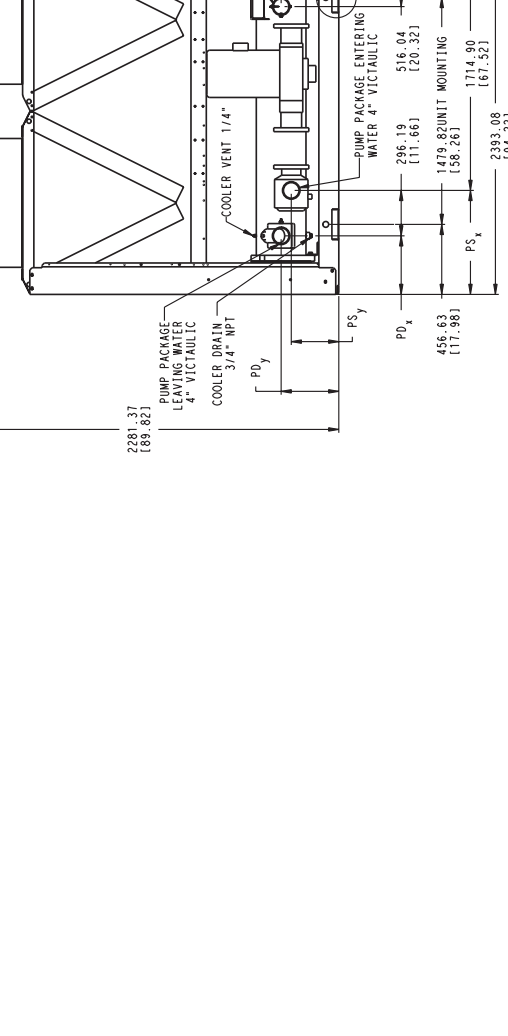
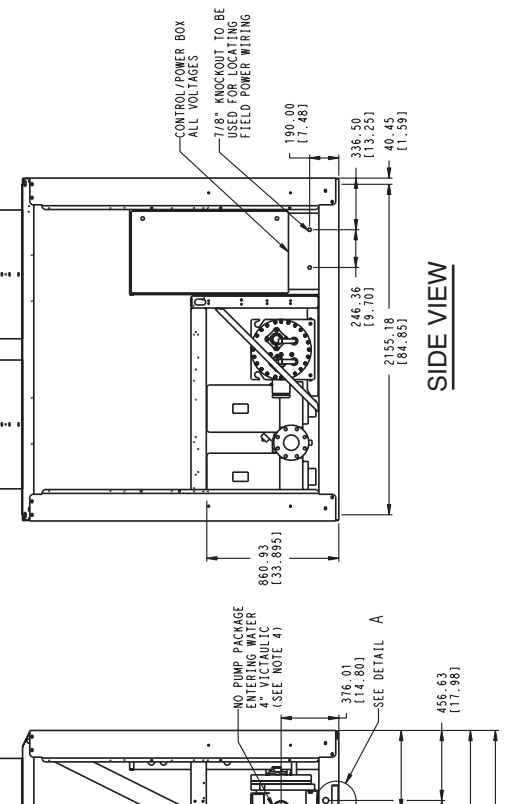
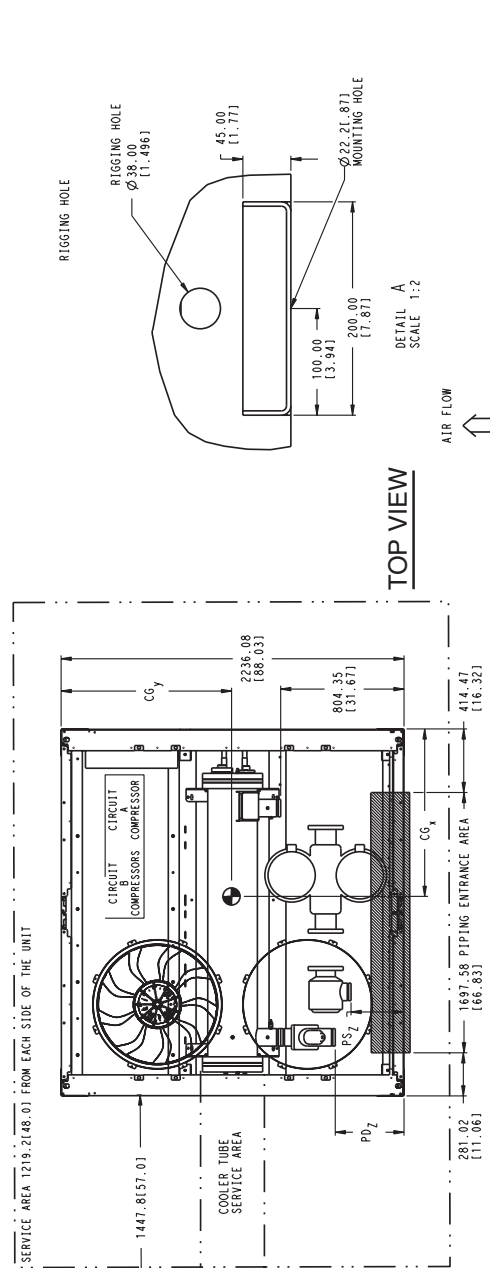
CUT ALONG DOTTED LINE

CUT ALONG DOTTED LINE

CERTIFIED DIMENSION PRINT


UNITED TECHNOLOGIES CARRIER
 P.O. BOX 4808
 THIS DOCUMENT IS THE PROPERTY OF CARRIER CORPORATION
 AND IS DELIVERED UPON THE EXPRESS CONDITION THAT THE
 CONTENTS WILL NOT BE DISCLOSED OR USED WITHOUT CARRIER
 CORPORATION'S WRITTEN CONSENT.
 SUBMISSION OF THESE DRAWINGS OR DOCUMENTS
 DOES NOT CONSTITUTE AN ACCEPTANCE OF CONTRACT.

NOTES: 1. UNIT MUST HAVE CLEARANCES AS FOLLOWS:
 TOP - DO NOT RESTRICT
 SIDES AND END - 6" FROM SOLID SURFACE
 2. ALL PUMPS HAVE DRAINS LOCATED AT THE BOTTOM OF VOLUME FOR DRAINING.
 3. EMERGENCY RELIEF DEVICES ARE LOCATED ON SUCTION, LIQUID LINE AND
 FIELD POWER WIRING. ALL DEVICES ARE TO BE INSTALLED IN ACCORDANCE WITH
 4. NO PUMP PACKAGE LEAVING WATER CONNECTION IS SAME SIZE AND HAS
 SAME Y AND Z DIMENSIONS AS ENTERING WATER. ALSO HAS SAME PDx
 DIMENSION AS PUMP PACKAGE.



WEIGHT	MAX WEIGHT	WEIGHT	MAX WEIGHT	CENTER OF GRAVITY			PUMP SUCTION (PS)			PUMP DISCHARGE (PD)						
				CU/AL	IB/KG	MM [INCH]	CGx	CGy	CGz	X	Y	Z	X	Y	Z	
30RB-060	3872	4705	4354	5187	1164	1038	±.25	±.25	±.25	±.25	±.25	±.25	±.25	±.25	±.25	±.25
1756	2134	1975	2353	(45.82)	(40.86)	(40.86)	(76.6)	(112.2)	(113.9)	(115.0)	(14.8)	(17.6)	(17.6)	(17.6)	(17.6)	(17.6)
30RB-070	4077	4911	4560	5393	1165	1013	±.25	±.25	±.25	±.25	±.25	±.25	±.25	±.25	±.25	±.25
1849	2228	2068	2446	(45.86)	(39.88)	(39.88)	(76.6)	(112.2)	(113.9)	(115.0)	(14.8)	(17.6)	(17.6)	(17.6)	(17.6)	(17.6)

DATE: 03/02/05
 SUPERSEDES: 09/14/04
 30RB-060,070 AIR COOLED CHILLER
 00DCN500000100A
 REV: B

CUT ALONG DOTTED LINE

CUT ALONG DOTTED LINE

CERTIFIED DIMENSION PRINT

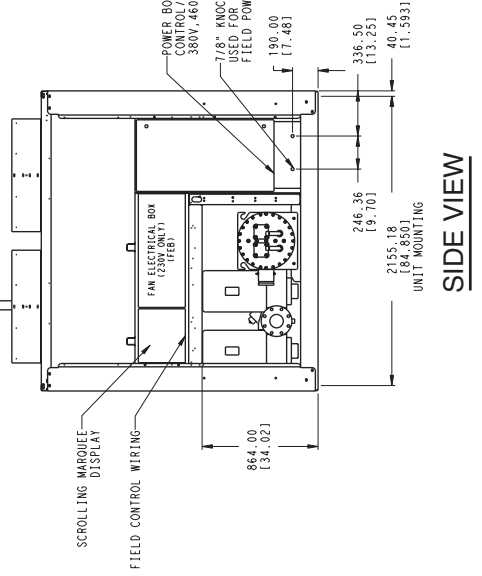
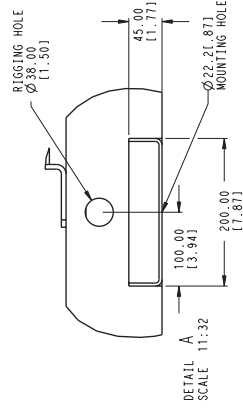
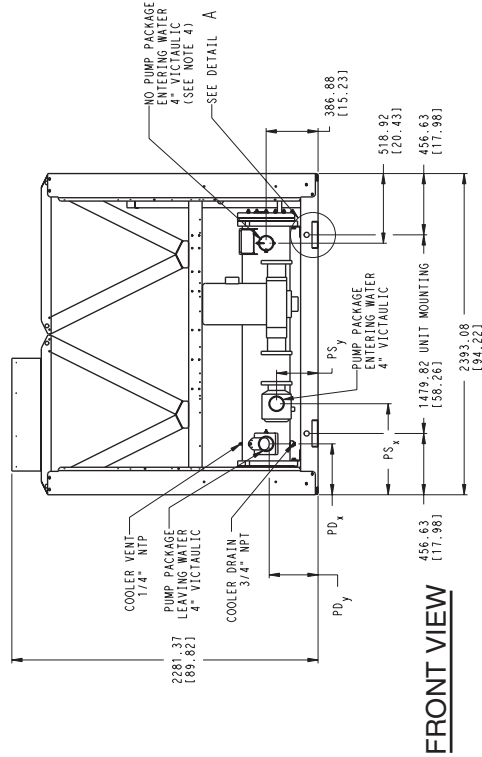
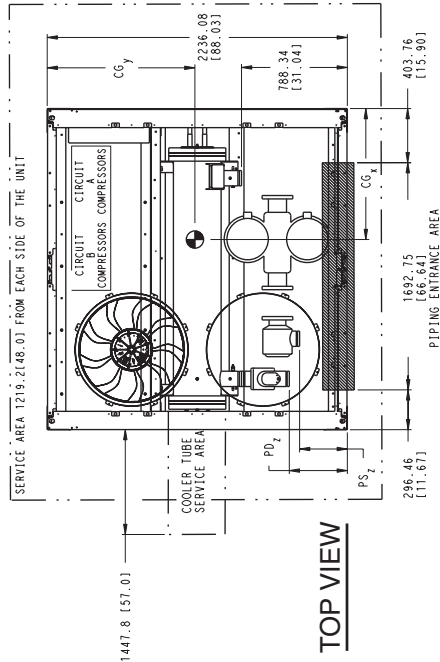
NOTES: 1. UNIT MUST HAVE CLEARANCES AS FOLLOWS:

- TOP: DO NOT RESTRICT FROM SOLID SURFACE
- 2. SIDE SHIMS AND BRACKETING LOCATED AT BOTTOM OF VOLUME FOR DRAINING.
- 3. TEMPERATURE RELIEF DEVICES LOCATED ON SUCTION LINE LIQUID LINE AND FILTER DRIER OF EACH CIRCUIT AND HAVE 1/4" FLARE CONNECTION.
- 4. NO PUMP PACKAGE LEAVING WATER CONNECTION IS SAME SIZE AND HAS SAME Y AND Z DIMENSIONS AS ENTERING WATER. ALSO HAS SAME PDx DIMENSION AS PUMP PACKAGE.

UNITED TECHNOLOGIES SYRACUSE, NY
CARRIER

P.O. BOX 4888
13221

THIS DOCUMENT IS THE PROPERTY OF CARRIER CORPORATION. SUBMISSION OF THESE DRAWINGS OR DOCUMENTS AND IS LIMITED TO THE EXPRESS CONDITION THAT THE USER DOES NOT CONSTITUTE PART PERFORMANCE OF CONTRACT. NO USE IS TO BE MADE WITHOUT CARRIER CORPORATION'S WRITTEN CONSENT.



WEIGHT	MAX WEIGHT	MAX WEIGHT	CENTER OF GRAVITY			PUMP SUCTION (PS)			PUMP DISCHARGE (PD)				
			CU/AL	CU/AL	CU/AL	X	Y	Z	X	Y	Z		
4335	5258	4817	1206	1012	675.6	309.9	353.1	381.0	391.2	429.3	±.25	±.25	±.25
1966	2385	2185	2604	2604	2604	126.6	122.2	113.9	115.4	116.9	±.25	±.25	±.25

DATE	03/02/05	DATE	11/17/04
REV	B	REV	B
DESCRIPTION	30RB-080 AIR COOLED CHILLER	DESCRIPTION	30RB-080 AIR COOLED CHILLER
REV	00DCN50000200A	REV	00DCN50000200A

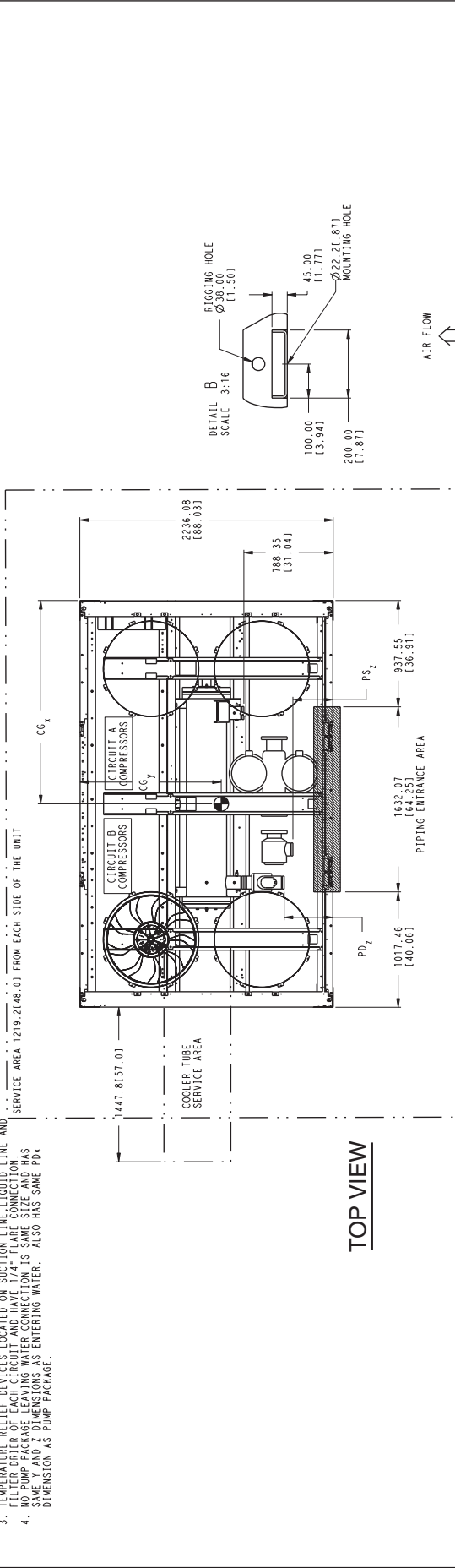
CERTIFIED DIMENSION PRINT

UNITED TECHNOLOGIES SYRACUSE, NY
 P.O. BOX 4808
 13221

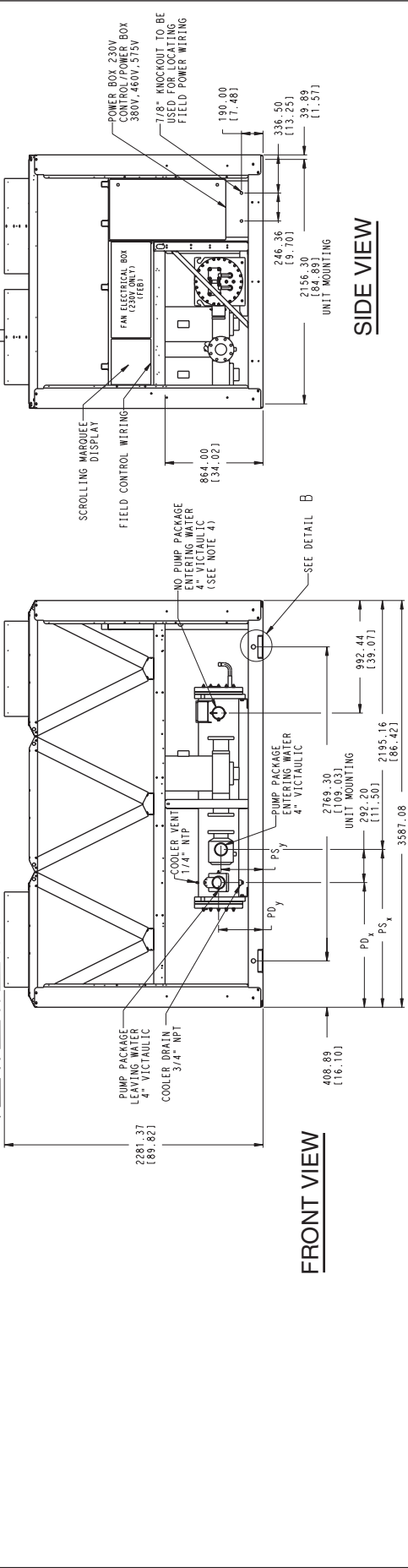


THIS DOCUMENT IS THE PROPERTY OF CARRIER CORPORATION AND IS TO BE USED ONLY FOR THE PROJECT AND SITE SPECIFICALLY IDENTIFIED HEREON. IT IS TO BE RETURNED TO CARRIER CORPORATION'S WRITER'S CONSENT.

SUBMISSION OF THESE DRAWINGS OR DOCUMENTS TO ANY OTHER PARTY WITHOUT CARRIER'S WRITER'S CONSENT DOES NOT CONSTITUTE PART PERFORMANCE OR ACCEPTANCE OF CONTRACT.



TOP VIEW



FRONT VIEW

SIDE VIEW

WEIGHT CU/AL lb/kg	MAX WEIGHT CU/AL lb/kg	MAX WEIGHT CU/CU lb/kg	CENTER OF GRAVITY			PUMP SUCTION (PS)			PUMP DISCHARGE (PD)		
			CG _x MM [INCH]	CG _y MM [INCH]	CG _z MM [INCH]	X ±.25	Y ±.25	Z ±.25	X ±.25	Y ±.25	Z ±.25
5667	6590	6391	1625	1017	1389.4	309.9	353.1	1097.3	391.2	429.3	
2571	2889	2899	164.0	(40.0)	(54.7)	(12.2)	(13.9)	(43.2)	(15.4)	(16.9)	
5890	6813	6614	1614	999	1389.4	309.9	353.1	1097.3	391.2	429.3	
2672	3090	3000	(63.5)	(39.3)	(54.7)	(12.2)	(13.9)	(43.2)	(15.4)	(16.9)	

DATE: 03/02/05
 SUPERCEDES: 11/18/04
 30RB-090,100 AIR COOLED CHILLER
 00DCN50000300A
 REV: B

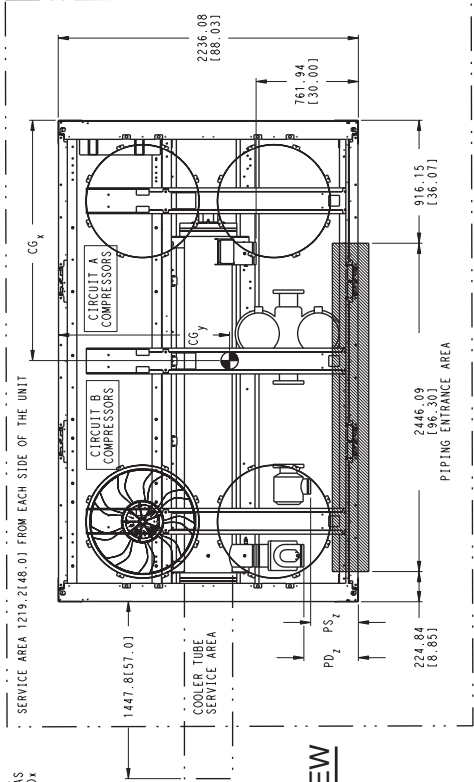
CUT ALONG DOTTED LINE

CUT ALONG DOTTED LINE

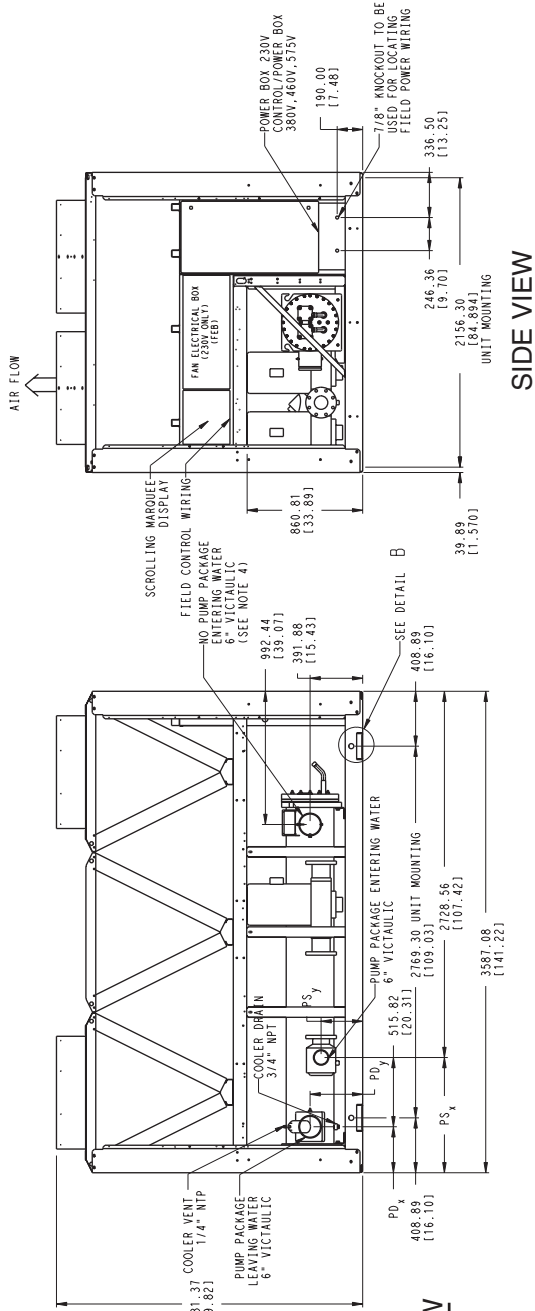
CERTIFIED DIMENSION PRINT

- NOTES: 1. UNIT MUST HAVE CLEARANCES AS FOLLOWS:
 TOP - DO NOT RESTRICT
 SIDES AND END - 6" FROM SOLID SURFACE
 2. ALL PUMPS HAVE DRAINS LOCATED AT THE BOTTOM OF VOLUME FOR DRAINING.
 TEMPERATURE RELIEF DEVICES LOCATED ON SUCTION LINE LIQUID LINE AND
 3. EACH REFRIGERANT CONDENSER MUST HAVE A 1/4" FLARE CONNECTION.
 NO PUMP PACKAGE SHALL BE MOUNTED ON A CONCRETE SLAB.
 4. SAME Y AND Z DIMENSIONS AS ENTERING WATER. ALSO HAS SAME PD_x
 DIMENSION AS PUMP PACKAGE.

P.O. BOX 4808
 UNITED TECHNOLOGIES SYRACUSE, NY 13221
 THIS DOCUMENT IS THE PROPERTY OF CARRIER CORPORATION AND IS DELIVERED UPON THE EXPRESS CONDITION THAT THE CONTENTS WILL NOT BE DISCLOSED OR USED WITHOUT CARRIER CORPORATION'S WRITTEN CONSENT.
 SUBMISSION OF THESE DRAWINGS OR DOCUMENTS DOES NOT CONSTITUTE AN ACCEPTANCE OF CONTRACT.



TOP VIEW




FRONT VIEW

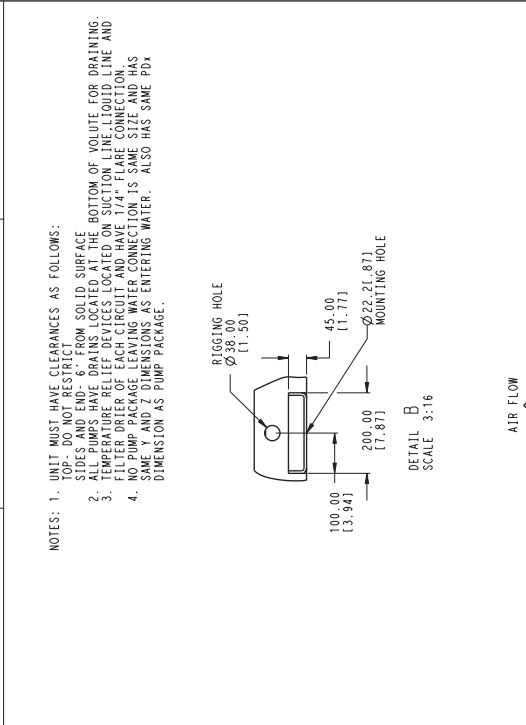
SIDE VIEW

WEIGHT Lb/Kg	MAX WEIGHT Lb/Kg	WEIGHT Lb/Kg	MAX WEIGHT Lb/Kg	CENTER OF GRAVITY MM (INCH)	PUMP SUCTION (PS)	PUMP DISCHARGE (PD)
6144	7067	6868	7191	171.3	50.9	340.4
2787	3206	3115	3534	(67.44)	(39.25)	(133.71)
					(2.4)	(13.4)
					(11.1)	(43.4)
					(2.4)	(15.4)
					(11.1)	(45.2)

DATE	05/04/05	SUPERSEDES	03/02/05
REV	C	00DCN500000400A	

CERTIFIED DIMENSION PRINT

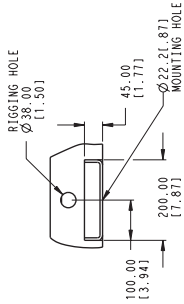

UNITED TECHNOLOGIES SYRACUSE, NY
CARRIER
 P.O. BOX 4808
 13221
 THIS DOCUMENT IS THE PROPERTY OF CARRIER CORPORATION AND IS TO BE USED ONLY FOR THE SPECIFIC CONDITION, INSTALLATION, AND/OR SERVICE FOR WHICH IT WAS PREPARED. IT DOES NOT CONSTITUTE PART PERFORMANCE OR ACCEPTANCE OF CONTRACT.



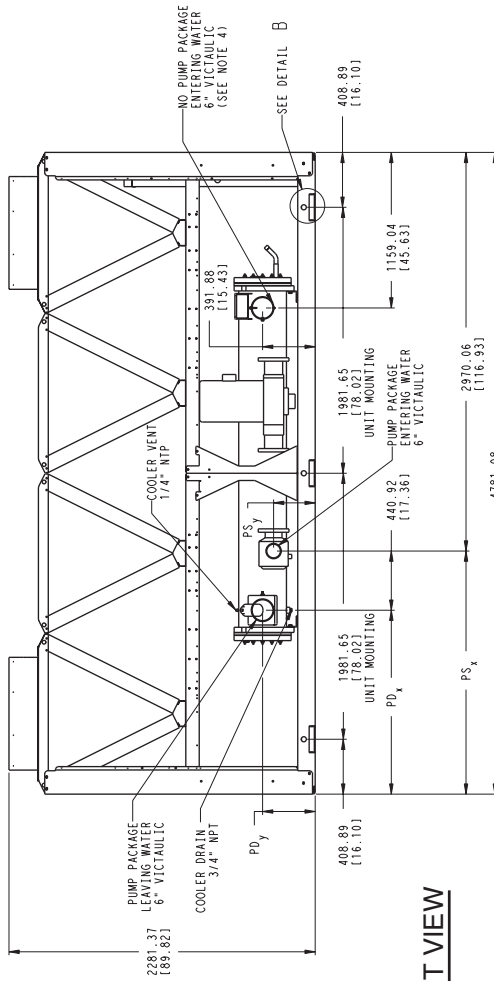
TOP VIEW

NOTES: 1. UNIT MUST HAVE CLEARANCES AS FOLLOWS:

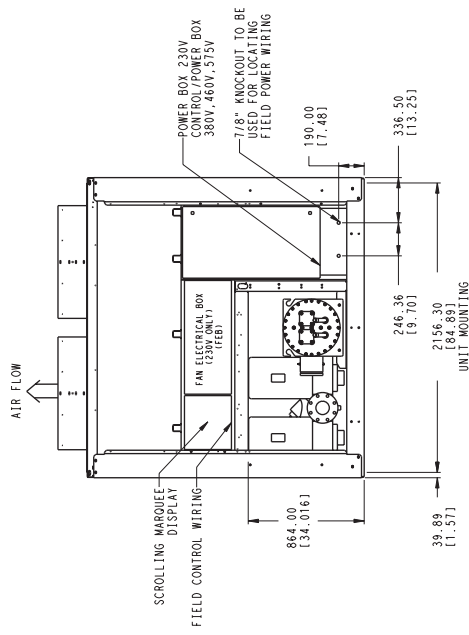
1. TOP- DO NOT RESTRICT ON SOLID SURFACE
2. ALL PUMPS HAVE DRAINING LOCATED AT THE BOTTOM OF VOLUME FOR DRAINING
3. TEMPERATURE RELIEF DEVICES LOCATED ON SUCTION LINE LIQUID LINE AND FILTER DRIER OF EACH CIRCUIT AND HAVE 1/4" FLARE CONNECTION
4. NO PUMP PACKAGE LEAVING WATER CONNECTION IS SAME SIZE AND HAS SAME AND 2 DIMENSIONS AS ENTERING WATER. ALSO HAS SAME PDx DIMENSION AS PUMP PACKAGE.



DETAIL B
SCALE 3:16



FRONT VIEW



SIDE VIEW

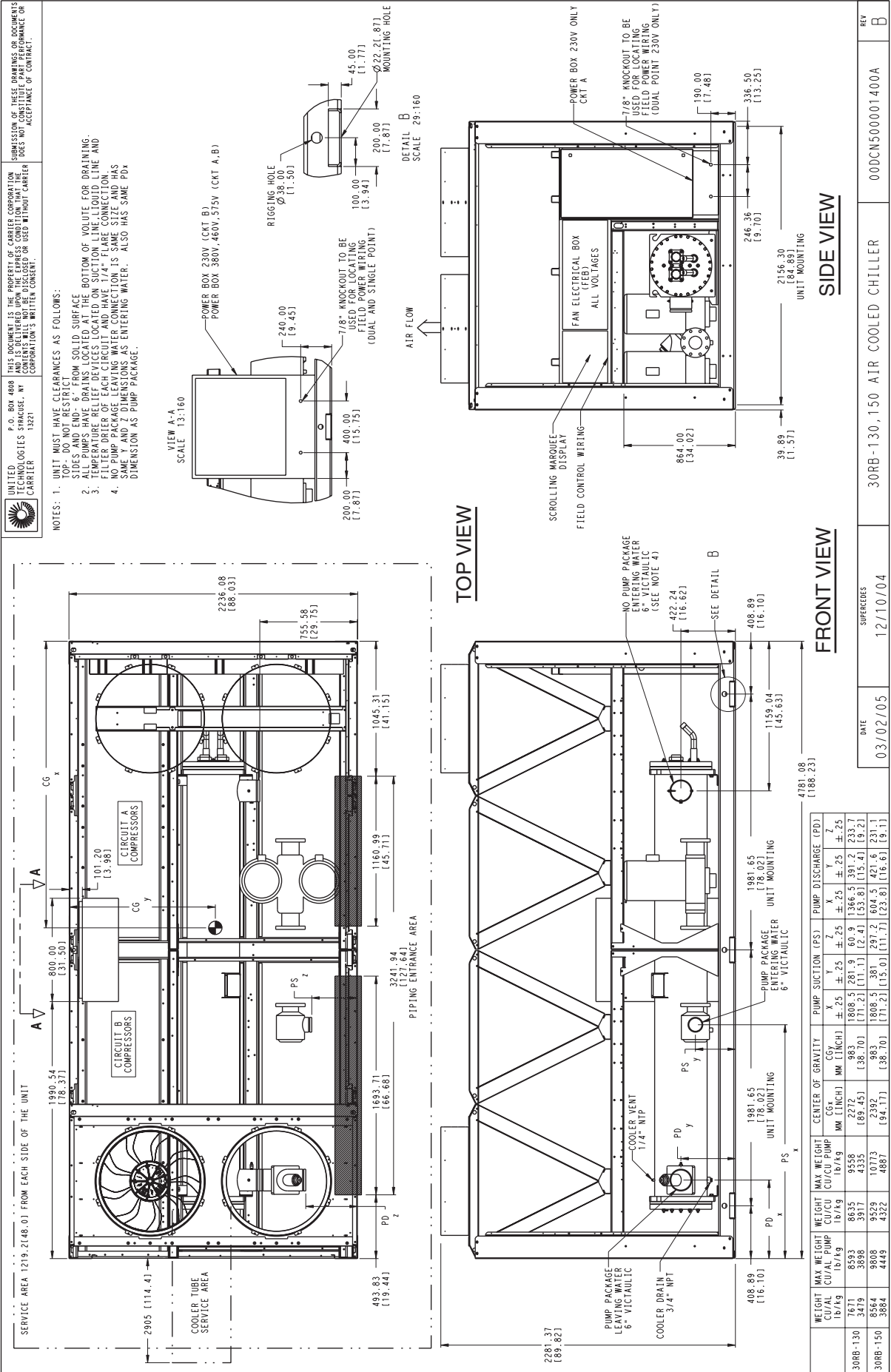
WEIGHT CU/AL lb/Kg	MAX WEIGHT CU/AL lb/Kg	WEIGHT CU/AL lb/Kg	MAX WEIGHT CU/AL lb/Kg	CENTER OF GRAVITY			PUMP SUCTION (PS)			PUMP DISCHARGE (PD)							
				CGx MM [INCH]	CGy MM [INCH]	CGz MM [INCH]	x MM [INCH]	y MM [INCH]	z MM [INCH]	x MM [INCH]	y MM [INCH]	z MM [INCH]					
3318	3737	8159	9082	2346	993	1808.5	281.9	60.9	1366.5	391.2	233.7	1808.5	281.9	60.9	1366.5	391.2	233.7
3318	3737	8159	9082	92.36	39.09	111.1	12.4	53.8	115.4	9.2	92.36	39.09	111.1	12.4	53.8	115.4	9.2

30RB-120	30RB-120 AIR COOLED CHILLER	00DCN50000500A	REV B
DATE	03/02/05	SUPERCEDES	12/10/04

CUT ALONG DOTTED LINE

CUT ALONG DOTTED LINE

CERTIFIED DIMENSION PRINT

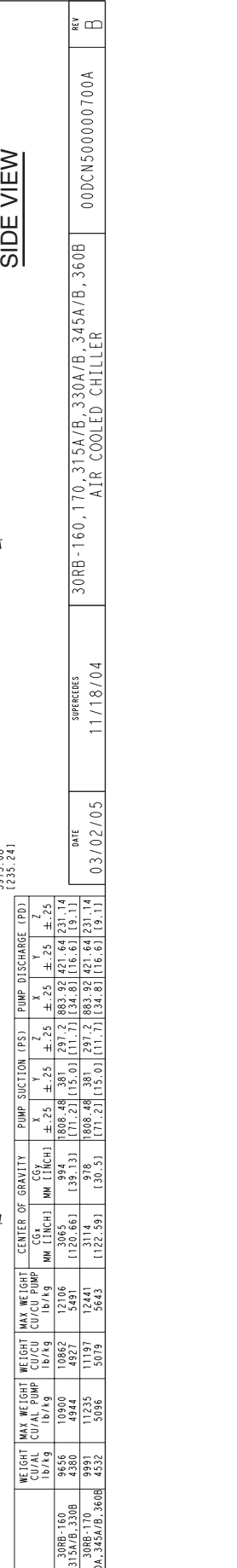
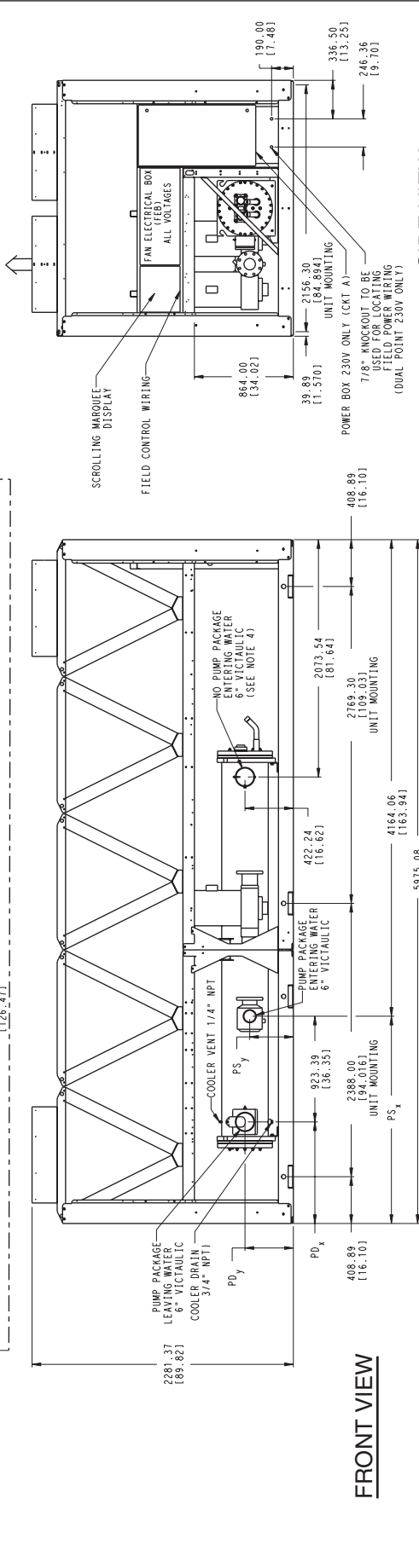
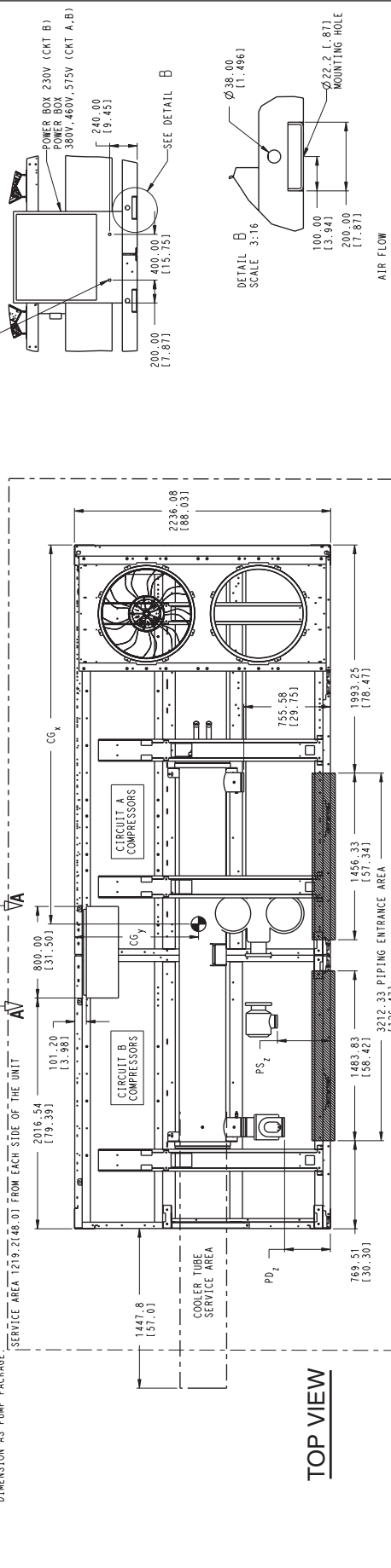


CERTIFIED DIMENSION PRINT

UNITED TECHNOLOGIES STRAUSSE, NY
 CARRIER
 13221

THIS DOCUMENT IS THE PROPERTY OF CARRIER CORPORATION AND IS BELIEVED UPON THE EXPRESS CONDITION THAT THE CONTENTS SHALL NOT BE DISCLOSED OR USED WITHOUT CARRIER CORPORATION'S WRITTEN CONSENT.
 SUBMISSION OF THESE DRAWINGS OR DOCUMENTS DOES NOT CONSTITUTE AN OFFER OF CONTRACT OR ACCEPTANCE OF CONTRACT.

NOTES: 1. UNIT MUST HAVE CLEARANCES AS FOLLOWS:
 SIDES - DO NOT RESTRICT
 TOPS - DO NOT RESTRICT
 2. ALL PUMPS HAVE DRAINS LOCATED AT THE BOTTOM OF VOLUME FOR DRAINING.
 3. FILTER ORDER OF EACH CIRCUIT AND HAVE 1/4" FLARE CONNECTION.
 4. NO PUMP PACKAGE LEAVING WATER CONNECTION IS SAME SIZE AND HAS SAME Y AND Z DIMENSIONS AS ENTERING WATER. ALSO HAS SAME PD_x DIMENSION AS PUMP PACKAGE.



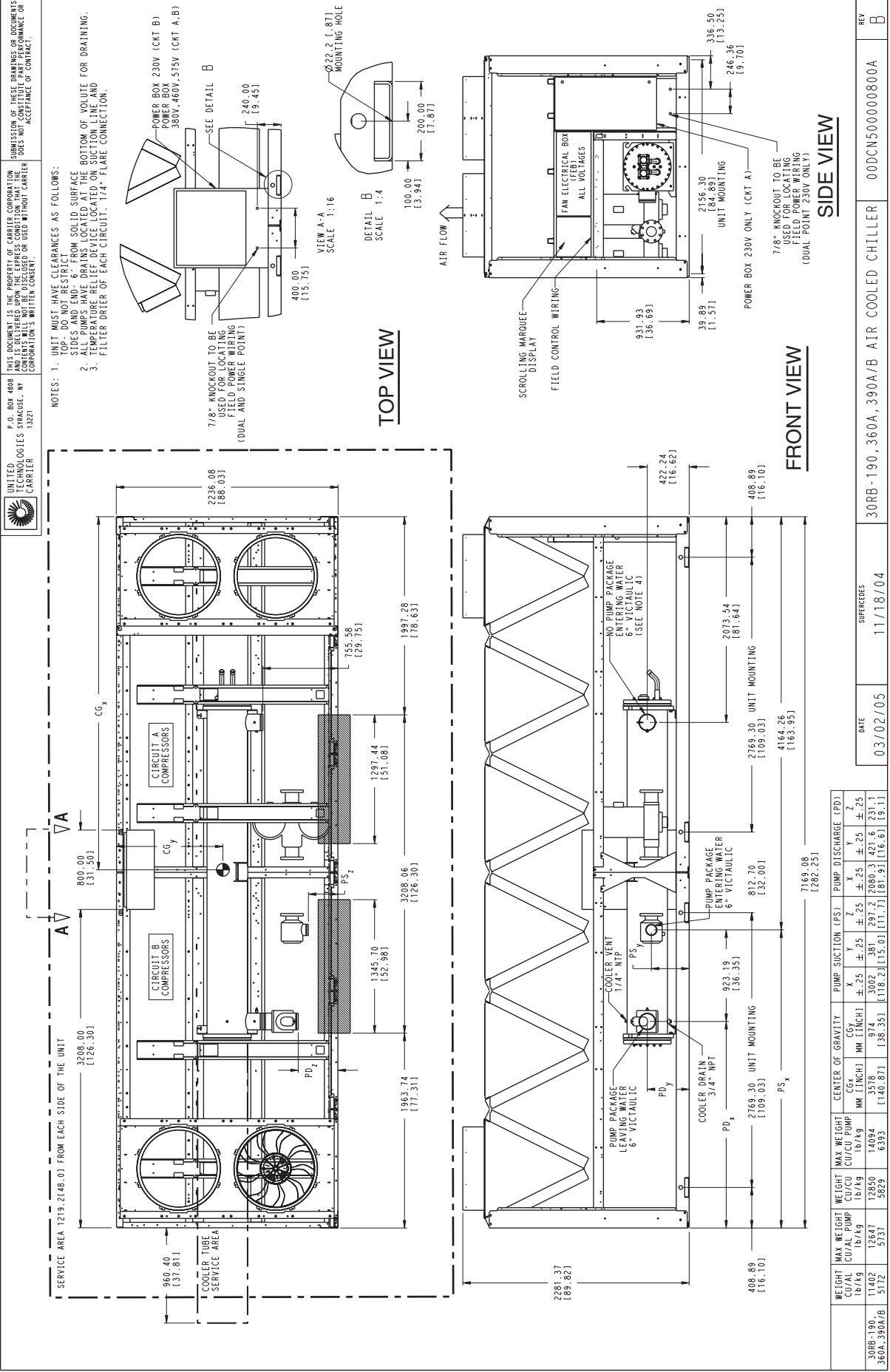
WEIGHT	MAX WEIGHT CU/HP	WEIGHT	MAX WEIGHT CU/HP	WEIGHT	MAX WEIGHT CU/HP	WEIGHT	MAX WEIGHT CU/HP	WEIGHT	MAX WEIGHT CU/HP
lb/ft ³	lb/ft ³	lb/ft ³	lb/ft ³	lb/ft ³	lb/ft ³	lb/ft ³	lb/ft ³	lb/ft ³	lb/ft ³
30RB-160	9656	10930	12706	10862	12706	10862	12706	10862	12706
315A/B-330B	4390	4944	4927	5491	5491	5491	5491	5491	5491
30RB-170	9991	11235	11197	12441	12441	12441	12441	12441	12441
330A, 345A/B-360B	4532	5096	5079	5643	5643	5643	5643	5643	5643

DATE: 03/02/05
 SUPERSEDES: 11/18/04
 30RB-160, 170, 315A/B, 330A/B, 345A/B, 360B
 AIR COOLED CHILLER
 00DCN500000700A
 REV B


CUT ALONG DOTTED LINE

CUT ALONG DOTTED LINE

CERTIFIED DIMENSION PRINT

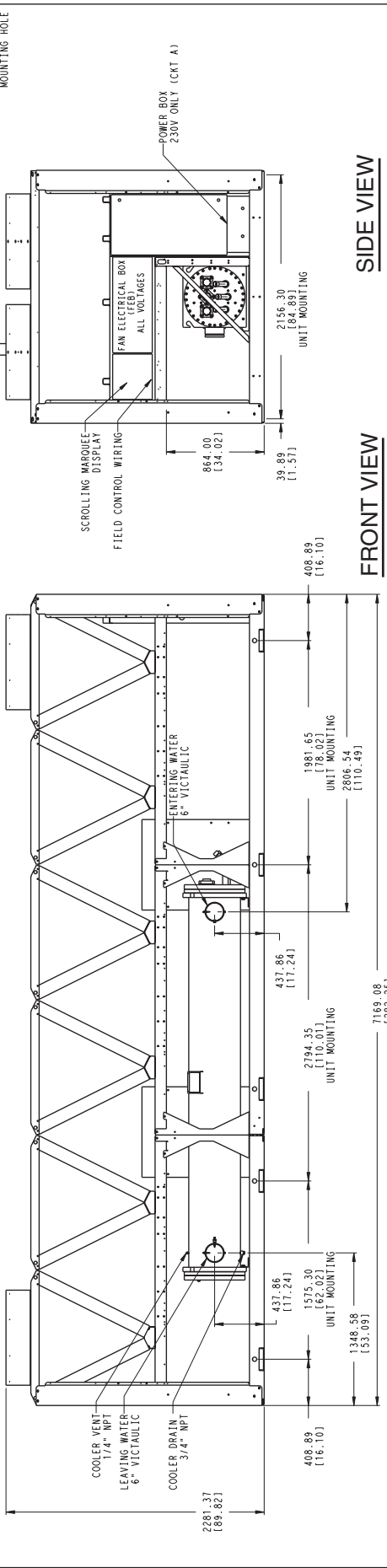
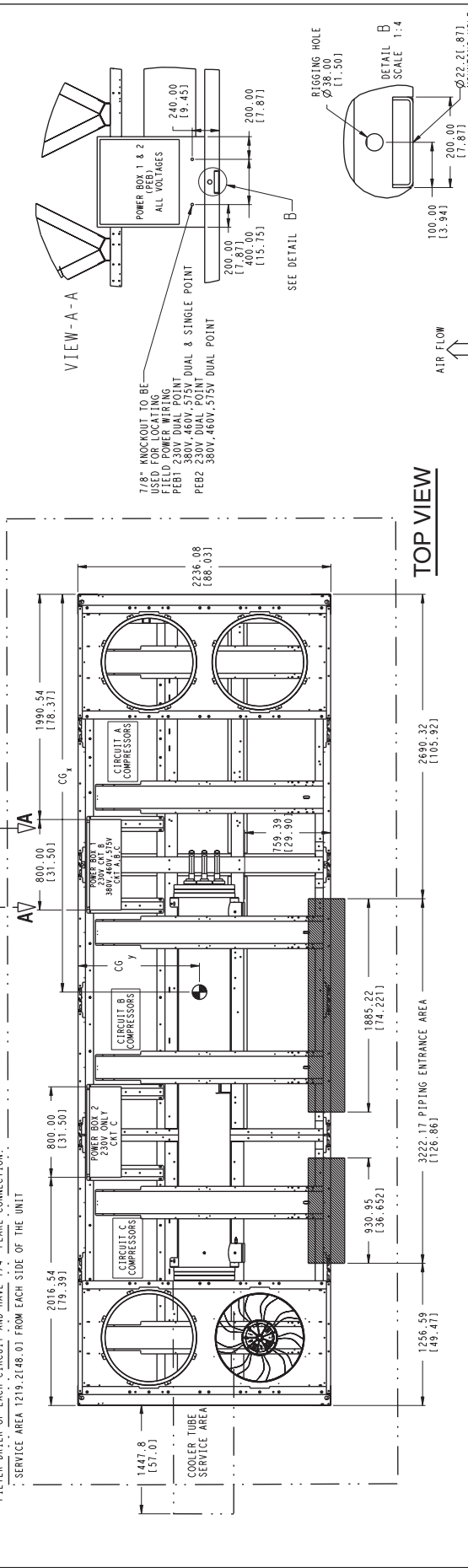


CERTIFIED DIMENSION PRINT



 UNITED TECHNOLOGIES CARRIER

P.O. BOX 4808
 THIS DOCUMENT IS THE PROPERTY OF CARRIER CORPORATION AND IS DELIVERED UPON THE EXPRESS CONDITION THAT THE CONTENTS WILL NOT BE DISCLOSED OR USED WITHOUT CARRIER CORPORATION'S WRITTEN CONSENT.
 SUBMISSION OF THESE DRAWINGS OR DOCUMENTS DOES NOT CONSTITUTE AN ACCEPTANCE OF CONTRACT.



- NOTES: 1. UNIT MUST HAVE CLEARANCES AS FOLLOWS:
 TOP - DO NOT RESTRICT
 SIDES AND END - 6" FROM SOLID SURFACE
 2. TEMPERATURE RELIEF DEVICES LOCATED ON SUCTION LINE, LIQUID LINE AND FILTER DRAIN OF EACH CIRCUIT AND HAVE 1/4" FLARE CONNECTION.
 SERVICE AREA 1219.21(48.01) FROM EACH SIDE OF THE UNIT

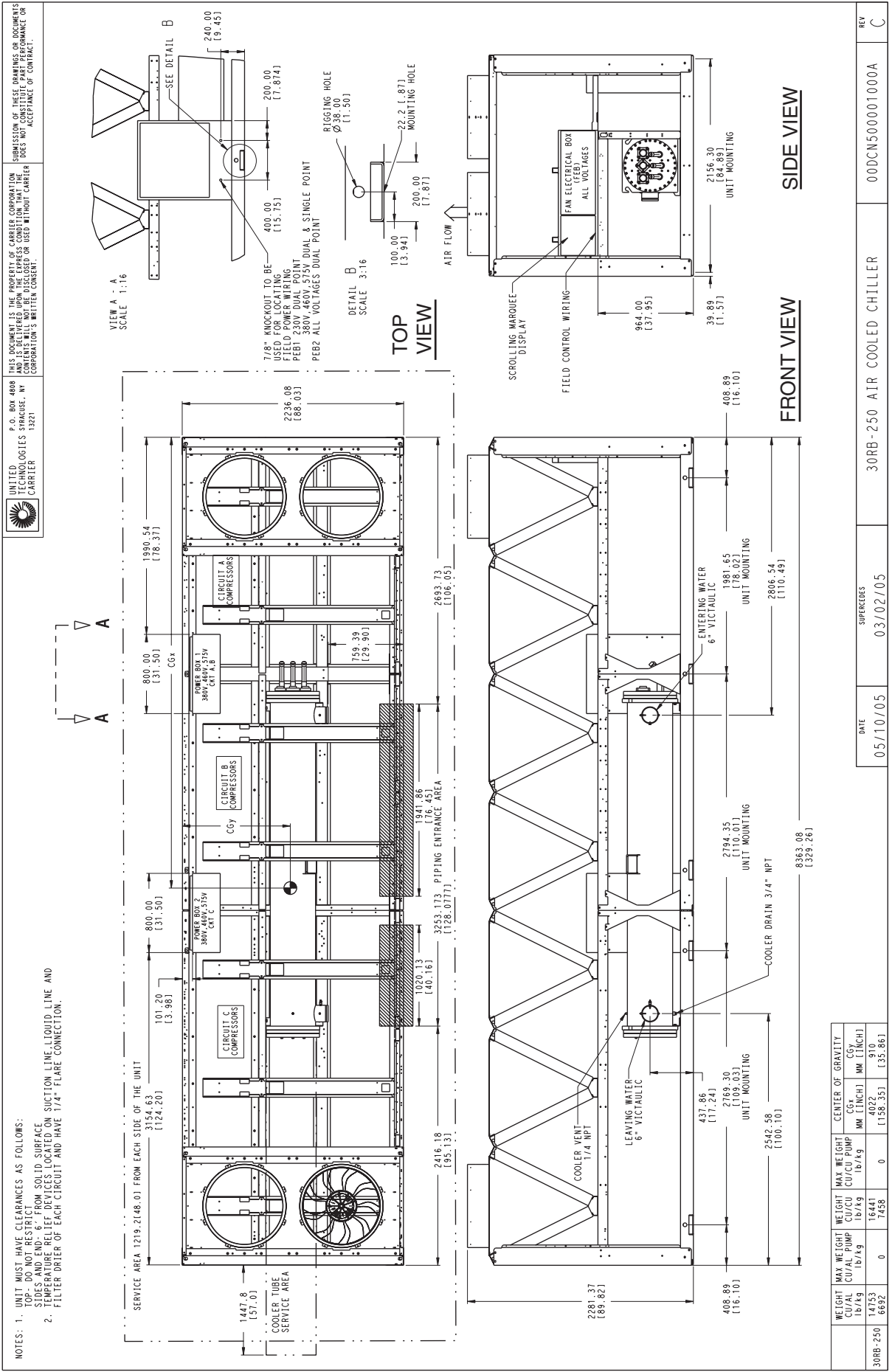
WEIGHT	WEIGHT	CENTER OF GRAVITY	
LB/LB	KG/KG	CG (IN/IN)	CG (MM/CM)
1307.9	1446.6	35.28	31.71
580.5	656.2	1138.90	136.10
1335.2	1479.9	3598	905
6056	6713	1141.26	135.67

DATE	03/02/05	SUPERSEDES	11/18/04
REV	B	UNIT MOUNTING	00DCN500000900A
		30RB-210,225 AIR COOLED CHILLER	

CUT ALONG DOTTED LINE

CUT ALONG DOTTED LINE

CERTIFIED DIMENSION PRINT



UNITED TECHNOLOGIES SYRACUSE, NY 13221
CARRIER

P.O. BOX 4808
SUBMISSION OF THESE DRAWINGS OR DOCUMENTS AND IS DELIVERED UPON THE EXPRESS CONDITION THAT THE USER DOES NOT CONSTITUTE PART PERFORMANCE OR ACCEPTANCE OF CONTRACT.

REV	DESCRIPTION
C	00DCN500001000A

DATE	SUPERCEDES
05/10/05	03/02/05

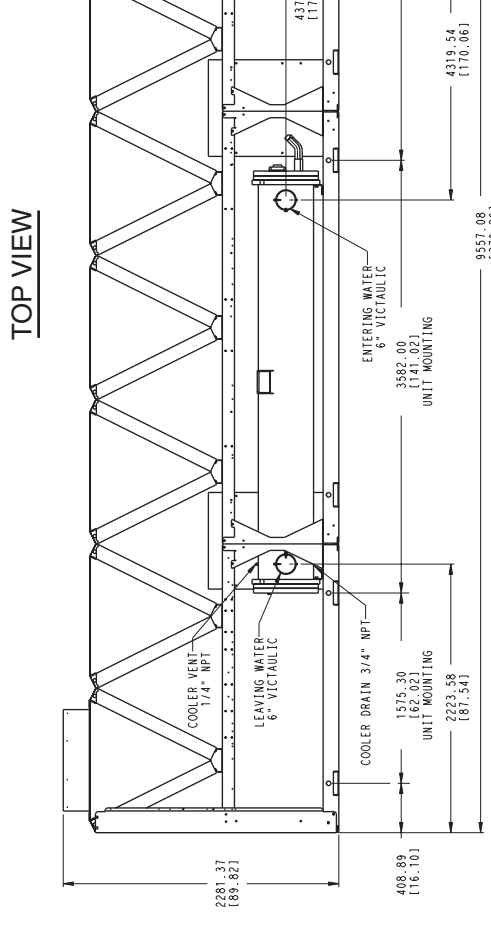
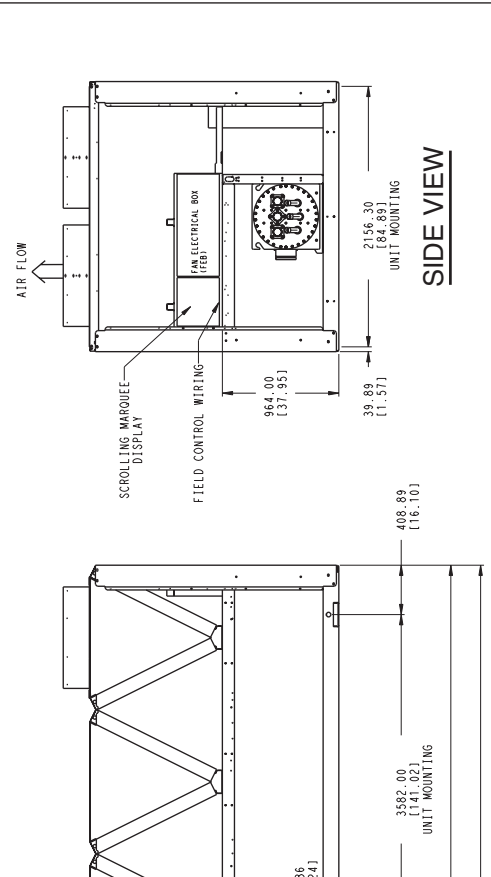
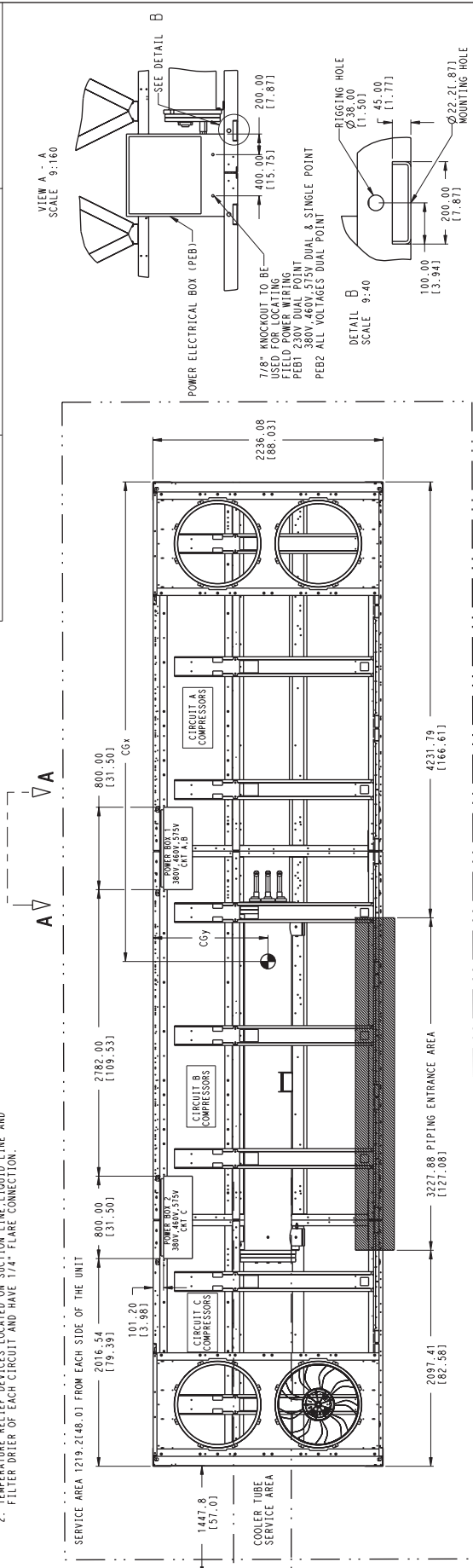
WGT	MAX WGT	WGT	MAX WGT	WGT	MAX WGT	CG	CG
CU/AL	CU/AL	CU/AL	CU/AL	CU/AL	CU/AL	MM [INCH]	MM [INCH]
14753	16441	16441	16441	16441	16441	4022	910
6692	7458	7458	7458	7458	7458	158.35	35.86

CERTIFIED DIMENSION PRINT

UNITED LOGIC TECHNOLOGIES INC. P.O. BOX 4888
 15201 W. 42ND AVENUE, SUITE 100, GOLDEN, CO 80401
 TEL: 303.440.1100 FAX: 303.440.1101
 WWW.UNITLOGIC.COM

THIS DOCUMENT IS THE PROPERTY OF UNITED LOGIC TECHNOLOGIES INC. IT IS TO BE USED FOR THE PROJECT AND NOT FOR REUSE OR REPRODUCTION IN ANY MANNER WITHOUT THE WRITTEN CONSENT OF UNITED LOGIC TECHNOLOGIES INC. SUBMISSION OF THESE DRAWINGS OR DOCUMENTS DOES NOT CONSTITUTE AN ACCEPTANCE OF CONTRACT.

NOTES: 1. UNIT MUST HAVE CLEARANCES AS FOLLOWS:
 1. DO NOT RESTRICT FLOW FROM SOLID SURFACE
 2. TEMPERATURE RELIEF DEVICES LOCATED ON SUCTION LINE, LIQUID LINE AND FILTER ORIFICE OF EACH CIRCUIT AND HAVE 1/4" FLARE CONNECTION.



WEIGHT		MAX. WEIGHT		CENTER OF GRAVITY	
CU/LAL PUMP 10/19	CU/CO PUMP 10/19	CU/LAL PUMP 10/19	CU/CO PUMP 10/19	MM (INCH)	MM (INCH)
0	0	0	0	137.22 [5.39]	465.98 [18.34]
15200	15200	8225	8225	137.22 [5.39]	465.98 [18.34]

DATE	SUPERCEDES	REV
05/10/05	03/02/05	C

30RB-275 AIR COOLED CHILLER 00DCN500001100A

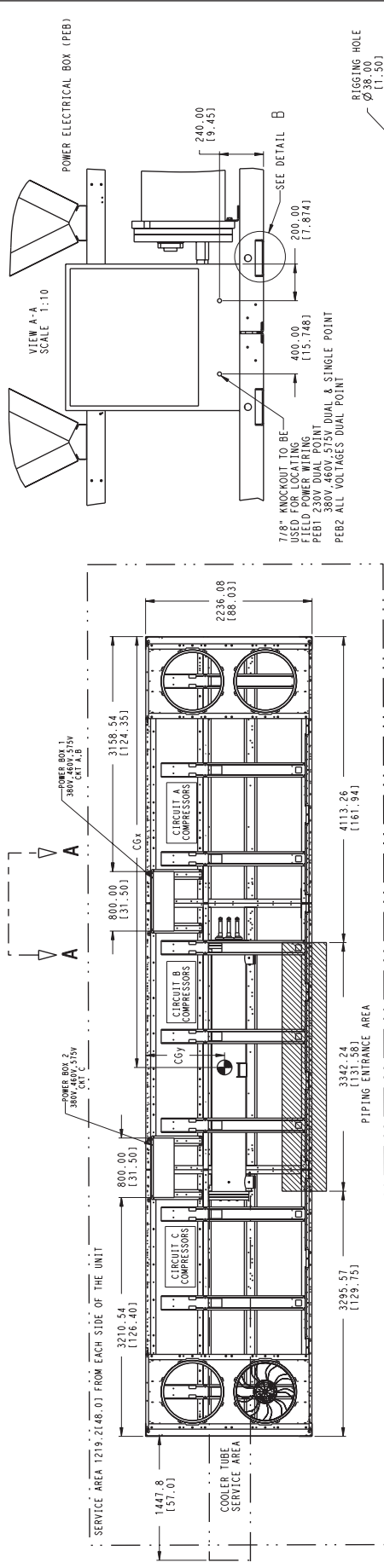
CUT ALONG DOTTED LINE

CUT ALONG DOTTED LINE

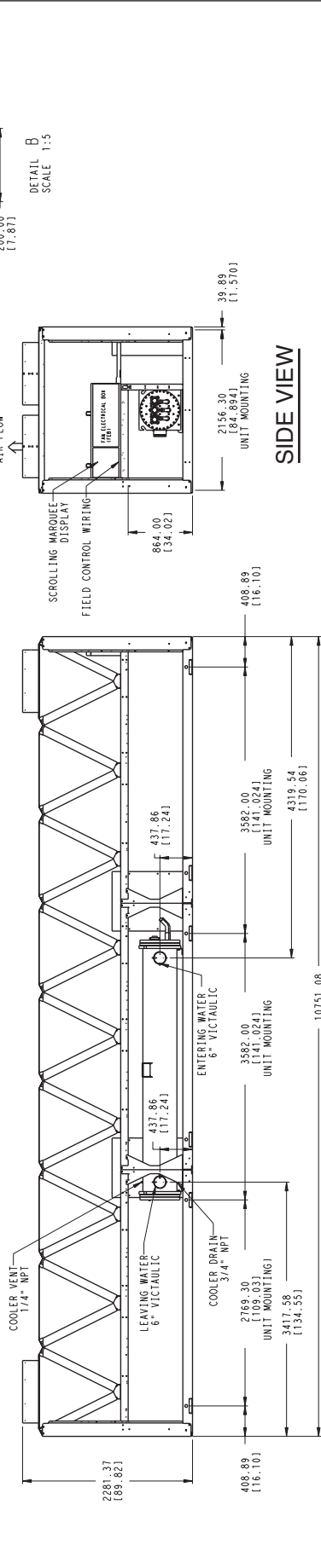
CERTIFIED DIMENSION PRINT

- NOTES: 1. UNIT MUST HAVE CLEARANCES AS FOLLOWS:
 TOP- DO NOT RESTRICT
 SIDES AND END- 6" FROM SOLID SURFACE
 2. EMERGENCY RELIEF DEVICES LOCATED ON SUCTION LINE, LIQUID LINE AND
 FILTER DRIER OF EACH CIRCUIT AND HAVE 1/4" FLARE CONNECTION.

UNITED TECHNOLOGIES STRAUSSE, NY CORPORATION'S WRITEL CONSENT
 CARRIER 13223
 P.O. BOX 4808
 THIS DOCUMENT IS THE PROPERTY OF CARRIER CORPORATION AND IS DELIVERED UNDER THE EXPRESS CONDITION THAT THE USER ASSUMES ALL LIABILITY FOR THE USE OF THIS DOCUMENT WITHOUT CARRIER CORPORATION'S WRITEL CONSENT.



TOP VIEW



FRONT VIEW

WEIGHT	MAX WEIGHT	WEIGHT	MAX WEIGHT	CENTER OF GRAVITY
CU/L	CU/L	CU/CU PUMP	CU/CU PUMP	CG
lb/kg	lb/kg	lb/kg	lb/kg	MM (INCH)
17591	19762	0	0	5317
7979	8964	0	0	[203.33]
				916
				[36.06]

DATE	DATE	DATE	DATE
05/10/05	03/02/05	00DCN500001200A	00DCN500001200A
DATE	DATE	REV	REV
05/10/05	03/02/05	C	C

30RB-300 AIR COOLED CHILLER
 SUPERCEDES
 05/10/05 03/02/05

FIELD WIRING DIAGRAM

