

Model name:

BMS-CT5120UL



Prohibited

Never connect the TOUCH SCREEN CONTROLLER for Air Conditioning Control System to the Internet.

We assume no responsibility for any problems resulting from connection to the Internet.

Only local area connection is allowed for the TOUCH SCREEN CONTROLLER for Air Conditioning Control System.

This guide describes the setting procedure for connecting the TOUCH SCREEN CONTROLLER for Air Conditioning Control System to your personal computer (abbreviated to "PC" hereinafter) via the network.

PC operation to monitor and control air conditioners is detailed in the Owner's Manual.

1. System configuration of PC

The PC to be connected must meet the following system configuration conditions so that the TOUCH SCREEN CONTROLLER for Air Conditioning Control System operates normally.

<Operating system>

- Microsoft Windows 8.1

<Hardware>

- Screen resolution 1366 × 768 pixels or more

<Browser>

- Internet Explorer 11

2. Connecting LAN cable

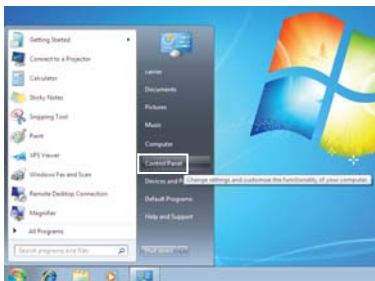
Connect the LAN cable to the LAN1 connector on the TOUCH SCREEN CONTROLLER.

3. Client PC settings

3-1. Setting IP address

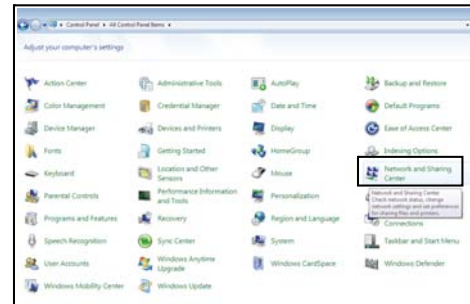
- 1) Log on to the system with the PC administrator's account.
- 2) Click [Start] -> [Control Panel]. (Fig.1)

Fig.1



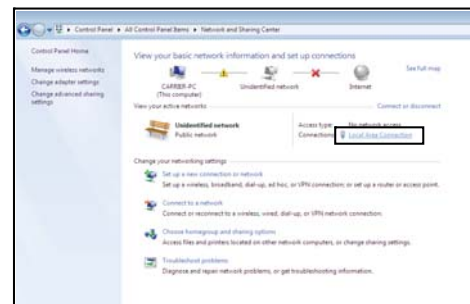
- 3) Click [Network and Sharing Center]. (Fig.2)

Fig.2



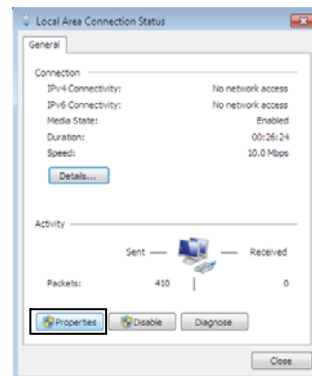
- 4) Click "Local Area Connection" of View your active networks. (Fig.3)

Fig.3



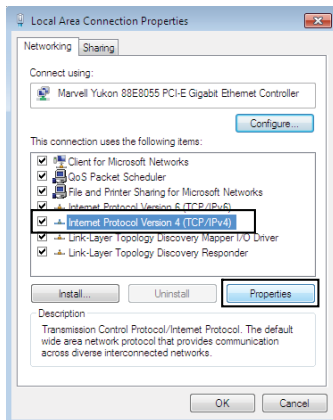
- 5) Click [Properties] in the Local Area Connection Status window. (Fig.4)

Fig.4



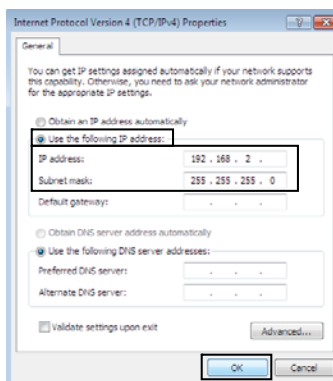
- 6) Select the “Internet Protocol Version 4 (TCP/IPv4)” checkbox, and click [Properties]. (Fig.5)

Fig.5



- 7) Select the “Use the following IP address:” radio button, and set as follows:
IP address: 192.168.2.*** (***: Excluding 80)
Subnet mask: 255.255.255.0.
Then click [OK]. (Fig.6)

Fig.6

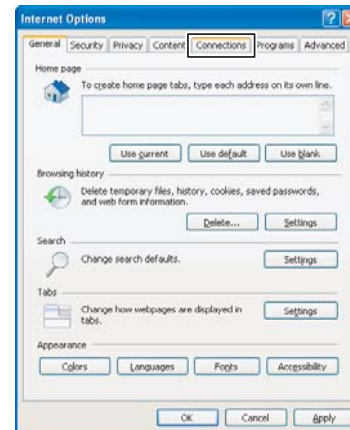


- 8) Close all the windows.

3-2. Setting browser <Internet Explorer>

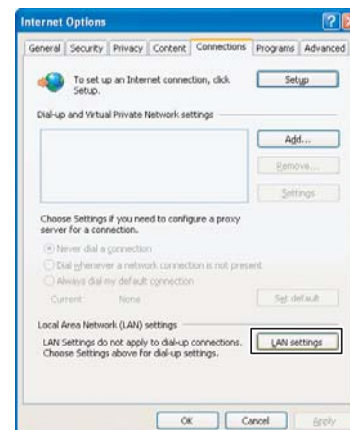
- 1) Start Internet Explorer.
- 2) Click the [Tools] button.
- 3) Choose “Internet Options” from the pull-down menu.
- 4) Click the “Connections” tab. (Fig.1)

Fig.1



- 5) Click [LAN settings]. (Fig.2)

Fig.2



- 6) Clear the “Use a proxy server for your LAN” checkbox (Fig.3) or select the “Bypass proxy server for local addresses” checkbox (Fig.4), and then click [Advanced].

Fig.3

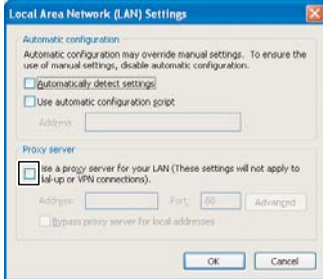
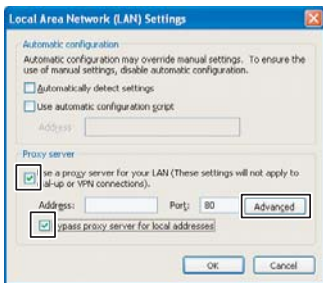
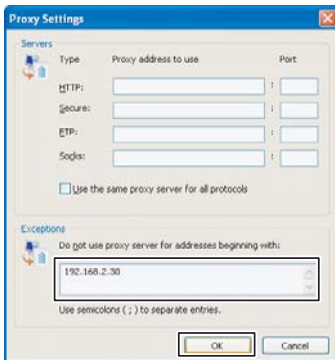


Fig.4



Add “192.168.2.80” to the “Do not use proxy server for addresses beginning with:” field. (Fig.5)

Fig.5



- 7) Select a URL by language and type it into the address bar to connect to the TOUCH SCREEN CONTROLLER for Air Conditioning Control System (Web type air conditioning control system).

Table 1

English	http://192.168.2.80/amtc_web/logon/en-US
French	http://192.168.2.80/amtc_web/logon/fr-FR
Spanish	http://192.168.2.80/amtc_web/logon/es-ES

TOSHIBA CARRIER CORPORATION
336 TADEHARA, FUJI-SHI, SHIZUOKA-KEN 416-8521 JAPAN

EH99570501(EN)