

TOSHIBA

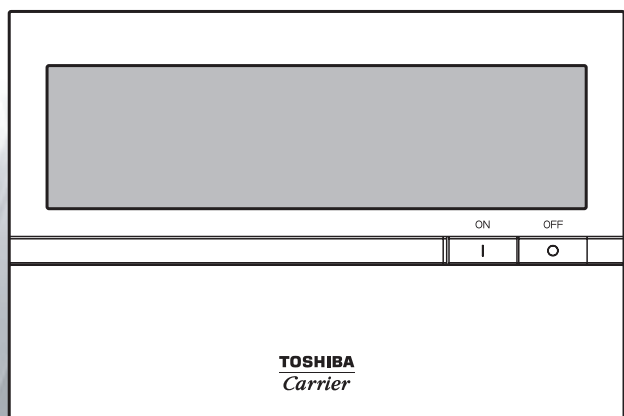
Carrier


SMART MANAGER

Network Configuration Guide

Model name:

BMS-SM1280HTLUL



 **Never connect the Smart Manager to the Internet.**
 We assume no responsibility for any problems resulting from connection to the Internet.
 Only local area connection is allowed for the Smart Manager.

This guide describes the setting procedure for connecting the Smart Manager to your personal computer (abbreviated to “PC” hereinafter) via the network.
PC operation to monitor and control air conditioners is detailed in the Owner’s Manual (Web Version).

1. System Configuration of PC

The PC to be connected must meet the following system configuration conditions so that the Smart Manager operates normally.

<Operating system>

- Microsoft Windows XP
- Microsoft Windows Vista
- Microsoft Windows 7

<Hardware>

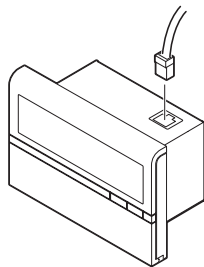
- Screen resolution 1024 × 768 pixels or more

<Browser>

- Firefox 2.0, 3.0, 3.5 or 3.6
- Internet Explorer 7.0 or 8.0

2. Connecting LAN Cable

Connect the LAN cable to the connector on the top of the Smart Manager.

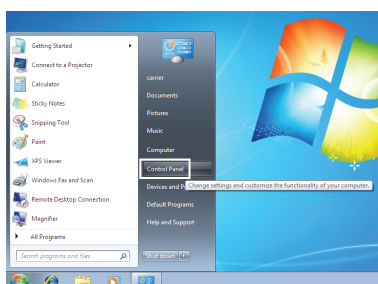


3. Client PC Settings

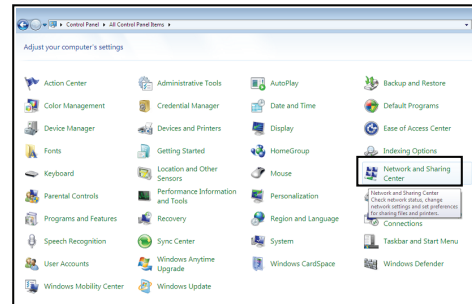
3-1. Setting IP Address

- 1) Log on to the system with the PC administrator’s account.
- 2) Click [Start] -> [Control Panel]. (Fig.1)

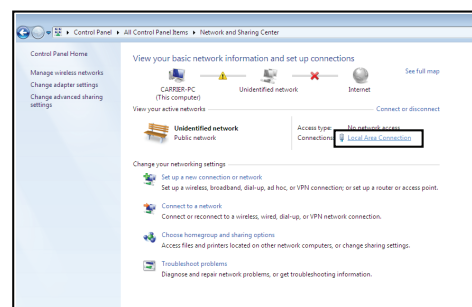
Fig.1



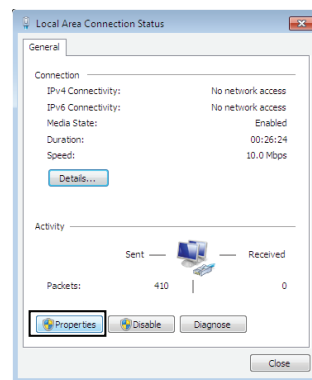
- 3) Click [Network and Sharing Center]. (Fig.2)
Fig.2



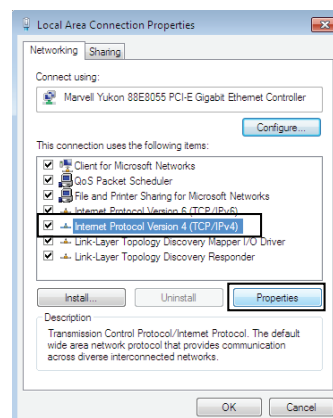
- 4) Click “Local Area Connection” of View your active networks. (Fig.3)
Fig.3



- 5) Click [Properties] in the Local Area Connection Status window. (Fig.4)
Fig.4

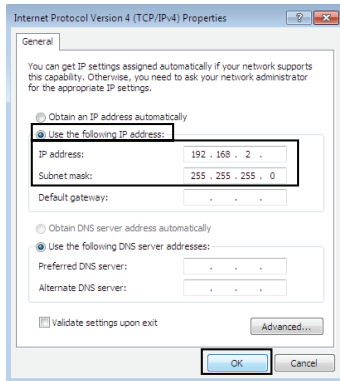


- 6) Select the “Internet Protocol Version 4 (TCP/IPv4)” checkbox, and click [Properties]. (Fig.5)
Fig.5



- 7) Select the “Use the following IP address:” radio button, and set as follows:
 IP address: 192.168.2.*** (***: Excluding 30)
 Subnet mask: 255.255.255.0.
 Then click [OK]. (Fig.6)

Fig.6



- 8) Close all the windows.

3-2. Setting Browser <Internet Explorer>

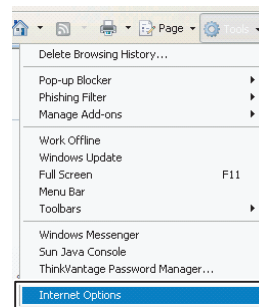
- 1) Start Internet Explorer.
- 2) Click [Tools] on the toolbar. (Fig.1)

Fig.1



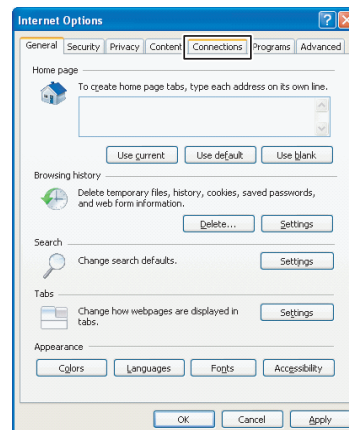
- 3) Choose “Internet Options” from the pull-down menu. (Fig.2)

Fig.2



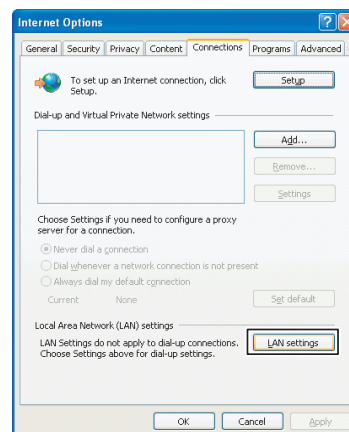
- 4) Click the “Connections” tab. (Fig.3)

Fig.3



- 5) Click [LAN settings]. (Fig.4)

Fig.4



- 6) Clear the “Use a proxy server for your LAN” checkbox (Fig.5) or select the “Bypass proxy server for local addresses” checkbox (Fig.6), and then click [Advanced].

Fig.5

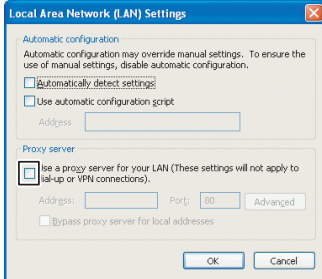
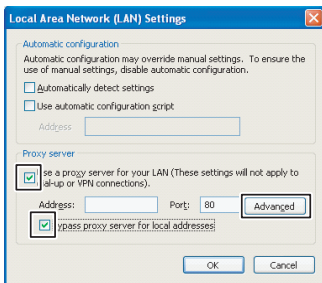
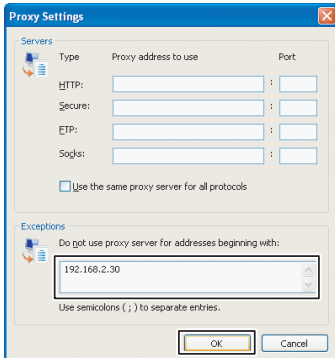


Fig.6



Add “192.168.2.30” to the “Do not use proxy server for addresses beginning with:” field. (Fig.7)

Fig.7



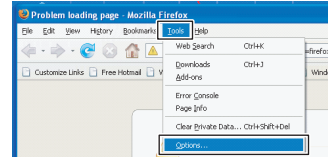
- 7) Select a URL by language and type it into the address bar to connect to the Smart Manager (Web type air conditioning control system). Table 1

English	http://192.168.2.30/en/index.html
German	http://192.168.2.30/de/index.html
Italian	http://192.168.2.30/it/index.html
French	http://192.168.2.30/fr/index.html
Spanish	http://192.168.2.30/es/index.html
Chinese	http://192.168.2.30/cn/index.html

<Firefox>

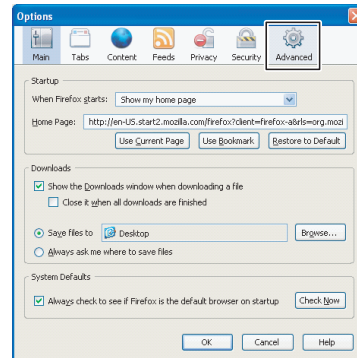
- 1) Start Firefox.
- 2) Click [Tools] and choose “Options” from the pull-down menu. (Fig.1)

Fig.1



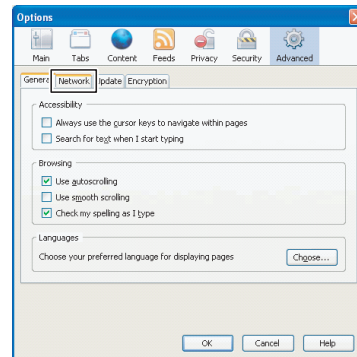
- 3) Click [Advanced]. (Fig.2)

Fig.2



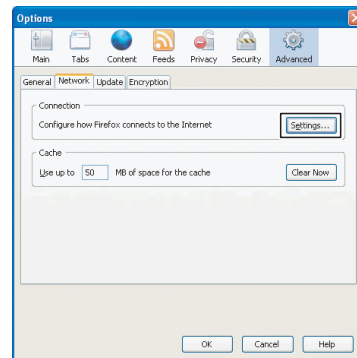
- 4) Click the “Network” tab. (Fig.3)

Fig.3



- 5) Click [Settings]. (Fig.4)

Fig.4



Select the “No proxy” checkbox (Fig.5) or the “Manual proxy configuration:” checkbox, and then add “192.168.2.30” to the “No Proxy for:” field in the Connection Settings window. (Fig.6)

Fig.5

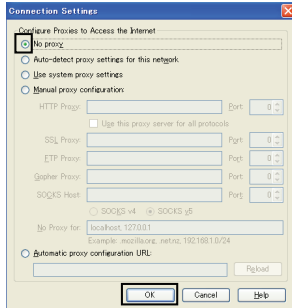
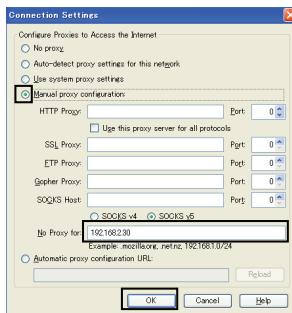


Fig.6



- 6) Select a URL by language and type it into the address bar to connect to the Smart Manager (Web type air conditioning control system).

Table 1







English	http://192.168.2.30/en/index.html
German	http://192.168.2.30/de/index.html
Italian	http://192.168.2.30/it/index.html
French	http://192.168.2.30/fr/index.html
Spanish	http://192.168.2.30/es/index.html
Chinese	http://192.168.2.30/cn/index.html

4. Displaying and Changing IP address of the Smart Manager

IP address, subnet mask, default gateway, and address setting of the Smart Manager can be displayed and changed using the following procedures (CODE No. settings).









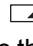



CODE No.	Item	Data	
		Factory setting	Setting range
10	IP address (MSB)	192	0 to 255
11	IP address	168	0 to 255
12	IP address	2	0 to 255
13	IP address (LSB)	30	0 to 255
14	Subnet mask (MSB)	255	0 to 255
15	Subnet mask	255	0 to 255
16	Subnet mask	255	0 to 255
17	Subnet mask (LSB)	0	0 to 255
18	Default gateway (MSB)	0	0 to 255
19	Default gateway	0	0 to 255
1A	Default gateway	0	0 to 255
1B	Default gateway (LSB)	0	0 to 255
1C	Address setting	0	0: Display only 1: Manual setting

4-1. Displaying IP address

- Change the mode to the CODE No. setting change mode.
Press the  (CHECK),  (CL), and ZONE  buttons simultaneously for at least 4 seconds.
(**SETTING** and CODE No. flash.)
- Select the CODE No. for IP address.
 - Change the CODE No. to "10" to "1B" with the SET TEMP.  or  button.
 - The address of each item is displayed as setup data.
- Press the  (CHECK) button to finish the IP address display.


4-2. Changing IP address

The following procedure describes how to change an IP address using an example of changing IP address to 192.168.2.38.

- Change the mode to the CODE No. setting change mode.
Press the  (CHECK),  (CL), and ZONE  buttons simultaneously for at least 4 seconds.
(**SETTING** and CODE No. flash.)
- Set the data of the CODE No..
 - Change the CODE No. to "1C" with the SET TEMP.  or  button.
 - Change the set data to "1" with the GROUP  or  button.
(**SETTING** and CODE No. are still flashing.)
 - Press the  (SET) button to determine the data. (**SETTING** and CODE No. change to lighting.)
 - Change the CODE No. to "13" with the SET TEMP.  or  button.
 - Change the set data to "38" with the GROUP  or  button.

NOTE)

At this time, the entered data of the selected CODE No. has not been saved yet.

- Exit the CODE No. setting change mode.
Press the  (CHECK) button to write the updated data in the memory of the Smart Manager.
* When the data has completely been written in the memory, the CODE No. setting change mode is exited.
- Press the Reset button to restart the Smart Manager.
* IP address is set during the restart process.

When the IP address of the Smart Manager has been changed, be sure to change the IP address of the client PC to the address in the same segment. Also change the setting of the browser to the IP address of the Smart Manager.

Air Conditioning Control System
Network Configuration Guide
(For Smart Manager)

Jan, 2011

©Copyright Toshiba Carrier Corporation
2004-2011

TOSHIBA CARRIER CORPORATION
336 TADEHARA, FUJI-SHI, SHIZUOKA-KEN 416-8521 JAPAN