



i-Vu® Building Automation System i-Vu® System Touch

Part Number: SYST1-4-CAR



Carrier's i-Vu System Touch is an integrated component of the i-Vu Building Automation System. It features an illuminated, 4.3" color pixel touchscreen display and connects directly to a network of Open (BACnet MS/TP), controllers. Designed for wall mounting, it provides building occupants, facility managers, and installers a powerful user interface for managing all of the equipment in a building.

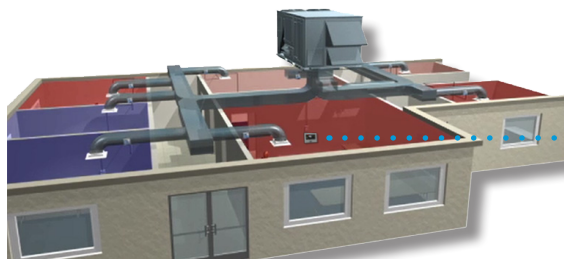


Hardware Features

- Illuminated 4.3", 480 x 272 color pixel touchscreen display (no buttons)
- Built-in temperature and humidity sensing
- Supports remote thermistor sensor (such as Carrier T55)
- Connects directly to one Carrier Open (BACnet MS/TP) network and manages up to 60 Open controllers through a single touchscreen
- Intuitive icon-driven / website-like screen navigation
- Default system screens such as scheduling and trends support international languages
- Ideal for multi-zone commercial applications such as office buildings and retail stores

For Building Occupants

- View current space temperature
- View operating mode (heat/cool/economizer)
- Change setpoints easily
- Initiate timed local overrides



¹For a complete list of controllers that include i-Vu Touch files, visit www.HVACPartners.com.

For Facility Managers

- Multi-level password protection for security
- Home screen shows temperatures and colors for all equipment in the building within a single view
- Convenient "Snapshot" screens show graphic and status for each piece of equipment in the building
- Manage schedules, trends, alarms, and configuration for all equipment in the system
- Configure individual and group schedules easily
- View, acknowledge, and delete system alarms from a single screen; audible indicator for all alarms

For Installers

- Simple 4-wire installation
- Auto-discovers all Open controllers on the BACnet MS/TP network
- Screen files can be auto-uploaded on select controllers¹, customized, or created from scratch
- Create customized screen files for navigating the entire system
- Startup wizard and integrated help screens to assist with equipment start-up & commissioning



Rooftop Status



Zone Status



System Status

i-Vu® Building Automation System

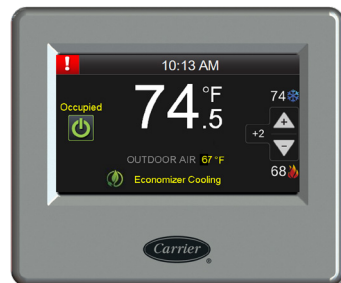
i-Vu® System Touch

Part Number: SYST1-4-CAR



Specifications

Power	24 Vac (±15%), 5 VA, 50-60 Hz, Class 2		
Display	4.3 in. resistive touchscreen color LCD display with backlighting, 480x272 pixels		
Communication Ports	BACnet MS/TP: 2-wire EIA-485 port for connection to the Open controller network Sensor: for connecting an optional remote thermistor sensor (like Carrier T55) USB port: for firmware upgrades		
Real-Time Clock	A 365-day real time clock/calendar. Time and date will be maintained for a minimum of 72 hours after loss of power (at room temperature).		
Audible Alarm Notification	A piezoelectric sounder		
Temperature Sensor	Range: -4°F to 140°F (-20°C to 60°C) Accuracy over 30°F to 100°F (-1°C to 38°C): ±1.0°F (±0.55°C) Accuracy over full range: ±2.0°F (±1.1°C) Resolution: 0.2°F (0.1°C)		
Humidity Sensor	Range: 0 to 100% RH Accuracy over 20 to 80% RH: ±3.0% RH Accuracy over full range: ±5.0% RH Resolution: 0.05% RH		
Environmental Operating Range	-4°F to 140°F (-20°C to 60°C), 10-90% RH, non-condensing		
Mounting	Mounting plate included for mounting to wall or electrical junction box		
Dimensions	Overall Width: 5.44 in. (13.82 cm) Height: 4.55 in. (11.56 cm) Depth: 1.24 in. (3.15 cm)	Mounting Plate Width: 4.79 in. (12.2 cm) Height: 3.94 in. (10 cm)	Display Only Width: 3.75 in. (9.5 cm) Height: 2.25 in. (5.7 cm)
Weight	8 oz. (0.23 kg)		
Listed By	UL-916 (PAZX), CE, FCC Part 15-Subpart B-Class A		



Home Screen



Schedules Screen



Start-up Wizard

