



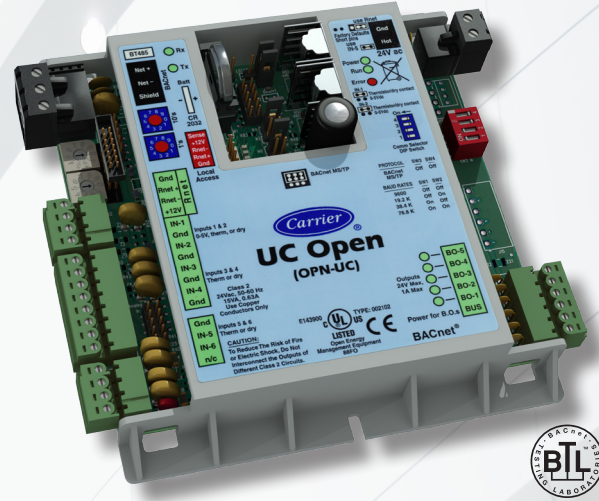
# i-Vu® Building Automation System UC Open Controller

Part Number: OPN-UC



*The i-Vu® Building Automation System provides everything you need to access, manage, and control your building, including the powerful i-Vu user interface, plug-and-play BACnet controllers, and state-of-the-art Carrier equipment.*

The UC Open controller provides auxiliary building control to interface with lighting, fans, pumps, and other HVAC equipment. The UC Open's factory-engineered control programs provide simple building integration for commercial applications with 11 I/O point capability.



## Application Features

- Comprehensive library of factory-engineered control programs available, including: Pump Control, Lighting Control, Time Scheduling with/without Override, Analog Temperature Control, Discrete & Permissive Interlock, Discrete Staging Control, OA Conditions, BTU Metering, Fuel Oil Metering, Electric Metering, Gas Metering, and Water Metering
- Supports Snap graphical programming for creating customized control programs
- Supports Carrier communicating room sensors, which allow for local setpoint adjustment and local overrides

## Hardware Features

- Real time-clock keeps time in the event of power failure
- Stand-alone control of up to 11 I/O points using proven algorithms
- Native BACnet MS/TP or ARCNET communications

## System Benefits

- Fully plug-and-play with the Carrier i-Vu Building Automation System
- Supports demand limiting for maximum energy savings

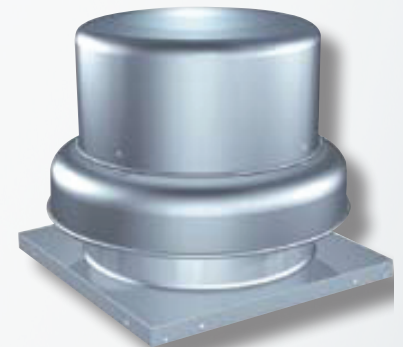
## Sample Applications



Electric Meter



Lighting



Exhaust Fans



# i-Vu® Building Automation System UC Open Controller

Part Number: OPN-UC

<b>BACnet Support</b>	Advanced Application Controller (B-AAC), as defined in BACnet 135-2001 Annex L
<b>Communication Ports</b>	<b>BACnet port:</b> EIA-485 port for BACnet MS/TP communications (9600 bps, 19.2 kbps, 38.4 kbps, & 76.8 kbps) or ARCNET 156 kbps; <b>Local Access port:</b> For system start-up and troubleshooting (115.2 kbps); <b>Rnet port:</b> For connecting Carrier communicating room sensors and Carrier's touchscreen user interface
<b>Inputs</b>	<b>6 inputs:</b> Configurable for thermistor or dry contact. Inputs 1 and 2 are also configurable for 0-5 VDC sensors. AI's have 12 bit A/D resolution.
<b>Outputs</b>	<b>5 binary outputs:</b> Relay contacts rated at 1 A max. @ 24 VAC/VDC, configured normally open
<b>Protection</b>	Incoming power and network connections are protected by non-replaceable internal solid-state polyswitches that reset themselves when the condition that causes a fault returns to normal. The power, network, input, and output connections are also protected against voltage transient and surge events.
<b>Real Time Clock</b>	Battery-backed real time clock keeps track of time in event of power failure
<b>Battery</b>	10-year Lithium CR2032 battery provides a minimum of 10,000 hours of trend data & time retention during power outages
<b>Status Indicators</b>	LED status indicators for communications, run status, error, and power
<b>Controller Addressing</b>	Rotary DIP switches set BACnet MS/TP or ARCNET address of controller
<b>Listed by</b>	UL-916 (PAZX), cUL-916 (PAZX7), FCC Part 15- Subpart B-Class A, CE EN50082-1997
<b>Environmental Operating Range</b>	<b>Operating:</b> 0 to 140°F (-18 to 54°C), 10-90% relative humidity, non-condensing <b>Storage:</b> -24 to 140°F (-30 to 60°C), 10-90% relative humidity, non-condensing
<b>Power Requirements</b>	24VAC ± 10%, 50-60Hz 18 VA power consumption 26VDC (25V min, 30V max) Single Class 2 source only, 100 VA or less

## Dimensions

### Overall

**A:** 5-5/8" (14.3cm)

**B:** 5-1/8" (13 cm)

### Mounting

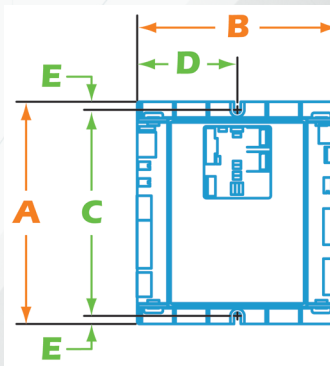
**C:** 5-1/4" (13.3 cm)

**D:** 2-9/16" (6.5 cm)

**E:** 3/16" (.5 cm)

**Depth:** 2" (5.1 cm)

**Weight:** .44 lbs. (0.20 kg)



**CONTROLS EXPERT**

Tested. Certified. Factory Authorized.

**For more information, contact  
your local Carrier Controls Expert.**

Controls Expert Locator:  
[www.carrier.com/controls-experts](http://www.carrier.com/controls-experts)

© Carrier Corporation 2018 Cat. No. 11-808-472-01 Rev. 05/18  
Manufacturer reserves the right to discontinue, or change at any time, specifications or designs, without notice and without incurring obligations. Trademarks are properties of their respective companies and are hereby acknowledged.