



i-Vu® Building Automation System ZS Duct Sensors



The i-Vu® Building Automation System provides everything you need to access, manage, and control your building, including the powerful i-Vu user interface, plug-and-play BACnet controllers, and state-of-the-art Carrier equipment.

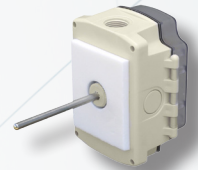
The Carrier line of communicating ZS duct sensors are designed to measure the air temperature and/or humidity in ductwork. All duct sensors feature closed cell foam to seal the insertion hole and to absorb vibration. Mounting tabs allow for easy installation onto the wall of the duct. The units are built to withstand high humidity and condensation environments.

The ZS duct sensors connect directly to the dedicated sensor network (Rnet) of a Carrier i-Vu controller. This communicating sensor network supports up to 15 ZS sensors through a single port, eliminating the need to consume multiple inputs on the controller.

The communicating ZS duct sensors are available in different models, including temperature only, temperature plus humidity, and temperature averaging.



ZS Duct
Temperature Sensor



back mount



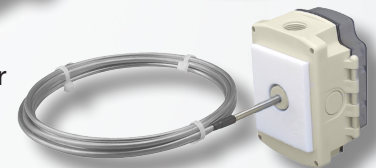
ZS Duct
Temp + Humidity Sensor



back mount



ZS Duct
Averaging Sensor



back mount

Part # (Back Mounting)	Part # (Bottom Mounting)	Description	Sensing	Probe Length
ZSD-B-4-6-B	ZSD-S-4-6-B	ZS Duct, Temp Only, 4" probe	Temp	4" (inches)
ZSD-B-8-6-B	ZSD-S-8-6-B	ZS Duct, Temp Only, 8" probe	Temp	8" (inches)
ZSD-BH-6-6-B	ZSD-SH-6-6-B	ZS Duct, Temp + Humidity	Temp/Humidity	6" standard
ZSA-B-8-6-B	ZSA-S-8-6-B	ZS Averaging, 8' probe	Temp	8' (feet)
ZSA-B-12-6-B	ZSA-S-12-6-B	ZS Averaging, 12' probe	Temp	12' (feet)
ZSA-B-24-6-B	ZSA-S-24-6-B	ZS Averaging, 24' probe	Temp	24' (feet)



i-Vu® Building Automation System ZS Duct Sensors

Specifications

Sensing element

Temperature	Range	20° to 120°F (-5° to 50°C):
	Accuracy:	±0.36°F (0.2°C)
Humidity	Range:	10% to 90%
	Accuracy:	Humidity is calibrated at 73°F (23°C) ±2.0% typical. Less than 0.5% drift per year.

Sensor

Temperature	Range:	20° to 120°F (-5° to 50°C)
	Accuracy:	±0.9°F (0.5°C)
Humidity	Range:	10% to 90%
	Accuracy:	Humidity is calibrated at 73°F (23°C). ±2.0% typical. Less than 0.5% drift per year.

Enclosure material Polycarbonate, UL94V-0

Enclosure rating NEMA 4, IP66, UV rated

Enclosure dimensions
 Width: 5 in. (12.7 cm)
 Height: 4.15 in. (10.54 cm)
 Depth: 2.5 in. (6.35 cm)

- Probe**
- Temperature sensor probe: 304 SS / 0.25 in. (0.64 cm) diameter / Length (4 or 8 in.) specified at time of order
 - Temperature/humidity sensor probe: ABS with SS filter / 1.0 in. (2.5 cm) diameter / 6 in. (13.5 cm) length
 - Averaging temperature sensor probe: Bendable aluminum / 3/16 in. diameter / Length of 8, 12, or 24 ft. specified at time of order

Power requirements 12 Vdc @ 6 mA

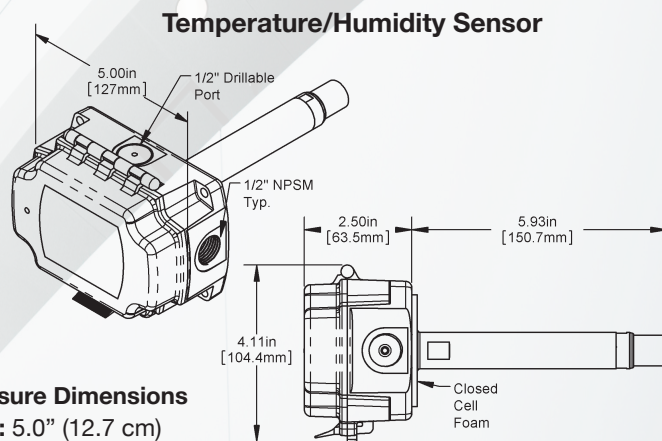
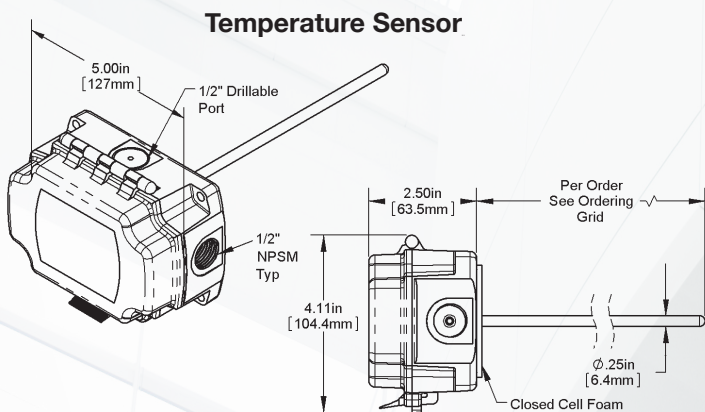
Power supply The 4-conductor Rnet cable from a controller supplies +12 Vdc @ 210 mA. For additional power, use an external power supply. Use the above power requirements to calculate the size of the external power supply. The controller and the external power supply must share a common ground.

Communication 115 kbps

Environmental operating range -40 to 158°F (-40 to 70°C)

Mounting Duct mount with #8 sheet metal screws

Listed by FCC Part 15-Subpart B-Class B, CE



Enclosure Dimensions
Width: 5.0" (12.7 cm)
Height: 4.15" (10.54 cm)
Depth: 2.5" (6.35 cm)



CONTROLS EXPERT

Tested. Certified. Factory Authorized.

**For more information, contact
 your local Carrier Controls Expert.**
 Controls Expert Locator:
www.carrier.com/controls-experts

© Carrier Corporation 2017 Cat. No. 11-808-605-01 06/17
 Manufacturer reserves the right to discontinue, or change at any time, specifications or designs, without notice and without incurring obligations. Trademarks are properties of their respective companies and are hereby acknowledged.