


# Installation Instructions

Read these instructions completely before attempting to install the Economizer Relay Accessory.

## SAFETY CONSIDERATIONS

Installation and servicing of this equipment can be hazardous due to mechanical and electrical components. Only trained and qualified personnel should install, repair, or service this equipment. Untrained personnel can perform basic maintenance functions such as cleaning and replacing air filters. All other operations must be performed by trained service personnel. When working on this equipment, observe precautions in the literature, on tags, and on labels attached to or shipped with the unit and other safety precautions that may apply.

Follow all safety codes. Installation must be in compliance with local and national building codes. Wear safety glasses, protective clothing, and work gloves. Have fire extinguisher available. Read these instructions thoroughly and follow all warnings or cautions included in literature and attached to the unit.

Recognize safety information. This is the safety alert symbol . When you see this symbol on the unit and in instructions or manuals, be alert to the potential for personal injury. Understand these words: DANGER, WARNING, and CAUTION. These words are used with the safety alert symbol. DANGER identifies the most serious hazards with **will** result in severe personal injury or death. WARNING signifies hazards which **could** result in personal injury or death. CAUTION is used to identify unsafe practices which **may** result in minor personal injury or product and property damage. NOTE is used to highlight suggestions which **will** result in enhanced installation, reliability, or operation.

Consult local building codes, the current editions of the National Fuel Gas Code (NFPA) NFPA 54/ANSI Z223.1, and the National Electrical Code (NEC) NFPA 70.

In Canada refer to the current editions of the National Standards of Canada CAN/CSA-B149.1 and .2 Natural Gas and Propane Installation codes, and Canadian Electrical Code CSA C22.1

## CAUTION

### UNIT PERFORMANCE AND COMPONENT HAZARD

Failure to follow this caution may result in unit damage.

For cooling operation, the recommended airflow is 350 to 450 cfm for each 12,000 Btuh of rated cooling capacity. For heating operation, the airflow must produce a temperature rise that falls within the range stamped on the the unit rating plate.

## GENERAL

The economizer relay kit aids with the installation of economizer kits CPECOMZR007A, CPECOMZR008A, CPECOMZR009A, CPECOMZR010A, CPECOMZR011A and CPECOMZR012A on heat pump and dual fuel units. The alternative to using this kit is to

use approved field installed relays listed in the economizer kit installation instructions.

See Table 1 for package contents.

**Table 1 – Package Contents**

DESCRIPTION	QTY
Bracket/Relays/Harness Assembly	1
1/2-in. #10 screws	2
Installation Instructions	1

## INSTALLATION

**Economizer** - See Fig. 1 for Economizer Relay Accessory installation location. To install the Economizer Relay Accessory perform the following procedure:

1. Turn off unit power supply and install lockout tag.

## WARNING

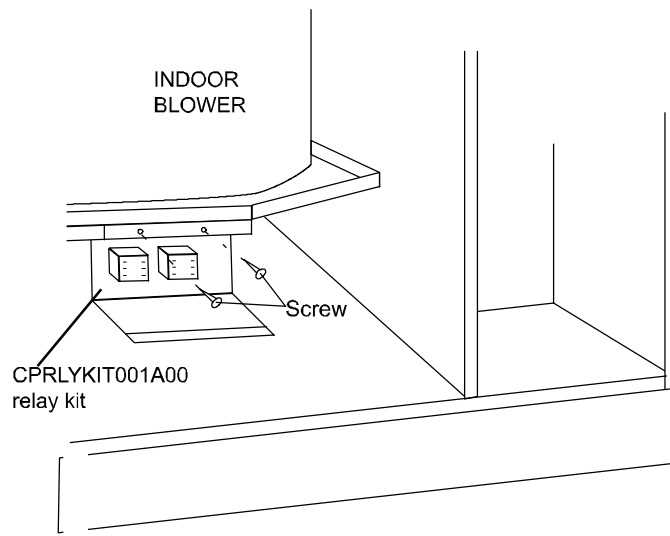
### ELECTRICAL SHOCK HAZARD

Failure to follow this warning could result in personal injury or death.

Before installing or servicing system, always turn off main power to system and install lockout tag. There may be more than one disconnect switch. Turn off accessory heater power switch if applicable.

2. Remove access panel covering both the blower and control compartments.
3. Position the bracket/relay assembly in the location shown in Fig. 1 and locate the screw holes to secure the bracket.
4. Screw bracket into the blower housing using the screws provided.
5. Connect the relay harness wiring as shown on the wiring diagram at the end of these instructions.
6. Complete installation of the Economizer Kit.
7. Replace all access panels removed from the unit.
8. Turn power back on and test unit.

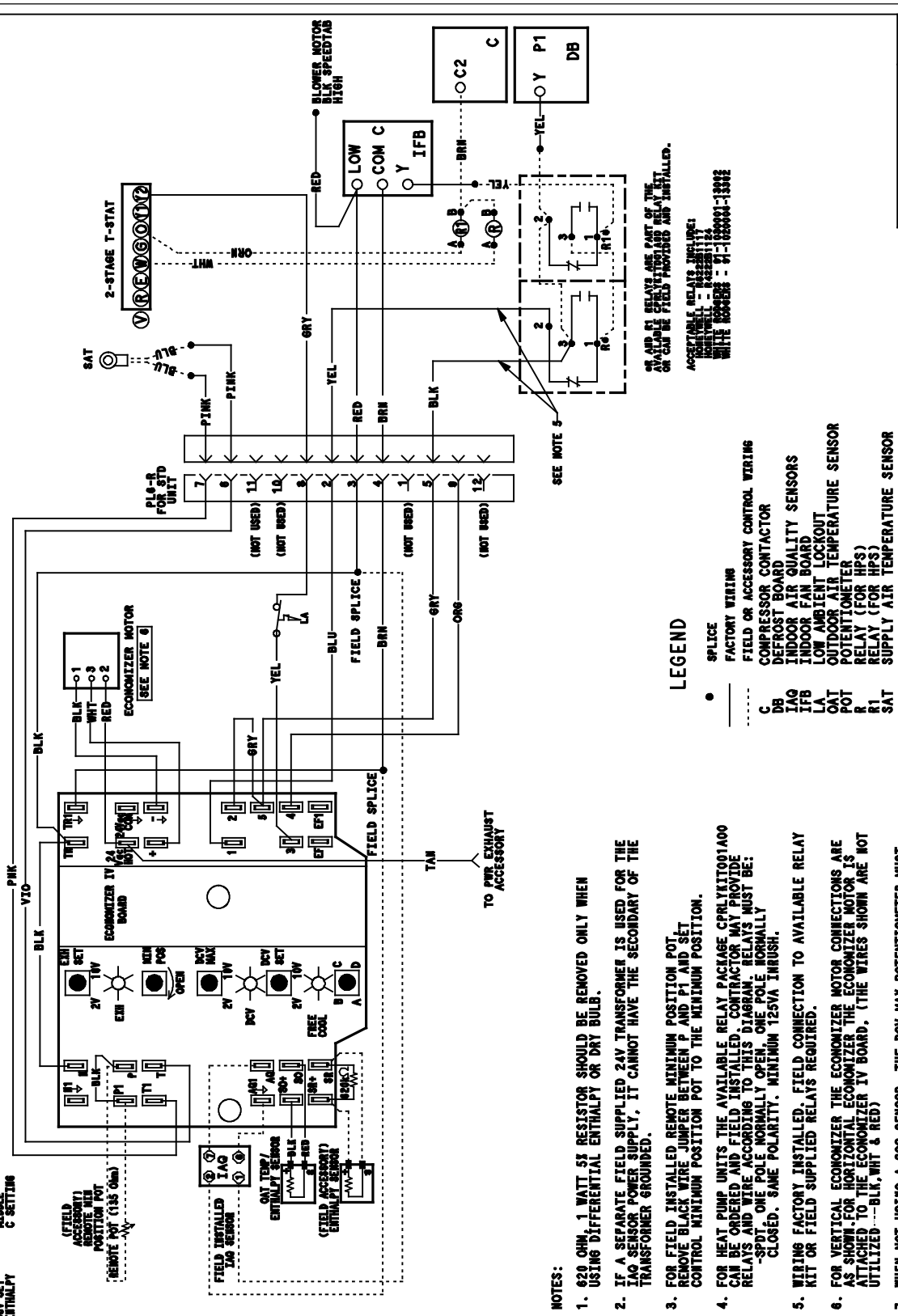
**NOTE:** Units with 3 access panels will have a quick connect junction on the yellow wire from the indoor fan control board Y terminal to the defrost control board Y terminal that can be separated so those leads can be connected into the relay wire harness.



**Fig. 1 - Position of Bracket/Relay Assembly**

A10177

# WIRING FOR HEAT PUMP AND DUAL FUEL MODELS



50SD500305 C

POTENTIOMETER DEFAULT SETTINGS:

Fig. 2 - Wiring Diagram

3

A10059

