

INSTRUCTIONS



99TA525012 C

Instruction Sheet Number: **99TA525012 C**

99TA525012 C (for RCD use only)

Description: JUMPER BAR KIT

Author: G.D.

Date: June 3, 2005

Part Number: 06EA660141

The 06EA660141 kit consists of the following items:

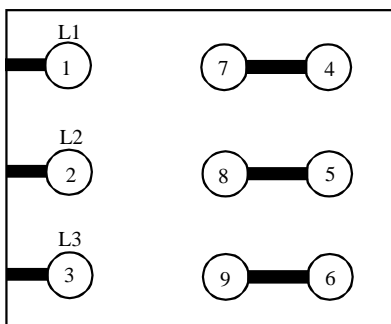
Qty	Part Number	Description
3	06EA500551	2 hole jumper bar
1	06EA502782	3 hole jumper bar
1	06LA500282	connector block
9	AT14QA241	3/8-16 hex nuts
1	06EA505294	terminal box cover label
1	99TA525012	instruction sheet

This kit is used to connect the motor terminals of the 06E multi-volt compressor. Attach the 06EA505294 label to the terminal box cover.

For 460/60 or 400/50 operation, connect jumper bars as follows:

1. Install 2 hole copper jumper bars connecting terminals 7 to 4, 8 to 5, and 9 to 6.
2. Connect line leads to terminals 1,2, and 3.
3. Install terminal nuts (included in this kit) on terminal studs to secure jumper bars/line connections. Tighten securely.

TOP

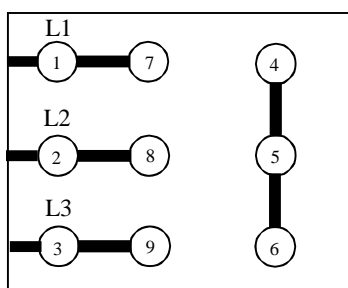


SCHEMATIC

For 208-230/60 or 200/50 XL start operations, connect jumper bars as follows:

1. Install 2 hole copper jumper bars connecting terminals 1 to 7, 2 to 8, and 3 to 9.
2. Remove plastic connector block from terminals 4,5, and 6.
3. Install flat connector block (non-conducting) on terminals 4,5, and 6.
4. Install terminal nuts on terminals 4,5, and 6.
5. Install 3 hole copper jumper bar connecting terminals 4,5, and 6.
6. Connect line leads to terminals 1,2, and 3.
7. Install terminal nuts (included in this kit) on terminal studs to secure jumper bars/line connections. Tighten securely.

TOP

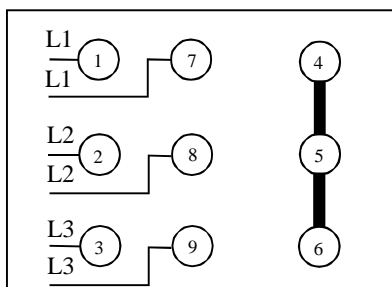


SCHEMATIC

For 208-230/60 or 200/50 PART WIND START operation or single circuit with 6 line leads, connect jumper bars as follows:

1. Remove plastic connector block from terminals 4,5, and 6.
2. Install flat connector block (non-conducting) on terminals 4,5, and 6.
3. Install terminal nuts on terminals 4,5, and 6.
4. Install 3 hole copper jumper bar connecting terminals 4,5, and 6.
5. Connect line leads to terminals 1,2,3,7,8, and 9.
6. Install terminal nuts (included in this kit) on terminal studs to secure jumper bar/line connections. Tighten securely.

TOP



SCHEMATIC