

Part Number:
CPCRKHTR002A00, CPCRKHTR003A00,
CPCRKHTR004A00, CPCRKHTR005A00,
CPCRKHTR006A00, CPCRKHTR007A00,
CPCRKHTR008A00, CPCRKHTR009A00

**SMALL PACKAGED PRODUCT
(SPP)
ACCESSORY CRANKCASE
HEATERS**

Installation Instructions


IMPORTANT: Read the entire instruction manual before starting the installation.

SAFETY CONSIDERATIONS

Improper installation adjustment, alteration, service, maintenance, or use can cause explosion, fire, electrical shock, or other conditions which may cause death, personal injury, or property damage. Consult a qualified installer, service agency, or your distributor or branch for information or assistance. The qualified installer or agency must use factory-authorized kits or accessories when modifying this product. Refer to the individual instructions packaged with the kits or accessories when installing.

Follow all safety codes. Wear safety glasses, protective clothing, and work gloves. Use quenching cloth for brazing operations. Have a fire extinguisher available. Read these instructions thoroughly and follow all warnings or cautions included in literature and attached to the unit. Consult local building codes, the current editions of the National Electrical Code (NEC) NFPA 70.

In Canada refer to the current editions of the Canadian Electrical Code CSA C22.1.

Recognize safety information. This is the safety-alert symbol . When you see this symbol on the unit and in instructions or manuals, be alert to the potential for personal injury. Understand these signal words; DANGER, WARNING, and CAUTION. These words are used with the safety-alert symbol. DANGER identifies the most serious hazards which **will** result in severe personal injury or death. WARNING signifies hazards which **could** result in personal injury or death. CAUTION is used to identify unsafe practices which **may** result in minor personal injury or product and property damage. NOTE is used to highlight suggestions which **will** result in enhanced installation, reliability, or operation.

INTRODUCTION

These instructions cover the installation of an Accessory Crankcase heater on Small Packaged Products air conditioners and heat pumps, with and without gas heating systems.

DESCRIPTION AND USAGE

The accessory crankcase heater warms the compressor crankcase oil to reduce refrigerant migration in the crankcase and ensure proper compressor lubrication.

INSTALLATION

WARNING

ELECTRICAL SHOCK HAZARD

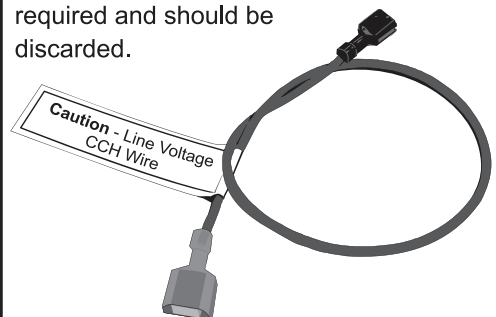
Electrical shock or explosion could cause serious injury or death.

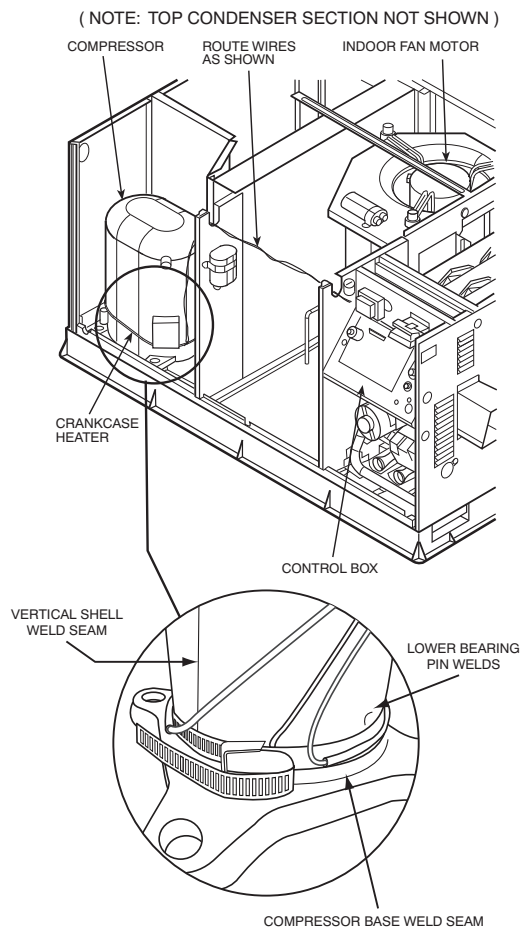
Before performing service or maintenance operations on unit, turn off the main power switch to unit and install lockout tag.

1. Turn off gas supply (if applicable) first, then disconnect electric power supply and install lockout tag.
2. Remove access panel(s) for compressor, blower, and control box (See Fig. 1).
3. Spread crankcase heater arms and wrap heater around compressor base. Above compressor mounting plate (See Fig. 1).
4. Fasten heater firmly in place with fastening lip provided with the crankcase heater (See Fig. 1).
5. Route crankcase heater leads into unit control box, following the path of the compressor leads (See Fig. 1).
6. Connect one black lead to the compressor contactor terminal 11, and connect other black lead to compressor contactor terminal 21 (See Fig. 2).
7. Attach green crankcase heater ground lead to ground screw in blower section or control box.
8. Replace access panel(s).
9. Turn on main power, then (if applicable) gas supply and remove lockout tag.

NOTICE

If one of the OEM crankcase heater leads is connected to a jumper wire, remove the jumper wire at the contactor. The jumper wire is identified by a caution label near the insulated male spade connector (see picture below). The other heater lead will be tied directly to contactor. The new replacement crankcase heater leads should be wired directly to the contactor terminals where the other leads were attached. The existing jumper wire will no longer be required and should be discarded.

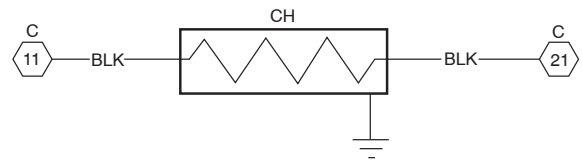




Secure heater to compressor so it straddles the compressor vertical shell weld seam and is positioned between the lower bearing pin weld and the compressor base. To avoid wire damage, bend strap away from heater wires as shown.

A10305

Fig. 1 - Typical Crankcase Heater Installation



LEGEND
C — Compressor Contactor
CH — Crankcase Heater
 Marked Terminal

C01014

Fig. 2 - Crankcase Heater Wiring