



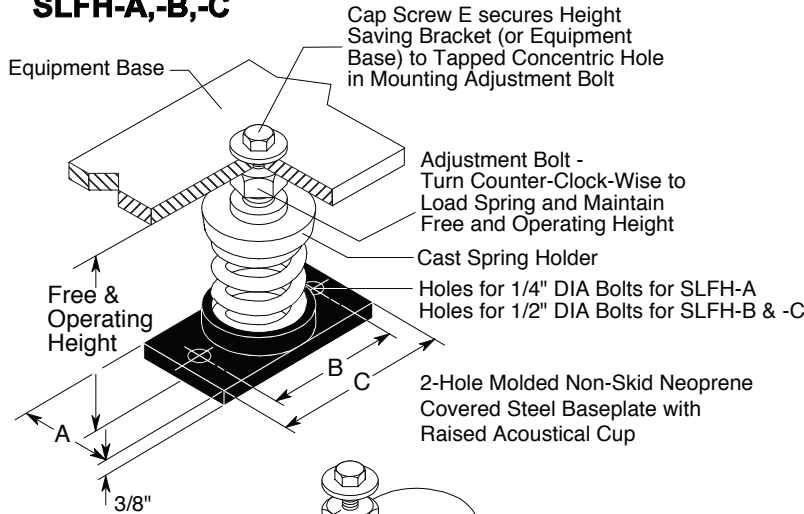
MASON INDUSTRIES, Inc.

Manufacturers of Vibration Control Products
 350 Rabro Drive 2101 W. Crescent Ave., Suite D
 Hauppauge, NY 11788 Anaheim, CA 92801
 631/348-0282 714/535-2727
 FAX 631/348-0279 FAX 714/535-5738
 Info@Mason-Ind.com Info@MasonAnaheim.com
 www.Mason-Ind.com

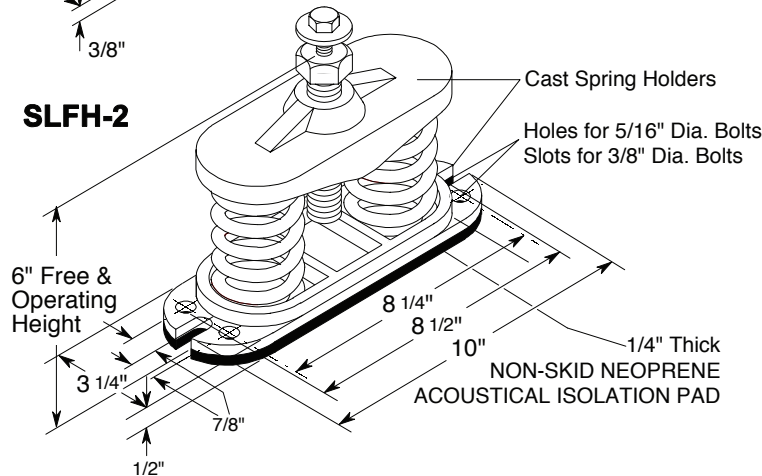
JOB NAME _____
 CUSTOMER _____
 CUSTOMER P.O. _____
 MASON M.I. _____
 DWG. NO. _____

TYPE
SLFH
 1" Deflection
 A, B, C & 2
 Series Mountings

SLFH-A,-B,-C



SLFH-2



TYPE SLFH RATINGS

Size	Rated Capacity (lbs)	Rated Defl. (in)	Mount Constant (lbs/in)	Spring Color/Stripe
SLFH-A-45	45	1.60	28	Blue
SLFH-A-75	75	1.50	50	Orange
SLFH-A-125	125	1.33	94	Brown
SLFH-A-200	200	1.15	174	Black
SLFH-A-310	310	1.00	310	Yellow
SLFH-A-400	400	1.00	400	Green
SLFH-A-510	510	1.00	510	Red
SLFH-A-625	625	1.00	625	White
SLFH-B-65	65	2.10	31	Brown
SLFH-B-85	85	2.10	40	White/Black
SLFH-B-115	115	2.00	57	Silver
SLFH-B-150	150	2.00	75	Orange
SLFH-B-280	280	1.60	174	Green
SLFH-B-450	450	1.31	344	Red
SLFH-B-750	750	1.12	670	White
SLFH-B-1000	1000	1.00	1000	Blue
SLFH-C-1000	1000	1.00	1000	Black
SLFH-C-1350	1350	1.00	1350	Yellow
SLFH-C-1750	1750	1.00	1750	Black*
SLFH-C-2100	2100	1.00	2100	Yellow*
SLFH-C-2385	2385	1.00	2385	Yellow**
SLFH-C-2650	2650	1.00	2650	Red*
SLFH-C-2935	2935	1.00	2935	Red**
SLFH-2-2700	2700	1.00	2700	Yellow
SLFH-2-3500	3500	1.00	3500	Black
SLFH-2-4200	4200	1.00	4200	Yellow*
SLFH-2-4770	4770	1.00	4770	Yellow**

* with RED core spring ** with GREEN core spring
 All springs have additional travel to solid equal to 50% of the Rated Deflection. Solid Spring Height = Free Height minus 1.5 times the Rated Deflection.

TYPE SLFH DIMENSIONS (inches)

Size	Free & Oper. Height	A	B	C	Locking Cap Screw
SLFH-A-45-400 [♦]	4 1/4	2 1/4	3	3 5/8	3/8 x 1
SLFH-A-510-625	4 5/8	2 1/4	3	3 5/8	3/8 x 1
SLFH-B	6	2 3/4	4 1/8	5 1/4	1/2 x 1 1/4
SLFH-C	6	3	4 3/4	6	1/2 x 1 1/4
SLFH-2	-	-	-	-	1/2 x 1 1/4

♦ If using 45 thru 400 with 510 or 625, Free & Operating Height is 4 5/8".

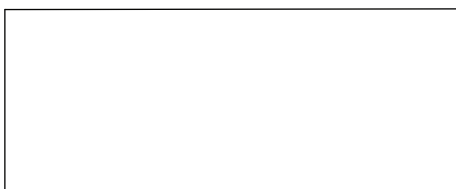
SPRING DATA

Spring OD	Free HT	Ratio K _x /K _y	Ratio OD/OH
1 3/4	3	0.70-0.90	0.88-1.25
1 3/4	31/8-33/8	0.50-0.60	0.74-0.82
2 3/8	4	0.70-0.90	0.80-1.25
2 3/8	4 1/8	0.90-1.00	0.92-0.94
2 7/8	4 1/8	0.90-1.00	0.92-0.94

Multiple spring Mounts have C-size springs.
 SLFH-2 indicates 2 springs.

PLAN VIEW OF MOUNT LOCATIONS

TAG : _____
 UNIT : _____



_____ inch SPECIFIED DEFLECTION

1 :	6 :
2 :	7 :
3 :	8 :
4 :	9 :
5 :	10 :

Material for One Set : _____ Sets Required



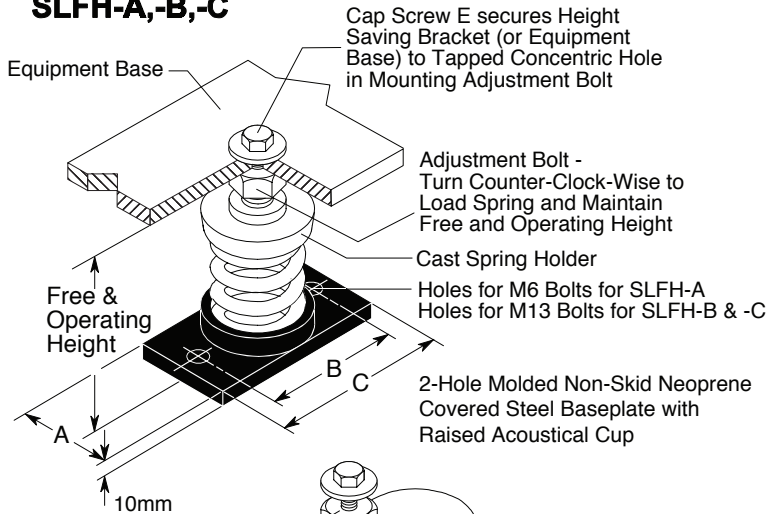
MASON INDUSTRIES, Inc.

Manufacturers of Vibration Control Products
 350 Rabro Drive 2101 W. Crescent Ave., Suite D
 Hauppauge, NY 11788 Anaheim, CA 92801
 631/348-0282 714/535-2727
 FAX 631/348-0279 FAX 714/535-5738
 Info@Mason-Ind.com Info@MasonAnaheim.com
 www.Mason-Ind.com

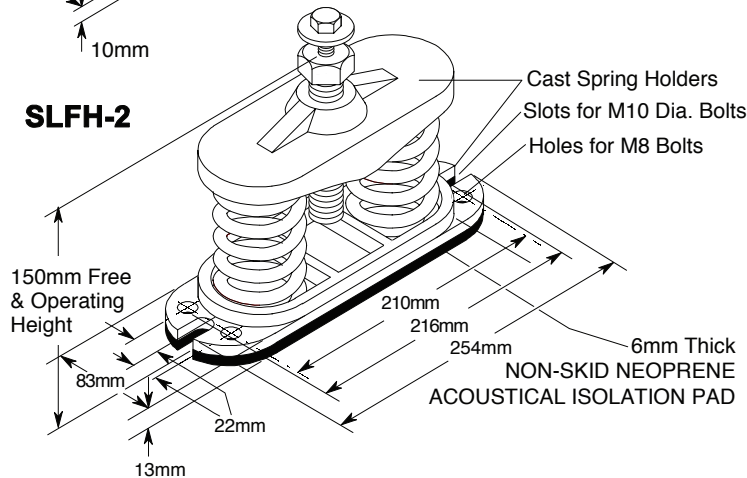
JOB NAME _____
 CUSTOMER _____
 CUSTOMER P.O. _____
 MASON M.I. _____
 DWG. NO. _____

TYPE
SLFH
 25mm Deflection
 A, B, C & 2
 Series Mountings

SLFH-A,-B,-C



SLFH-2



TYPE SLFH RATINGS

Size	Rated Capacity (kg)	Rated Defl. (mm)	Mount Constant (kg/mm)	Spring Color/Stripe
SLFH-A-45	20	41	0.5	Blue
SLFH-A-75	34	38	0.9	Orange
SLFH-A-125	57	34	1.7	Brown
SLFH-A-200	91	29	3.1	Black
SLFH-A-310	141	25	5.5	Yellow
SLFH-A-400	181	25	7.1	Green
SLFH-A-510	231	25	9.1	Red
SLFH-A-625	283	25	11.2	White
SLFH-B-65	29	53	0.6	Brown
SLFH-B-85	39	53	0.7	White/Black
SLFH-B-115	52	51	1.0	Silver
SLFH-B-150	68	51	1.3	Orange
SLFH-B-280	127	41	3.1	Green
SLFH-B-450	204	33	6.1	Red
SLFH-B-750	340	28	12.0	White
SLFH-B-1000	454	25	17.9	Blue
SLFH-C-1000	454	25	17.9	Black
SLFH-C-1350	612	25	24.1	Yellow
SLFH-C-1750	794	25	31.3	Black*
SLFH-C-2100	953	25	37.5	Yellow*
SLFH-C-2385	1082	25	42.6	Yellow**
SLFH-C-2650	1202	25	47.3	Red*
SLFH-C-2935	1331	25	52.4	Red**
SLFH-2-2700	1225	25	48.2	Yellow
SLFH-2-3500	1588	25	62.5	Black
SLFH-2-4200	1905	25	75.0	Yellow*
SLFH-2-4770	2164	25	85.2	Yellow**

* with RED core spring ** with GREEN core spring
 All springs have additional travel to solid equal to 50% of the Rated Deflection. Solid Spring Height = Free Height minus 1.5 times the Rated Deflection.

TYPE SLFH DIMENSIONS

Size	Free & Oper. Height	A	B	C	Locking Cap Screw
SLFH-A-45-400 [♦]	108	57	76	92	3/8 x 1
SLFH-A-510-625	117	57	76	92	3/8 x 1
SLFH-B	150	70	105	133	1/2 x 1 1/4
SLFH-C	150	76	121	152	1/2 x 1 1/4
SLFH-2	-	-	-	-	1/2 x 1 1/4

♦ If using 45 thru 400 with 510 or 625, Free & Operating Height is 118.

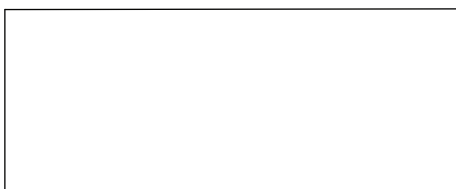
SPRING DATA

Spring OD	Free HT	Ratio K _x /K _y	Ratio OD/OH
45	76	0.70-0.90	0.88-1.25
45	79-86	0.50-0.60	0.74-0.82
60	102	0.70-0.90	0.80-1.25
60	105	0.90-1.00	0.92-0.94
73	105	0.90-1.00	0.92-0.94

Multiple spring Mounts have C-size springs.
 SLFH-2 indicates 2 springs.

PLAN VIEW OF MOUNT LOCATIONS

TAG : _____
 UNIT : _____



_____ inch SPECIFIED DEFLECTION

1 :	6 :
2 :	7 :
3 :	8 :
4 :	9 :
5 :	10 :

Material for One Set : _____ Sets Required



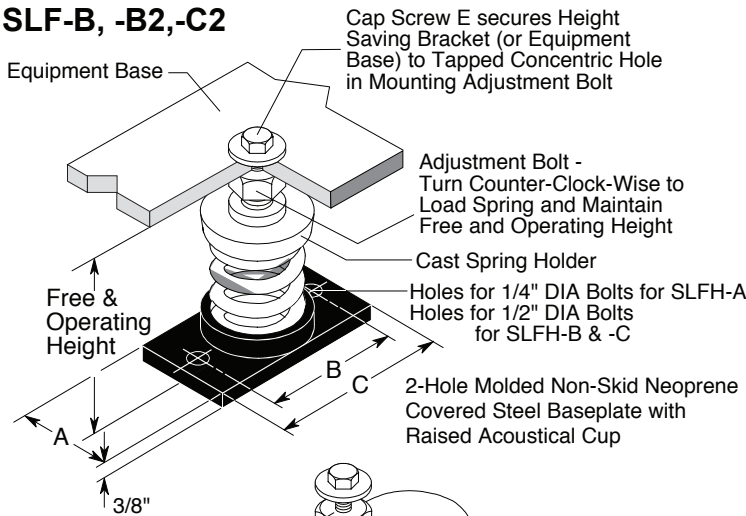
MASON INDUSTRIES, Inc.

Manufacturers of Vibration Control Products
 350 Rabro Drive 2101 W. Crescent Ave., Suite D
 Hauppauge, NY 11788 Anaheim, CA 92801
 631/348-0282 714/535-2727
 FAX 631/348-0279 FAX 714/535-5738
 Info@Mason-Ind.com Info@MasonAnaheim.com
 www.Mason-Ind.com

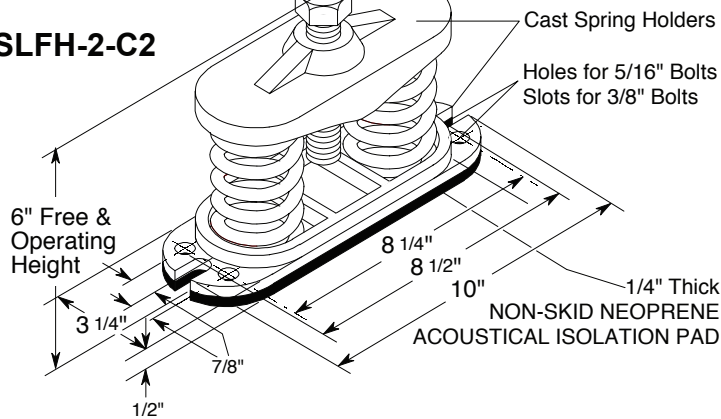
JOB NAME _____
 CUSTOMER _____
 CUSTOMER P.O. _____
 MASON M.I. _____
 DWG. NO. _____

TYPE
SLFH
 2" DEFLECTION
 B, B2, C2 & 2-C2
 SERIES MOUNTS

SLF-B, -B2, -C2



SLFH-2-C2



TYPE SLFH RATINGS

Size	Standard Ratings			Color/Stripe	Ratings at 50% additional travel to solid	
	Rated Capacity (lbs)	Rated Defl (in)	Mount Constant (lbs/in)		Capacity (lbs)	Defl (in)
SLFH-B-20	20	2.40	8	Tan	20	2.40
SLFH-B-26	26	2.18	12	White/Blue	26	2.18
SLFH-B-35	35	2.20	16	Purple	35	2.20
SLFH-B-50	50	2.20	24	White/Red	50	2.20
SLFH-B-65	65	2.10	31	Brown	65	2.10
SLFH-B-85	85	2.10	40	White/Black	85	2.10
SLFH-B-115	115	2.00	57	Silver	115	2.00
SLFH-B-150	150	2.00	75	Orange	150	2.00
SLFH-B2-210	210	2.12	99	Silver	210	2.12
SLFH-B2-290	290	2.00	144	Blue	290	2.00
SLFH-B2-450	450	2.00	224	Tan	410	1.83
SLFH-B2-680	680	2.00	340	Gray	565	1.66
SLFH-C2-125	125	2.50	50	Purple	125	2.50
SLFH-C2-170	170	2.40	70	Brown	170	2.40
SLFH-C2-210	210	2.30	90	Red	210	2.30
SLFH-C2-260	260	2.20	120	White	260	2.20
SLFH-C2-330	330	2.00	165	Black	330	2.00
SLFH-C2-460	460	2.00	230	Blue	460	2.00
SLFH-C2-610	610	2.00	305	Green	610	2.00
SLFH-C2-880	880	2.00	440	Gray	800	1.82
SLFH-C2-1210	1210	2.00	605	Silver	1010	1.67
SLFH-C2-1540	1540	2.00	770	Gray*	1285	1.67
SLFH-C2-1870	1870	2.00	935	Silver*	1560	1.67
SLFH-2-C2-340	340	2.40	140	Brown	340	2.40
SLFH-2-C2-420	420	2.30	180	Red	420	2.30
SLFH-2-C2-520	520	2.20	240	White	520	2.20
SLFH-2-C2-660	660	2.00	330	Black	660	2.00
SLFH-2-C2-920	920	2.00	460	Blue	920	2.00
SLFH-2-C2-1220	1220	2.00	610	Green	1220	2.00
SLFH-2-C2-1760	1760	2.00	880	Gray	1600	1.82
SLFH-2-C2-2420	2420	2.00	1210	Silver	2020	1.67
SLFH-2-C2-3080	3080	2.00	1540	Gray*	2570	1.67
SLFH-2-C2-3740	3740	2.00	1870	Silver*	3120	1.67

*with RED spring inside

SLFH-B2-450, B2-680, C2-880 thru C2-1870 & 2-C2-1760 thru 2-C2-3740 mounts have minimum 25% of rated deflection additional travel to solid. The last two columns show ratings at 50% additional travel.

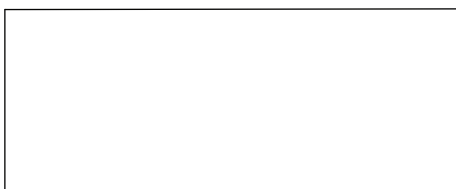
TYPE SLFH DIMENSIONS (inches)

Size	Free & Oper Height	A	B	C	Locking Cap Screw E	SPRING DATA			
						Spring OD	Free HT.	Ratio Kx/Ky	Ratio OD/OH
SLFH-B & B2	6 3/4	2 3/4	4 1/8	5 1/4	1/2x1 1/4	2 3/4	4-4 1/2	0.55-0.90	0.79-1.18
SLFH-C2	6 3/4	3	4 3/4	6	1/2x1 1/4	2 7/8	5	0.63-0.85	0.96-1.15
SLFH-2-C2	6 3/4	—	—	—	1/2x1 1/4	2 7/8	5	0.63-0.85	0.96-1.15

Multiple spring mounts have C size springs. SLFH-2 indicates 2 springs.

PLAN VIEW OF MOUNT LOCATIONS

TAG : _____
 UNIT : _____



_____ inch SPECIFIED DEFLECTION

1 :	6 :
2 :	7 :
3 :	8 :
4 :	9 :
5 :	10 :

Material for One Set : _____ Sets Required



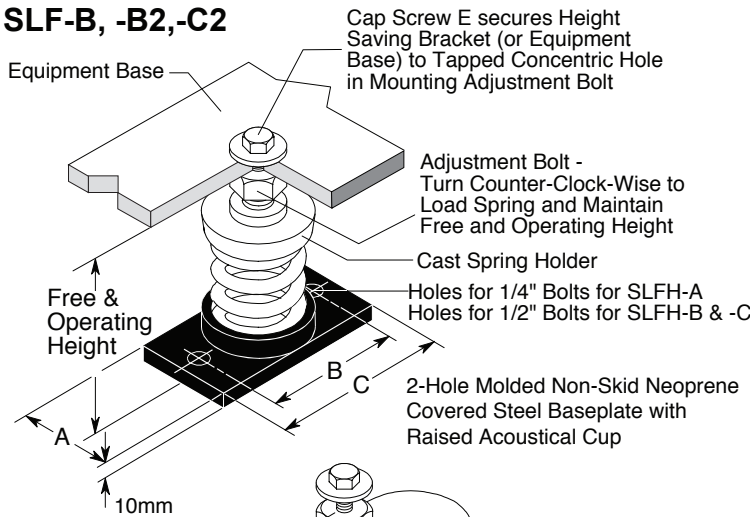
MASON INDUSTRIES, Inc.

Manufacturers of Vibration Control Products
 350 Rabro Drive 2101 W. Crescent Ave., Suite D
 Hauppauge, NY 11788 Anaheim, CA 92801
 631/348-0282 714/535-2727
 FAX 631/348-0279 FAX 714/535-5738
 Info@Mason-Ind.com Info@MasonAnaheim.com
 www.Mason-Ind.com

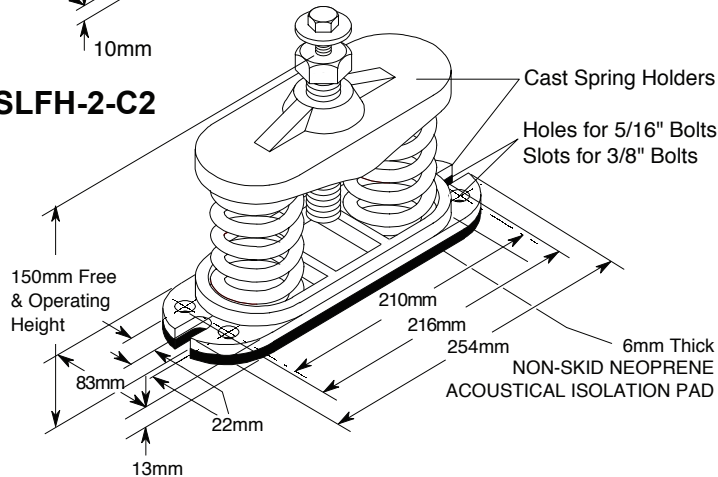
JOB NAME _____
 CUSTOMER _____
 CUSTOMER P.O. _____
 MASON M.I. _____
 DWG. NO. _____

TYPE
SLFH
 50mm DEFLECTION
 B, B2, C2 & 2-C2
 SERIES MOUNTS

SLFH-B, -B2,-C2



SLFH-2-C2



TYPE SLFH RATINGS

Size	Standard Ratings				Ratings at 50% additional travel to solid	
	Rated Capacity (kg)	Rated Defl (mm)	Mount Constant (kg/mm)	Spring Color/Stripe	Capacity (kg)	Defl (mm)
SLFH-B-20	9	61	0.2	Tan	9	61
SLFH-B-26	12	55	0.2	White/Blue	12	55
SLFH-B-35	16	56	0.3	Purple	16	56
SLFH-B-50	23	56	0.4	White/Red	23	56
SLFH-B-65	29	53	0.5	Brown	29	53
SLFH-B-85	39	53	0.7	White/Black	39	53
SLFH-B-115	52	50	1.0	Silver	52	50
SLFH-B-150	68	50	1.4	Orange	68	50
SLFH-B2-210	95	53	1.8	Silver	95	53
SLFH-B2-290	131	50	2.6	Blue	131	50
SLFH-B2-450	204	50	4.0	Tan	186	46
SLFH-B2-680	308	50	6.0	Gray	256	42
SLFH-C2-125	57	64	0.9	Purple	57	64
SLFH-C2-170	77	61	1.3	Brown	77	61
SLFH-C2-210	95	58	1.6	Red	95	58
SLFH-C2-260	118	56	2.1	White	118	56
SLFH-C2-330	149	50	2.9	Black	149	50
SLFH-C2-460	208	50	4.1	Blue	208	50
SLFH-C2-610	276	50	5.5	Green	276	50
SLFH-C2-880	399	50	8.0	Gray	362	46
SLFH-C2-1210	548	50	11.0	Silver	457	42
SLFH-C2-1540	698	50	14.0	Gray	582	42
SLFH-C2-1870	847	50	17.0	Silver	706	42
SLFH-2-C2-340	170	61	2.5	Brown	154	61
SLFH-2-C2-420	190	58	3.3	Red	190	58
SLFH-2-C2-520	236	56	4.2	White	236	56
SLFH-2-C2-660	298	50	5.9	Black	299	50
SLFH-2-C2-920	416	50	8.3	Blue	417	50
SLFH-2-C2-1220	552	50	11.0	Green	552	50
SLFH-2-C2-1760	798	50	16.0	Gray	725	46
SLFH-2-C2-2420	1096	50	22.0	Silver	915	42
SLFH-2-C2-3080	1396	50	28.0	Gray	1164	42
SLFH-2-C2-3740	1694	50	34.0	Silver	1413	42

* with RED core spring

SLFH-B2-450, B2-680, C2-880 thru C2-1870 & 2-C2-1760 thru 2-C2-3740 mounts have minimum 25% of rated deflection additional travel to solid. The last two columns show ratings at 50% additional travel.

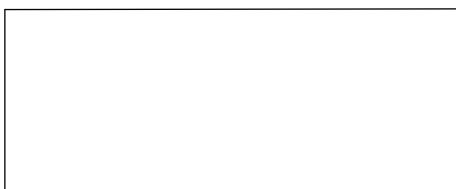
TYPE SLFH DIMENSIONS

Size	Free & Oper Height	Locking Cap Screw E			SPRING DATA				
		A	B	C	Spring OD	Free HT.	Ratio Kx/Ky	Ratio OD/OH	
SLFH-B & B2	171	70	105	133	1/2"x1 1/4"	70	102-114	0.55-0.90	0.79-1.18
SLFH-C2	171	76	121	150	1/2"x1 1/4"	73	127	0.63-0.85	0.96-1.15
SLFH-2-C2	171	—	—	—	1/2"x1 1/4"	73	127	0.63-0.85	0.96-1.15

Multiple spring mounts have C size springs. SLFH-2 indicates 2 springs.

PLAN VIEW OF MOUNT LOCATIONS

TAG : _____
 UNIT : _____



_____ inch SPECIFIED DEFLECTION

1 :	6 :
2 :	7 :
3 :	8 :
4 :	9 :
5 :	10 :

Material for One Set : _____ Sets Required



MASON INDUSTRIES, Inc.

Manufacturers of Vibration Control Products

350 Rabro Drive
Hauppauge, NY 11788
631/348-0282
FAX 631/348-0279

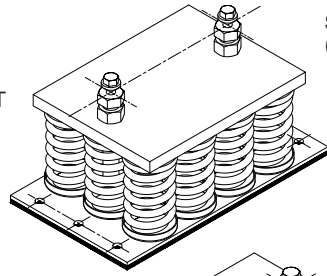
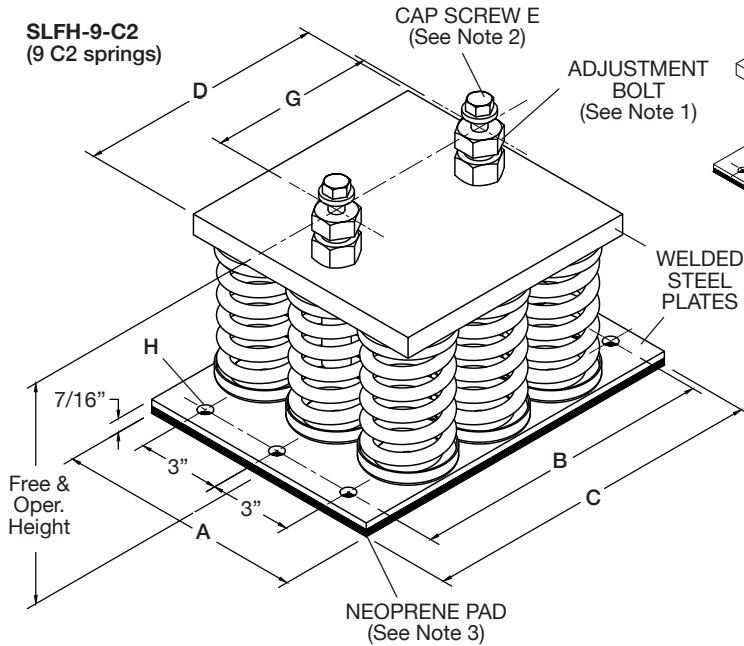
2101 W. Crescent Ave., Suite D
Anaheim, CA 92801
714/535-2727
FAX 714/535-5738

Info@Mason-Ind.com • www.Mason-Ind.com

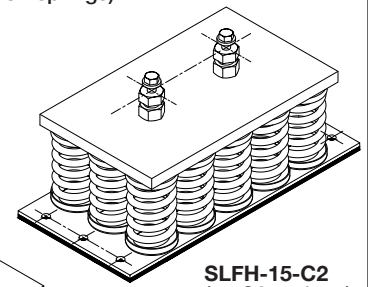
JOB NAME _____
CUSTOMER _____
CUSTOMER P.O. _____
MASON M. _____
DWG No. _____

SLFH

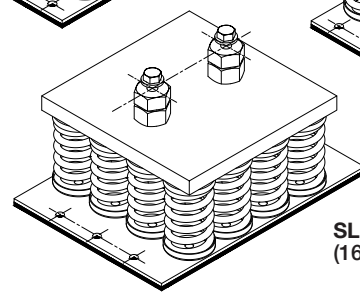
UNHOUSED FREE
STANDING MOUNTS
2" (51mm) Deflection
Sizes 9-C2, 12-C2,
15-C2 & 16-C2



SLFH-12-C2
(12 C2 springs)



SLFH-15-C2
(15 C2 springs)



SLFH-16-C2
(16 C2 springs)

SPRING DATA (inches and mm)

Spring Size	OD	Free Height	Ratio Kx/Ky	Ratio OD/OH
C2	27/8	73	5 127	0.63-0.85 0.96-1.15

- NOTE 1- Turn bolts equally counterclockwise to load springs and maintain Free and Operating Height.
NOTE 2- Cap Screws secure Height-Saving Bracket (or Equipment Base) to Tapped Concentric Hole in Mounting Adjustment Bolts.
NOTE 3- Non-Skid Neoprene Acoustical Isolation Pad.

TYPE SLFH DIMENSIONS (inches and mm)

Type & Size	Free & Oper Ht	A	B	C	D	Locking Cap Screw E	G	Hole Max Bolt Diam	H
SLFH-9-C2	8 203	9 229	11 279	12 1/2 318	9 229	1/2 x 1 1/4	6 152	1/2 13	13
SLFH-12-C2	8 203	9 229	14 356	15 1/2 394	12 305	1/2 x 1 1/4	9 229	1/2 13	13
SLFH-15-C2	8 203	9 229	17 432	18 1/2 470	15 381	1/2 x 1 1/4	6 152	1/2 13	13
SLFH-16-C2	8 1/2 216	12 305	14 356	15 1/2 394	12 305	5/8 x 1 1/4	6 152	1/2 13	13

TYPE SLFH RATINGS 2" 51mm Deflection Series

SLFH Size	Rated Capacity (lbs) (kg)	Rated Defl (in) (mm)	Mount Constant (lbs/in)(kg/mm)	Spring Color
9-C2-10890	10890 4940	2.00 51	5445 99	Silver
9-C2-13860	13860 6287	2.00 51	6930 126	Gray*
9-C2-16830	16830 7634	2.00 51	8415 153	Silver*
12-C2-18480	18480 8382	2.00 51	9240 168	Gray*
12-C2-22440	22440 10179	2.00 51	11220 204	Silver*
15-C2-23100	23100 10478	2.00 51	11550 210	Gray*
16-C2-24640	24640 11177	2.00 51	12320 224	Gray*
16-C2-29920	29920 13572	2.00 51	14960 272	Silver*

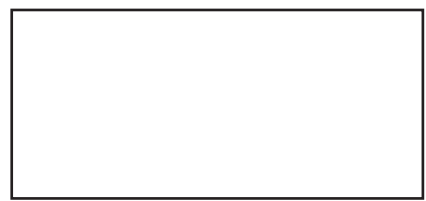
*with RED inner spring

Published ratings allow minimum 25% additional travel to solid. For a full 50% specified minimum use the following ratings:

Size	50% Travel to Solid Capacity		Defl. (in)(mm)	Size	50% Travel to Solid Capacity		Defl. (in)(mm)
	(lbs)	(kg)			(lbs)	(kg)	
9-C2-10890	9093	4125	1.67 42	12-C2-22440	18737	8499	1.67 42
9-C2-13860	11570	5248	1.67 42	15-C2-23100	19289	8749	1.67 42
9-C2-16830	14053	6374	1.67 42	16-C2-24640	20574	9332	1.67 42
12-C2-18480	15430	6999	1.67 42	16-C2-29920	24983	11332	1.67 42

PLAN VIEW OF MOUNT LOCATIONS

TAG: _____
UNIT: _____



SPECIFIED DEFLECTION

1:	6:
2:	7:
3:	8:
4:	9:
5:	10:
Sets Required:	